



SZABO SCANDIC

Part of Europa Biosite

Produktinformation



Forschungsprodukte & Biochemikalien



Zellkultur & Verbrauchsmaterial



Diagnostik & molekulare Diagnostik



Laborgeräte & Service

Weitere Information auf den folgenden Seiten!
See the following pages for more information!



Lieferung & Zahlungsart

siehe unsere [Liefer- und Versandbedingungen](#)

Zuschläge

- Mindermengenzuschlag
- Trockeneiszuschlag
- Gefahrgutzuschlag
- Expressversand

SZABO-SCANDIC HandelsgmbH

Quellenstraße 110, A-1100 Wien

T. +43(0)1 489 3961-0

F. +43(0)1 489 3961-7

mail@szabo-scandic.com

www.szabo-scandic.com

[linkedin.com/company/szaboscandic](https://www.linkedin.com/company/szaboscandic) 

Data Sheet

PCAF (720-end)

Human, recombinant, N-terminal His- tag
 Catalog #: 31120
 Lot#: 120710-G Conc.: 0.96 mg/ml

Formulated in: 45 mM Tris-HCl, pH 8.0, 124 mM NaCl, 2.4 mM KCl, and 10% glycerol.

Stability: >6 months at -80°C

References:

1. Zeng, L., *et al.*, *Structure* 2008 Apr;**16(4)**:643-52.
2. Kanno, T., *et al.*, *Mol. Cell.* 2004 Jan 16;**13(1)**:33-43.

Description:

Human bromodomain p300/CREB binding protein associated factor (pCAF), also known as KAT2B, GenBank Accession No. NM_003884, a.a. 720-832 (end), with N-terminal His-tag, MW=14.5 kDa, expressed in an *E. coli* expression system.

Application:

Useful for the study of enzyme kinetics, screening inhibitors, and selectivity profiling.

Quality Assurance

**4-20% SDS-PAGE
 Coomassie staining**

Lane 1:

5 µg PCAF

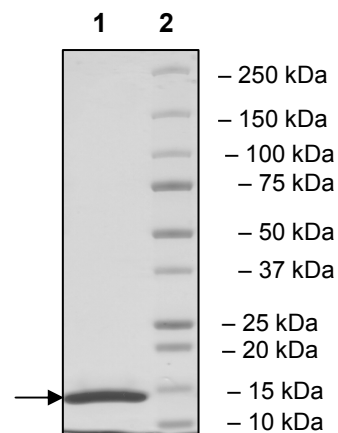
Lane 2:

Protein Marker

Biorad (#161-0373)

MW: 14.5 kDa

Purity: ≥99%



Protein Sequence:

**MHHHHHHHKEPRDPDQLYSTLKSILQQVKSHQSAWPFMEPVKRTEAPGYEIVIRFPMD
 LKTMSERLKNRYVSKKLFMADLQRVFTNCKEYNPPSEYYKCANILEKFFFSKIKEA
 GLIDK**

OUR PRODUCTS ARE FOR RESEARCH USE ONLY. NOT FOR DIAGNOSTIC OR THERAPEUTIC USE.

To place your order, please contact us by Phone **1.858.829.3082** Fax **1.858.481.8694**

Or you can Email us at: info@bpsbioscience.com

Please visit our website at: www.bpsbioscience.com