



# SZABO SCANDIC

Part of Europa Biosite

## Produktinformation



Forschungsprodukte & Biochemikalien



Zellkultur & Verbrauchsmaterial



Diagnostik & molekulare Diagnostik



Laborgeräte & Service

Weitere Information auf den folgenden Seiten!  
See the following pages for more information!



### Lieferung & Zahlungsart

siehe unsere [Liefer- und Versandbedingungen](#)

### Zuschläge

- Mindermengenzuschlag
- Trockeneiszuschlag
- Gefahrgutzuschlag
- Expressversand

### SZABO-SCANDIC HandelsgmbH

Quellenstraße 110, A-1100 Wien

T. +43(0)1 489 3961-0

F. +43(0)1 489 3961-7

[mail@szabo-scandic.com](mailto:mail@szabo-scandic.com)

[www.szabo-scandic.com](http://www.szabo-scandic.com)

[linkedin.com/company/szaboscandic](https://www.linkedin.com/company/szaboscandic) 

## Data Sheet

### ATAD2A (981-1108)

Human, recombinant, N-terminal GST-tag

**Catalog #:** 31121

**Lot #:** 120718-G1      **Conc.:** 2.67 mg/ml

**Formulated in:** 45 mM Tris-HCl, pH 8.0, 124 mM NaCl, 2.4 mM KCl, and 10% glycerol.

**Stability:** >6 months at -80 °C

#### References:

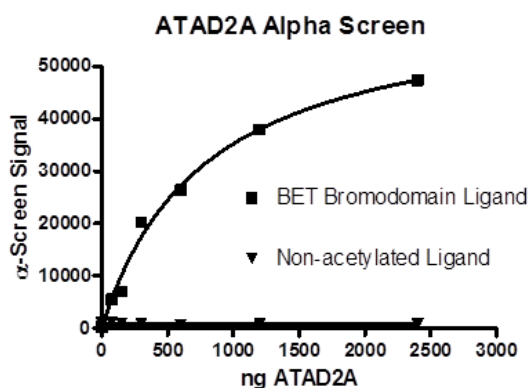
1. Caron C, *et al.*, *Oncogene*. 2010 Sep 16; **29(37)**:5171-81.
2. Kalashnikova EV, *et al.*, *Cancer Res*. 2010 Nov 15; **70(22)**:9402-12.

**Description:** Human Bromodomain ATAD2A, amino-acids 981 – 1108 (GenBank Accession No. NM\_014109) with N-terminal GST-tag, MW = 42 kDa, expressed in an *E. coli* expression system.

**Assay Conditions:** Assay was performed using ATAD2A Inhibitor Screening Assay Kit, Cat. #32601. ATAD2A protein is incubated with biotinylated acetyl-histone peptide substrate (Cat. #33000) in ATAD2A assay buffer in a 10 ul reaction for 1 hour at RT. AlphaLISA® GSH acceptor beads (Perkin Elmer) were then added, and the mixture was incubated for 30 minutes at room temperature (RT). AlphaScreen® Streptavidin-conjugated donor beads (Perkin Elmer) were then added. After 10 minute incubation at RT, Alphacounts are measured.

**Application:** Useful for the study of bromodomain binding assays, screening inhibitors, and selectivity profiling.

## Quality Assurance

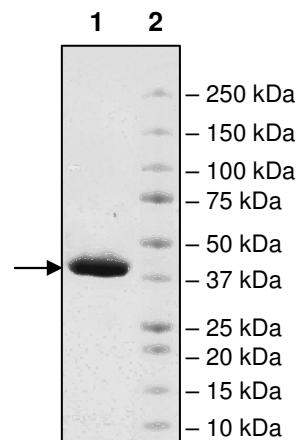


#### 4-20% SDS-PAGE Coomassie staining

**Lane 1:**  
5 µg ATAD2A

**Lane 2:**  
Protein Marker  
Biorad (#161-0373)

**MW:** 42 kDa  
**Purity:** ≥95%



OUR PRODUCTS ARE FOR RESEARCH USE ONLY. NOT FOR DIAGNOSTIC OR THERAPEUTIC USE.

To place your order, please contact us by Phone **1.858.829.3082** Fax **1.858.481.8694**  
 Or you can Email us at: [info@bpsbioscience.com](mailto:info@bpsbioscience.com)  
 Please visit our website at: [www.bpsbioscience.com](http://www.bpsbioscience.com)



6044 Cornerstone Court West, Suite E  
San Diego, CA 92121  
Tel: 1.858.829.3082  
Fax: 1.858.481.8694  
Email: [info@bpsbioscience.com](mailto:info@bpsbioscience.com)

**Protein Sequence:**

MSPILGYWKIKGLVQPTRLLEYLEEKYEEHLYERDEGDKWRNKKFELGLEFPNLPYYI  
DGDVKLTQSMAIRYIADKHNMLGGCPKERAEISMLEGAVLDIRYGVSRIAYSKDFETLK  
VDFLSKLPPEMLKMFEDRLCHKTYLNGDHVTHPDFMLYDALDVVLYMDPMCLDAFPKLV  
CFKKRIEAIQIDKYLKSSKYIAWPLQGQATFGGGDHPPKSDLEVLFGGPLGSQEEDT  
FRELRIFLRNVTHRLAIDKRFRVFTKPVDPDEVDPDYVTVIKQPMDLSSVISKIDLHKYLT  
VKDYLRDIDLICSNALEYNPDRDPGDRLIRHRACALRDTAYAIKEELDEDFEQLCEEIQ  
ESR

OUR PRODUCTS ARE FOR RESEARCH USE ONLY. NOT FOR DIAGNOSTIC OR THERAPEUTIC USE.

To place your order, please contact us by Phone **1.858.829.3082** Fax **1.858.481.8694**  
Or you can Email us at: [info@bpsbioscience.com](mailto:info@bpsbioscience.com)  
Please visit our website at: [www.bpsbioscience.com](http://www.bpsbioscience.com)