



# SZABO SCANDIC

Part of Europa Biosite

## Produktinformation



Forschungsprodukte & Biochemikalien



Zellkultur & Verbrauchsmaterial



Diagnostik & molekulare Diagnostik



Laborgeräte & Service

Weitere Information auf den folgenden Seiten!  
See the following pages for more information!



### Lieferung & Zahlungsart

siehe unsere [Liefer- und Versandbedingungen](#)

### Zuschläge

- Mindermengenzuschlag
- Trockeneiszuschlag
- Gefahrgutzuschlag
- Expressversand

### SZABO-SCANDIC HandelsgmbH

Quellenstraße 110, A-1100 Wien

T. +43(0)1 489 3961-0

F. +43(0)1 489 3961-7

[mail@szabo-scandic.com](mailto:mail@szabo-scandic.com)

[www.szabo-scandic.com](http://www.szabo-scandic.com)

[linkedin.com/company/szaboscandic](https://www.linkedin.com/company/szaboscandic) 

## Data Sheet

### TAF1, BD1 and BD2 (1400-1651)

Human, recombinant, N-terminal GST-tag  
**Catalog #:** 31124  
**Lot #:** 120823-D      **Conc.:** 1.79 mg/ml

**Formulated in:** 40 mM Tris-HCl, pH 8.0,  
 110 mM NaCl, 2.2 mM KCl, and 20%  
 glycerol.

**Stability:** >6 months at -80 °C

**References:**

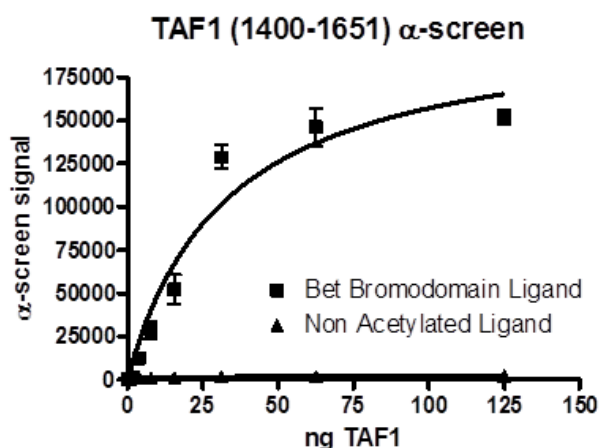
1. Sako W, *et al.*, *Neuroscience*. 2011 Aug 25;**189**:100-7.
2. Zaborowska J, *et al.*, *Transcription*. 2012 Mar 1;**3(2)**:92-104.

**Description:** Human Bromodomain TAF1, amino-acids 1400 – 1651 (GenBank Accession No. NM\_004606) with N-terminal GST-tag, MW = 56.1 kDa, expressed in an *E. coli* expression system.

**Assay Conditions:** Assay was performed using TAF1 (BD1+ BD2) Inhibitor Screening Assay Kit (Cat# 32604). TAF1 protein is incubated with biotinylated acetyl-histone peptide substrate (Cat. #33000) in TAF1 assay buffer in a 10 µl reaction for 1 hour at RT. AlphaLISA® GSH acceptor beads (PerkinElmer) were then added, and the mixture was incubated for 30 minutes at room temperature (RT). AlphaScreen® Streptavidin-conjugated donor beads (PerkinElmer) were then added. After 10 minute incubation at RT, Alphacounts are measured.

**Application:** Useful for the study of bromodomain binding assays, screening inhibitors, and selectivity profiling.

## Quality Assurance

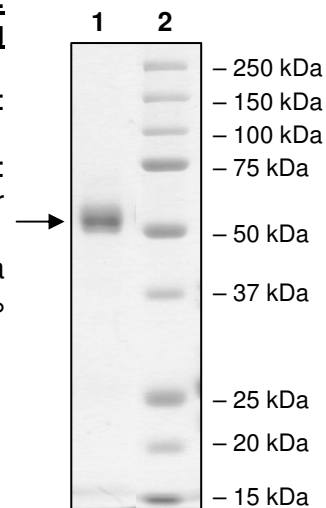


**10% SDS-PAGE  
Coomassie staining**

**Lane 1:**  
0.72 µg TAF1

**Lane 2:**  
Protein Marker

**MW:** 56.1 kDa  
**Purity:** ≥95%



OUR PRODUCTS ARE FOR RESEARCH USE ONLY. NOT FOR DIAGNOSTIC OR THERAPEUTIC USE.

To place your order, please contact us by Phone **1.858.829.3082** Fax **1.858.481.8694**  
 Or you can Email us at: [info@bpsbioscience.com](mailto:info@bpsbioscience.com)  
 Please visit our website at: [www.bpsbioscience.com](http://www.bpsbioscience.com)



6044 Cornerstone Court West, Suite E  
San Diego, CA 92121  
Tel: 1.858.829.3082  
Fax: 1.858.481.8694  
Email: [info@bpsbioscience.com](mailto:info@bpsbioscience.com)

**Protein Sequence:**

TDPMVTLSSILESIIINDMRDLPNTYPFHTPVNAKVVKDYYKIITRPMDLQTLRENVKRL  
YPSREEFHLELIVKNSATYNGPKHSLTQISQSMLDLCDEKLKEKEDKLARLEKAIN  
PLLDDDDQVAFSFLDNIVTQKMMAVPDSWPFHHPVNKKFVPDYKVVNPNMDLETIR  
KNISKHKYQSRESFLDDVNLILANSVKYNGPESQYTKTAQEIVNVCYQTLTEYDEHLT  
QLEKDICTAKEAALEEAE

OUR PRODUCTS ARE FOR RESEARCH USE ONLY. NOT FOR DIAGNOSTIC OR THERAPEUTIC USE.

To place your order, please contact us by Phone **1.858.829.3082** Fax **1.858.481.8694**  
Or you can Email us at: [info@bpsbioscience.com](mailto:info@bpsbioscience.com)  
Please visit our website at: [www.bpsbioscience.com](http://www.bpsbioscience.com)