



SZABO SCANDIC

Part of Europa Biosite

Produktinformation



Forschungsprodukte & Biochemikalien



Zellkultur & Verbrauchsmaterial



Diagnostik & molekulare Diagnostik



Laborgeräte & Service

Weitere Information auf den folgenden Seiten!
See the following pages for more information!



Lieferung & Zahlungsart

siehe unsere [Liefer- und Versandbedingungen](#)

Zuschläge

- Mindermengenzuschlag
- Trockeneiszuschlag
- Gefahrgutzuschlag
- Expressversand

SZABO-SCANDIC HandelsgmbH

Quellenstraße 110, A-1100 Wien

T. +43(0)1 489 3961-0

F. +43(0)1 489 3961-7

mail@szabo-scandic.com

www.szabo-scandic.com

[linkedin.com/company/szaboscandic](https://www.linkedin.com/company/szaboscandic) 

Data Sheet

ATAD2B (953 – 1080)

Human, recombinant, N-terminal GST-tag
Catalog #: 31125
 Lot #: 120918-D Conc.: 1.9 mg/ml

Formulated in: 40 mM Tris, 110 mM NaCl, 2.2 mM KCl, and 20% glycerol.

Stability: >6 months at -80°C

References:

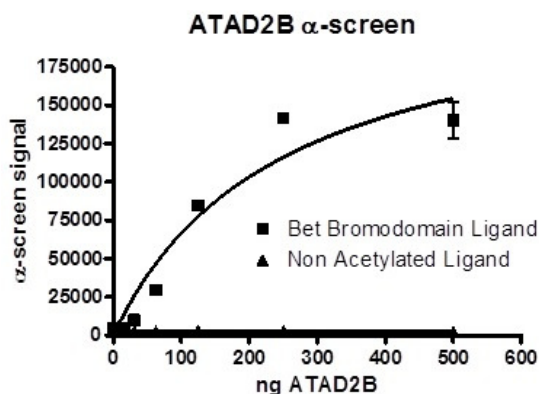
1. Leachman, N.T., *et al.*, *Dev Growth Differ.* 2010 Dec; **52(9)**:747-55.
2. Ota, T., *et al.*, *Nat Genet.* 2004 Jan; **36(1)**:40-5.

Description: Human bromodomain ATPase family, AAA domain containing 2B (variant 1), amino-acids 953 - 1080, (GenBank Accession No. NM_017552) with N-terminal GST-tag, MW = 42 kDa, expressed in an *E. coli* expression system.

Assay Conditions: Assay was performed using ATAD2B Inhibitor Screening Assay Kit, Cat. #32605. ATAD2B protein is incubated with biotinylated acetyl-histone peptide substrate (Cat. #33000) in ATAD2B assay buffer in a 10 µl reaction for 1 hour at RT. AlphaLISA® GSH acceptor beads (Perkin Elmer) were then added, and the mixture was incubated for 30 minutes at room temperature (RT). AlphaScreen® Streptavidin-conjugated donor beads (Perkin Elmer) were then added. After 10 minute incubation at RT, Alphacounts are measured.

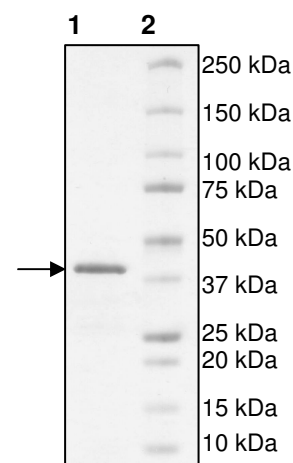
Application: Useful for the study of bromodomain binding assays, screening inhibitors, and selectivity profiling.

Quality Assurance



4-20% SDS-PAGE
Coomassie staining

Lane 1:
2 µg ATAD2B
Lane 2:
Protein Marker
MW: 42 kDa
Purity: ≥95%



OUR PRODUCTS ARE FOR RESEARCH USE ONLY. NOT FOR DIAGNOSTIC OR THERAPEUTIC USE.

To place your order, please contact us by Phone **1.858.829.3082** Fax **1.858.481.8694**
 Or you can Email us at: info@bpsbioscience.com
 Please visit our website at: www.bpsbioscience.com



6044 Cornerstone Court West, Suite E
San Diego, CA 92121
Tel: 1.858.829.3082
Fax: 1.858.481.8694
Email: info@bpsbioscience.com

Sequence:

MSPILGYWKIKGLVQPTRLLEYLEEKYEEHLYERDEGDKWRNKKFELGLEFPNLPYYI
DGDVKLTQSMARIYIADKHNMLGGCPKERAIEISMLEGAVLDIRYGVSRAYSDFETLK
VDFLSKLPPEMLKMFEDRLCHKTYLNGDHVTHPDFMLYDALDVVLYMDPMCLDAFPKLV
CFKKRIEAIQIDKYLKSSKYIAWPLQGQWQATFGGGDHPPKSD**LEVLFQGPLGSE**DQEE
NTLRELRLFLRDVTKRLATDKRFNIFSKPVDIEEVSDYLEVIKEPMDLSTVITKIDKHNLYL
TAKDFLKDIDLICSNALYNPDKDPGDKIIRHRACTLKDTAHAIIAAELDPEFNKLCEEIK
E

OUR PRODUCTS ARE FOR RESEARCH USE ONLY. NOT FOR DIAGNOSTIC OR THERAPEUTIC USE.

To place your order, please contact us by Phone **1.858.829.3082** Fax **1.858.481.8694**
Or you can Email us at: info@bpsbioscience.com
Please visit our website at: www.bpsbioscience.com