



SZABO SCANDIC

Part of Europa Biosite

Produktinformation



Forschungsprodukte & Biochemikalien



Zellkultur & Verbrauchsmaterial



Diagnostik & molekulare Diagnostik



Laborgeräte & Service

Weitere Information auf den folgenden Seiten!
See the following pages for more information!



Lieferung & Zahlungsart

siehe unsere [Liefer- und Versandbedingungen](#)

Zuschläge

- Mindermengenzuschlag
- Trockeneiszuschlag
- Gefahrgutzuschlag
- Expressversand

SZABO-SCANDIC HandelsgmbH

Quellenstraße 110, A-1100 Wien

T. +43(0)1 489 3961-0

F. +43(0)1 489 3961-7

mail@szabo-scandic.com

www.szabo-scandic.com

[linkedin.com/company/szaboscandic](https://www.linkedin.com/company/szaboscandic) 

Data Sheet

CREBBP (1081-1197), GST-tag

Human, recombinant, N-terminal GST-tag

Catalog #: 31128

Lot #: 130917-G2 **Conc.:** 0.23 mg/ml

Formulated in: 40 mM Tris pH 8.0, 110 mM NaCl, 2.2 mM KCl, 0.04% Tween-20 and 20% glycerol

Stability: At least 6 months at -80°C . Avoid freeze/thaw cycles. Storing diluted protein is not recommended, if necessary, use carrier protein (BSA 0.1 – 0.5%).

References:

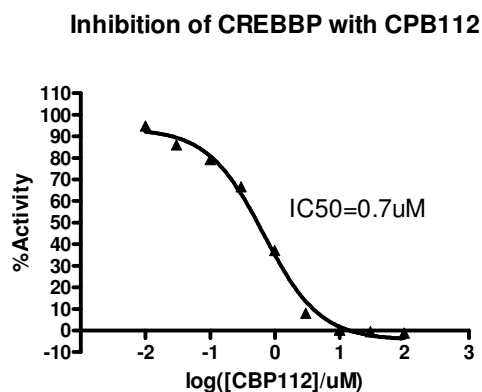
1. Panagopoulos, I., *et al.*, *Hum Mol Genet.* 2001 Feb 15; **10(4)**: 395-404.
2. Huang, W.C., *et al.*, *Mol Cell.* 2007 Apr 13; **26(1)**:75-87.

Description: Human bromodomain CREB binding protein (CREBBP), also known as CBP, RSTS and KAT3A, GenBank Accession No. NM_004380, a.a. 1081-1197, with N-terminal GST-tag, MW=41 kDa, expressed in an *E. coli* expression system.

Assay Conditions: Assay was performed using the BPS Bioscience CREBBP Inhibitor Screening Assay Kit (Catalog #32607) following the manufacturer's instructions and using varying concentrations of CPB112.

Application: Useful for the study of enzyme kinetics, screening inhibitors, and selectivity profiling.

Quality Assurance

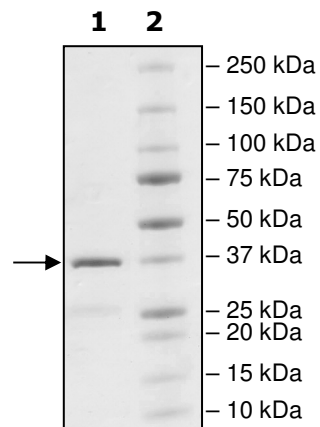


4-20% SDS-PAGE
Coomassie staining

Lane 1:
2 µg CREBBP

Lane 2:
Protein Marker

MW: 41 kDa
Purity: ≥90%



OUR PRODUCTS ARE FOR RESEARCH USE ONLY. NOT FOR DIAGNOSTIC OR THERAPEUTIC USE.

To place your order, please contact us by Phone **1.858.829.3082** Fax **1.858.481.8694**

Or you can Email us at: info@bpsbioscience.com

Please visit our website at: www.bpsbioscience.com



6044 Cornerstone Court W, Ste E
San Diego, CA 92121
Tel: 1.858.829.3082
Fax: 1.858.481.8694
Email: info@bpsbioscience.com

Sequence

MSPILGYWKIKGLVQPTRLLEYLEEKYEEHLYERDEGDKWRNKKFELGLEFPNLPYYI
DGDVKLTQSMAIRYIADKHNMLGGCPKERAEISMLEGAVLDIRYGVSRIAYSKDFETLK
VDFLSKLPEMLKMFEDRLCHKTYLNGDHVTHPDFMLYDALDVVLYMDPMCLDAFPKLV
CFKKRIEAIPQIDKYLKSSKYIAWPLQGQATFGGGDHPKSDLEVLFGPLGSRKKIF
KPEELRQALMPTLEALYRQDPESLPFRQPVDPQLLGIPDYFDIVKNPMDLSTIKRKLDT
GQYQEPWQYVDDVWLMFNNAWLYNRKTSRVYKFCSKLAEVFEQEIDPVMQSLG

OUR PRODUCTS ARE FOR RESEARCH USE ONLY. NOT FOR DIAGNOSTIC OR THERAPEUTIC USE.

To place your order, please contact us by Phone **1.858.829.3082** Fax **1.858.481.8694**
Or you can Email us at: info@bpsbioscience.com
Please visit our website at: www.bpsbioscience.com