



SZABO SCANDIC

Part of Europa Biosite

Produktinformation



Forschungsprodukte & Biochemikalien



Zellkultur & Verbrauchsmaterial



Diagnostik & molekulare Diagnostik



Laborgeräte & Service

Weitere Information auf den folgenden Seiten!
See the following pages for more information!



Lieferung & Zahlungsart

siehe unsere [Liefer- und Versandbedingungen](#)

Zuschläge

- Mindermengenzuschlag
- Trockeneiszuschlag
- Gefahrgutzuschlag
- Expressversand

SZABO-SCANDIC HandelsgmbH

Quellenstraße 110, A-1100 Wien

T. +43(0)1 489 3961-0

F. +43(0)1 489 3961-7

mail@szabo-scandic.com

www.szabo-scandic.com

[linkedin.com/company/szaboscandic](https://www.linkedin.com/company/szaboscandic) 

Data Sheet

SMARCA2 (1375-1511), GST-tag

Human, recombinant, N-terminal GST-tag
Catalog #: 31141
Lot#: 130614-D Conc.: 5.22 mg/ml

Formulated in: 40mM Tris pH8.0,
110mM NaCl, 2.2mM KCl, and 20%
glycerol.

Stability: >6 months at -80°C

References:

1. Van Houdt JK., *et al. Nat Genet.* 2012; **44(4)**:445-9.
2. Wolff D., *et al. Mol Syndromol.* 2012; **2(6)**:237-244.

Description: Human SMARCA2, GenBank Accession No. NM_003070, a.a. 1375-1511, with N-terminal GST-tag, MW=43kDa, expressed in an *E. coli* expression system.

Assay Conditions:

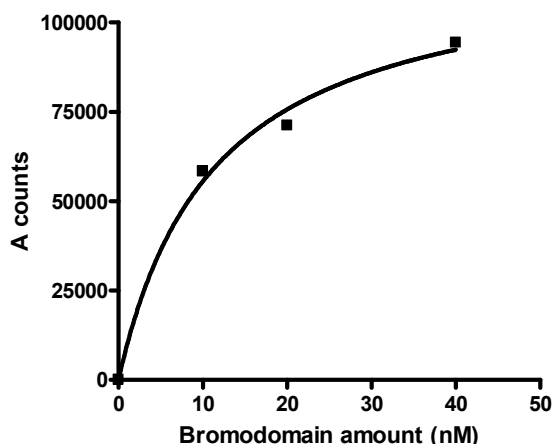
SMARCA2 is incubated with Bromodomain Ligand 2 in SMARCA2 buffer in a 10 µl reaction for 30 minutes. AlphaLISA® GSH acceptor beads (PerkinElmer) are added, followed by AlphaScreen® Streptavidin-conjugated donor beads (PerkinElmer). After 10 minutes incubation at RT, Alphacounts are measured.

Application:

Useful for the study of bromodomain binding assays, screening inhibitors and selectivity profiling.

Quality Assurance

SMARCA2 Activity

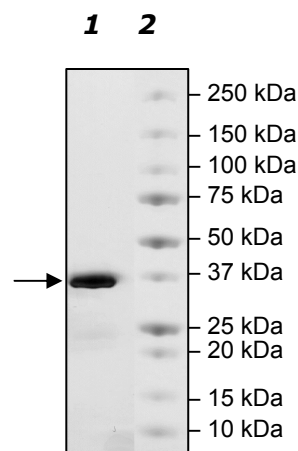


4-20% SDS-PAGE Coomassie staining

Lane 1:
2.5 µg SMARCA2

Lane 2:
Protein Marker

MW: 43 kDa
Purity: ≥92%



OUR PRODUCTS ARE FOR RESEARCH USE ONLY. NOT FOR DIAGNOSTIC OR THERAPEUTIC USE.

To place your order, please contact us by Phone **1.858.829.3082** Fax **1.858.481.8694**
Or you can Email us at: info@bpsbioscience.com
Please visit our website at: www.bpsbioscience.com



6044 Cornerstone Court W, Ste E
San Diego, CA 92121
Tel: 1.858.829.3082
Fax: 1.858.481.8694
Email: info@bpsbioscience.com

Protein Sequence:

MSPILGYWKIKGLVQPTRLLLEYLEEKYEEHLYERDEGDKWRNKKFELGLEFPNLPYYI
DGDVKLTQSMAIRYIADKHNMLGGCPKERAIEISMLEGAVLDIRYGVSRIAYSKDFETLK
VDFLSKLPPEMLKMFEDRLCHKTYLNGDHVTHPDFMLYDALDVVLYMDPMCLDAFPKLV
CFKKRIEAIQIDKYLKSSKYIAWPLQGQATFGGGDHPPKSDLEVLFQGPLGSPEFKL
SPNPPKLTQMNAIIDTVINYKDRCNVEKVPSNSQLEIEGNSSGRQLSEVFIQLPSRKEL
PEYYELIRKPVDFKKIKERIRNHKYRSLGDLEKDVMLLCHNAQTFNLEGSQIYEDSIVLQ
SVFKSARQKIAKEEE

OUR PRODUCTS ARE FOR RESEARCH USE ONLY. NOT FOR DIAGNOSTIC OR THERAPEUTIC USE.

To place your order, please contact us by Phone **1.858.829.3082** Fax **1.858.481.8694**
Or you can Email us at: info@bpsbioscience.com
Please visit our website at: www.bpsbioscience.com