



SZABO SCANDIC

Part of Europa Biosite

Produktinformation



Forschungsprodukte & Biochemikalien



Zellkultur & Verbrauchsmaterial



Diagnostik & molekulare Diagnostik



Laborgeräte & Service

Weitere Information auf den folgenden Seiten!
See the following pages for more information!



Lieferung & Zahlungsart

siehe unsere [Liefer- und Versandbedingungen](#)

Zuschläge

- Mindermengenzuschlag
- Trockeneiszuschlag
- Gefahrgutzuschlag
- Expressversand

SZABO-SCANDIC HandelsgmbH

Quellenstraße 110, A-1100 Wien

T. +43(0)1 489 3961-0

F. +43(0)1 489 3961-7

mail@szabo-scandic.com

www.szabo-scandic.com

[linkedin.com/company/szaboscandic](https://www.linkedin.com/company/szaboscandic) 

Data Sheet

ASH1L (2433-2548)

Human, recombinant, N-terminal His-tag

Catalog #: 31147

Lot #: 130708-G1 Conc.: 0.18 mg/ml

Formulated in: 40 mM Tris-HCl pH 8, 110 mM NaCl, 2.2 mM KCl, 0.04% Tween-20, and 20% glycerol.

Stability: >6 months at -80°C . Avoid freeze/thaw cycles.

References:

1. Muller, S., *et al.*, *Expert Rev. Mol. Med.* 2011;**13**:1-21.
2. An, S., *et al.*, *J. Biol Chem.* 2011;**286**(10):8369-8374.

Description:

Human bromodomain ash1 (absent, small or homeotic)-like (ASH1L), also known as, KMT2H, ASH1-Like Protein, Ash1, huASH1 and EC 2.1.1.43, GenBank Accession No. NM_018489, a.a. 2433 - 2548, with N-terminal His-tag, MW = 14.2 kDa, expressed in an *E. coli* expression system.

Application:

Useful for the study of bromodomain binding assays, screening inhibitors, and selectivity profiling.

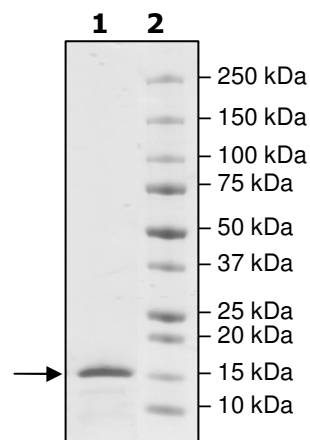
Quality Assurance

**4-20% SDS-PAGE
Coomassie staining**

Lane 1:
2.7 μg ASH1L

Lane 2:
Protein Marker

MW: 14.2 kDa
Purity: $\geq 90\%$



OUR PRODUCTS ARE FOR RESEARCH USE ONLY. NOT FOR DIAGNOSTIC OR THERAPEUTIC USE.

To place your order, please contact us by Phone **1.858.829.3082** Fax **1.858.481.8694**

Or you can Email us at: info@bpsbioscience.com

Please visit our website at: www.bpsbioscience.com



6044 Cornerstone Court West, Suite E
San Diego, CA 92121
Tel: 1.858.829.3082
Fax: 1.858.481.8694
Email: info@bpsbioscience.com

Sequence:

MHHHHHHEVARAARLAQIFKEICDGIISYKDSSRQALAAPLLNLPPKKKNADYYEKISD
PLDLITIEKQILTGYYKTVEAFDADMLKVFRNAEKYYGRKSPVGRDVCRLRKAYYNAR
HEASAQ

OUR PRODUCTS ARE FOR RESEARCH USE ONLY. NOT FOR DIAGNOSTIC OR THERAPEUTIC USE.

To place your order, please contact us by Phone **1.858.829.3082** Fax **1.858.481.8694**
Or you can Email us at: info@bpsbioscience.com
Please visit our website at: www.bpsbioscience.com