



# SZABO SCANDIC

Part of Europa Biosite

## Produktinformation



Forschungsprodukte & Biochemikalien



Zellkultur & Verbrauchsmaterial



Diagnostik & molekulare Diagnostik



Laborgeräte & Service

Weitere Information auf den folgenden Seiten!  
See the following pages for more information!



### Lieferung & Zahlungsart

siehe unsere [Liefer- und Versandbedingungen](#)

### Zuschläge

- Mindermengenzuschlag
- Trockeneiszuschlag
- Gefahrgutzuschlag
- Expressversand

### SZABO-SCANDIC HandelsgmbH

Quellenstraße 110, A-1100 Wien

T. +43(0)1 489 3961-0

F. +43(0)1 489 3961-7

[mail@szabo-scandic.com](mailto:mail@szabo-scandic.com)

[www.szabo-scandic.com](http://www.szabo-scandic.com)

[linkedin.com/company/szaboscandic](https://www.linkedin.com/company/szaboscandic) 

## Data Sheet

### PLK3, His-Tag

Human, Recombinant, N-terminal His-tag  
**Catalog #:** 40035  
**Lot #:** 140317-G4      **Conc.:** 0.26 mg/ml

**Formulated in:** 40 mM Tris-HCl pH 8.0, 110 mM NaCl, 2.2 mM KCl, 0.04% Tween-20, 3 mM DTT and 20% glycerol.

**Stability:** At least 6 months at  $-80^{\circ}\text{C}$ . Avoid freeze/thaw cycles.

#### References:

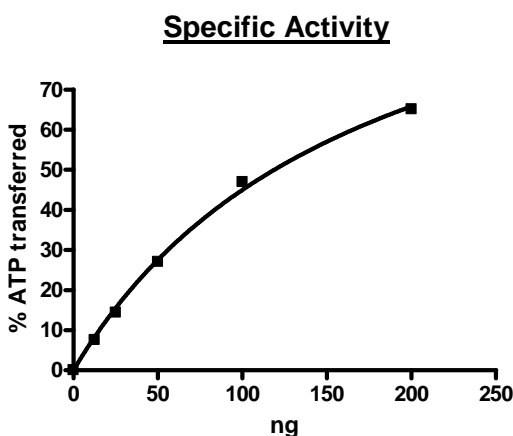
1. Li,Z., et al., J. Biol. Chem. **280** (17), 16843-16850 (2005)
2. Xie,S., et al., Oncogene **23** (21), 3822-3829 (2004)

**Description:** Human Polo-like kinase 3, or PLK3, GenBank Accession No. NM\_004073, a.a. 58-340 with an N-terminal His-tag, expressed in a Baculovirus infected Sf9 cell expression system. MW=37 kDa.

**Specific Activity:**  $\geq 110$  pmol/min/ $\mu\text{g}$ .  
Assay Conditions: 40 mM Tris-HCl pH 7.4, 20 mM  $\text{MgCl}_2$ , 0.1 mg/mL BSA and 1 mM DTT using 1 mg/ml Casein substrate and 20  $\mu\text{M}$  ATP. Reaction was done at  $30^{\circ}\text{C}$  for 45 min. Amount of ATP transferred was calculated using Kinase-Glo reagent from Promega.

**Application:** Useful for the study of enzyme kinetics, screening inhibitors, and selectivity profiling.

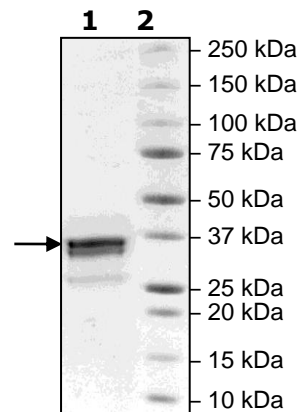
## Quality Assurance



#### 4-20% SDS-PAGE Coomassie staining

**Lane 1:**  
2  $\mu\text{g}$  PLK3  
**Lane 2:**  
Protein Marker

**MW:** 37 kDa  
**Purity:**  $\geq 68\%$



OUR PRODUCTS ARE FOR RESEARCH USE ONLY. NOT FOR DIAGNOSTIC OR THERAPEUTIC USE.

To place your order, please contact us by Phone **1.858.202.1401** Fax **1.858.481.8694**  
Or you can Email us at: [info@bpsbioscience.com](mailto:info@bpsbioscience.com)  
Please visit our website at: [www.bpsbioscience.com](http://www.bpsbioscience.com)



6042 Cornerstone Court West, Suite B  
San Diego, CA 92121  
**Tel:** 1.858.202.1401  
**Fax:** 1.858.481.8694  
**Email:** [info@bpsbioscience.com](mailto:info@bpsbioscience.com)

OUR PRODUCTS ARE FOR RESEARCH USE ONLY. NOT FOR DIAGNOSTIC OR THERAPEUTIC USE.

To place your order, please contact us by Phone **1.858.202.1401** Fax **1.858.481.8694**  
Or you can Email us at: [info@bpsbioscience.com](mailto:info@bpsbioscience.com)  
Please visit our website at: [www.bpsbioscience.com](http://www.bpsbioscience.com)