



# SZABO SCANDIC

Part of Europa Biosite

## Produktinformation



Forschungsprodukte & Biochemikalien



Zellkultur & Verbrauchsmaterial



Diagnostik & molekulare Diagnostik



Laborgeräte & Service

Weitere Information auf den folgenden Seiten!  
See the following pages for more information!



### Lieferung & Zahlungsart

siehe unsere [Liefer- und Versandbedingungen](#)

### Zuschläge

- Mindermengenzuschlag
- Trockeneiszuschlag
- Gefahrgutzuschlag
- Expressversand

### SZABO-SCANDIC HandelsgmbH

Quellenstraße 110, A-1100 Wien

T. +43(0)1 489 3961-0

F. +43(0)1 489 3961-7

[mail@szabo-scandic.com](mailto:mail@szabo-scandic.com)

[www.szabo-scandic.com](http://www.szabo-scandic.com)

[linkedin.com/company/szaboscandic](https://www.linkedin.com/company/szaboscandic) 

## Data Sheet

### CaMK2 $\alpha$

Human recombinant, with N-terminal GST-tag  
**Catalog #:** 40038  
**Lot #:** 110818      **Conc.:** 0.1 mg/ml

**Formulated in:** 50 Tris-HCl, pH 7.5, 150 mM NaCl, 0.1 mM PMSF, 0.1 mM EDTA, 0.1 mM EGTA, 25% glycerol, and 0.25 mM DTT.

**Stability:** >6 months at -80°C

**References:**

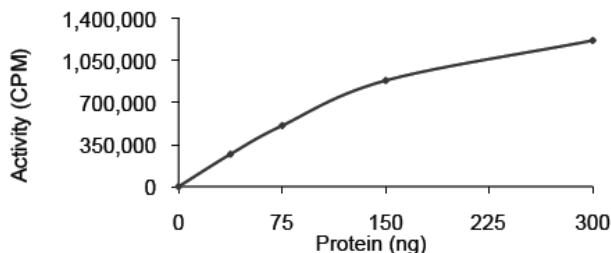
1. Silva, A J. *et al: Science* **257**: 206-211, 1992.
2. Thiagarajan, T C. *et al: Neuron*. **36**: 1103-1114, 2002.

**Description:** Recombinant human calcium/calmodulin-dependent protein kinase II alpha (CaMK2 $\alpha$ ), Genbank Accession No. NM\_171825, full length, with an N-terminal GST-tag, MW = 74 kDa, expressed in Sf9 cells via a baculovirus expression system.

**Specific Activity:** 294 pmol/min/ $\mu$ g.  
 Assay conditions: 5 mM MOPS, 2.5 mM  $\beta$ -glycerophosphate, 5 mM MgCl<sub>2</sub>, 1 mM EGTA, 0.4 mM EDTA, 0.05 mM DTT, 50  $\mu$ g/ml BSA, 2 mM ATP. 0.5 mM CaCl<sub>2</sub>, 0.03 mg/ml calmodulin. Incubate CaMK2 $\alpha$  with 0.3 mg/ml autocamtide-2 peptide as substrate and [<sup>33</sup>P]-ATP at 30°C for 15 minutes, then spot reaction on phosphocellulose paper, fix in 1% phosphoric acid, and assay with a scintillation counter.

**Application:** Useful for studying enzyme kinetics, screening inhibitors, and selectivity profiling.

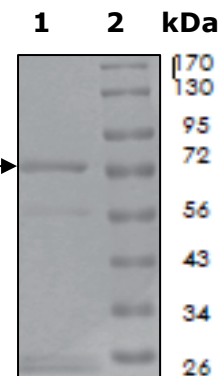
### Quality Assurance



**10% SDS-PAGE  
 Coomassie staining**

**Lane 1:** CaMK2 $\alpha$   
**Lane 2:** Protein Marker

**MW:** 74 kDa  
**Purity:**  $\geq$  80%



OUR PRODUCTS ARE FOR RESEARCH USE ONLY. NOT FOR DIAGNOSTIC OR THERAPEUTIC USE.

To place your order, please contact us by Phone **1.858.829.3082** Fax **1.858.481.8694**  
 Or you can Email us at: [info@bpsbioscience.com](mailto:info@bpsbioscience.com)  
 Please visit our website at: [www.bpsbioscience.com](http://www.bpsbioscience.com)