



SZABO SCANDIC

Part of Europa Biosite

Produktinformation



Forschungsprodukte & Biochemikalien



Zellkultur & Verbrauchsmaterial



Diagnostik & molekulare Diagnostik



Laborgeräte & Service

Weitere Information auf den folgenden Seiten!
See the following pages for more information!



Lieferung & Zahlungsart

siehe unsere [Liefer- und Versandbedingungen](#)

Zuschläge

- Mindermengenzuschlag
- Trockeneiszuschlag
- Gefahrgutzuschlag
- Expressversand

SZABO-SCANDIC HandelsgmbH

Quellenstraße 110, A-1100 Wien

T. +43(0)1 489 3961-0

F. +43(0)1 489 3961-7

mail@szabo-scandic.com

www.szabo-scandic.com

[linkedin.com/company/szaboscandic](https://www.linkedin.com/company/szaboscandic) 

Data Sheet

LKB1/MO25/STRAD Complex

Human, recombinant protein complex

Catalog #: 40069

Lot #: 100524-2 **Conc.:** 0.8 mg/ml

Formulated in: 45 mM Tris-HCl, pH 8.0, 124 mM NaCl, 2.4 mM KCl, 18 mM glutathione, 10% glycerol, and 3 mM DTT.

Stability: At least 6 months at -80°C .
 Avoid multiple freeze/thaw cycles.

References:

1. Yoo, L.I., *et al.* (2002). *Nat. Rev. Cancer* **2(7)**: 529-535.
2. Katajisto P, *et al.* (2007). *Biochim. Biophys. Acta* **1775 (1)**: 63-75.

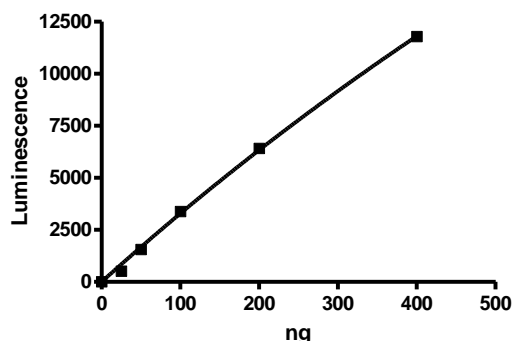
Description: Complex of human LKB1, also known as STK11, GenBank Accession No. NM_000455, a.a. 2-433, with N-terminal His-tag, calculated MW=49 kDa (LKB1 runs anomalously on SDS-PAGE), MO25 GenBank Accession No. NM_016289, a.a. 2-341, with N-terminal GST-tag, calculated MW=66 kDa and STRAD, GenBank Accession No. NM_001003787, a.a. 2-431, with N-terminal GST-tag, calculated MW=74 kDa, individually expressed in Sf9 cells using a Baculovirus expression system.

Specific Activity: 24 pmole/min/ μg .
 Assay Condition: 100 μM ATP and 0.2 mg/ml LKBtide peptide was used as a substrate. Reaction was done at 30°C for 30 min. Reaction progress was monitored using ADP-Glo reagents (Promega).

Application: Useful for the study of enzyme kinetics, screening inhibitors, and selectivity profiling.

Quality Assurance

Specific Activity



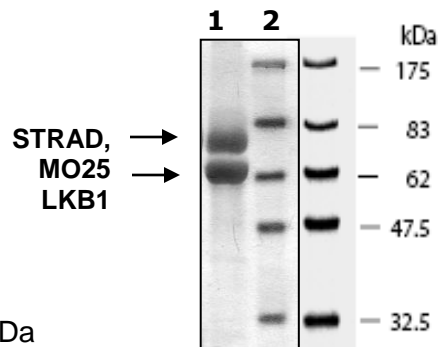
**10% SDS-PAGE
 Coomassie staining**

Lane 1:
 10 μg LKB1/
 MO25/STRAD complex

Lane 2:
 Protein Marker
 BioLabs (#P7708L)

MW: 49, 66, 74 kDa

Purity: $\geq 70\%$



OUR PRODUCTS ARE FOR RESEARCH USE ONLY. NOT FOR DIAGNOSTIC OR THERAPEUTIC USE.

To place your order, please contact us by Phone **1.858.202.1401** Fax **1.858.481.8694**

Or you can Email us at: info@bpsbioscience.com

Please visit our website at: www.bpsbioscience.com