



# SZABO SCANDIC

Part of Europa Biosite

## Produktinformation



Forschungsprodukte & Biochemikalien



Zellkultur & Verbrauchsmaterial



Diagnostik & molekulare Diagnostik



Laborgeräte & Service

Weitere Information auf den folgenden Seiten!  
See the following pages for more information!



### Lieferung & Zahlungsart

siehe unsere [Liefer- und Versandbedingungen](#)

### Zuschläge

- Mindermengenzuschlag
- Trockeneiszuschlag
- Gefahrgutzuschlag
- Expressversand

### SZABO-SCANDIC HandelsgmbH

Quellenstraße 110, A-1100 Wien

T. +43(0)1 489 3961-0

F. +43(0)1 489 3961-7

[mail@szabo-scandic.com](mailto:mail@szabo-scandic.com)

[www.szabo-scandic.com](http://www.szabo-scandic.com)

[linkedin.com/company/szaboscandic](https://www.linkedin.com/company/szaboscandic) 

## Data Sheet

### p38 $\alpha$ , GST-tag

Human, Recombinant, N-terminal GST-tag

**Catalog #:** 40070

**Lot #:** 190128-G2      **Conc.:** 0.77 mg/ml

**Formulated in:** 40 mM Tris-HCl, pH 8.0, 110 mM NaCl, 2.2 mM KCl, 0.04% Tween-20, 2 mM DTT and 20% Glycerol.

**Stability:** At least 6 months at  $-80^{\circ}\text{C}$ .  
 Avoid freeze/thaw cycles.

**References:**

1. Johnson, G. *et al.*, *Science*. **298(5600)**: 1911-1912, 2002.
2. Raingeud, J. *et al.*, *JBC*. **270(13)**: 7420-7426, 1995.

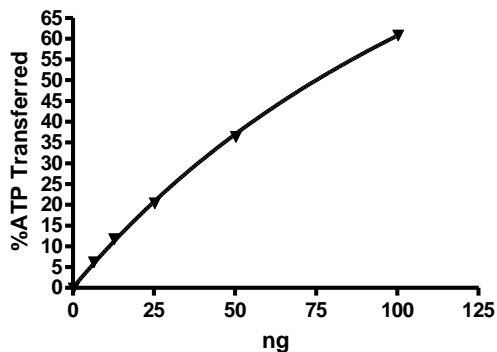
**Description:** Human p38 $\alpha$ , also known as MARK14, p38 MAP Kinase, and Mitogen-Activated Protein Kinase 14, a.a. 1-360 (end), Genbank Accession No. NM\_139012 with an N-terminal GST-tag, expressed in a Baculovirus infected Sf9 cell expression system. MW = 68 kDa.

**Specific Activity:**  $\geq 100$  pmol/min/ $\mu\text{g}$   
 Assay conditions: Assay was performed in kinase buffer containing 0.2 mM DTT using P38 peptide substrate (0.1 mg/ml) and 20  $\mu\text{M}$  ATP. Reaction was done at 30  $^{\circ}\text{C}$  for 40 min. Amount of ATP transferred was calculated using Kinase-Glo reagent (Promega).

**Application:** Useful for the study of enzyme kinetics, screening inhibitors, and selectivity profiling.

## Quality Assurance

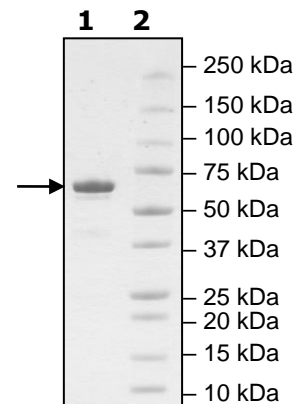
**Specific Activity**



**4-20% SDS-PAGE**  
**Coomassie staining**

**Lane 1:**  
 2  $\mu\text{g}$  MAPK14  
**Lane 2:**  
 Protein Marker

**MW:** 68 kDa  
**Purity:**  $\geq 90\%$



OUR PRODUCTS ARE FOR RESEARCH USE ONLY. NOT FOR DIAGNOSTIC OR THERAPEUTIC USE.

To place your order, please contact us by Phone **1.858.202.1401** Fax **1.858.481.8694**

Or you can Email us at: [info@bpsbioscience.com](mailto:info@bpsbioscience.com)

Please visit our website at: [www.bpsbioscience.com](http://www.bpsbioscience.com)