



# SZABO SCANDIC

Part of Europa Biosite

## Produktinformation



Forschungsprodukte & Biochemikalien



Zellkultur & Verbrauchsmaterial



Diagnostik & molekulare Diagnostik



Laborgeräte & Service

Weitere Information auf den folgenden Seiten!  
See the following pages for more information!



### Lieferung & Zahlungsart

siehe unsere [Liefer- und Versandbedingungen](#)

### Zuschläge

- Mindermengenzuschlag
- Trockeneiszuschlag
- Gefahrgutzuschlag
- Expressversand

### SZABO-SCANDIC HandelsgmbH

Quellenstraße 110, A-1100 Wien

T. +43(0)1 489 3961-0

F. +43(0)1 489 3961-7

[mail@szabo-scandic.com](mailto:mail@szabo-scandic.com)

[www.szabo-scandic.com](http://www.szabo-scandic.com)

[linkedin.com/company/szaboscandic](https://www.linkedin.com/company/szaboscandic) 

## Data Sheet

### **PHKG1**

Human, recombinant, N-terminal GST tag

**Catalog #:** 40150

**Lot #:** 111031      **Conc.:** 0.1 mg/ml

**Formulated in:** 50 mM Tris-HCl, pH 7.5, 150 mM NaCl, 10mM glutathione, 0.1 mM EDTA, 0.25 mM DTT, 0.1 mM PMSF, and 25% glycerol.

**Stability:** >12 months at -80°C

**References:**

1. Burwinkel, B., et al. *Eur. J. Human Genet.* **11:** 516-526 (2003).
2. Wehner, M., et al. *Human Genet* **96(5):** 616-618 (1995).

**Description:** Human PHKG1 (phosphorylase kinase gamma 1), GenBank Accession No. NM\_006213, full length, with N-terminal GST tag, MW ~70 kDa, expressed in Sf9 insect cells via a baculovirus expression system.

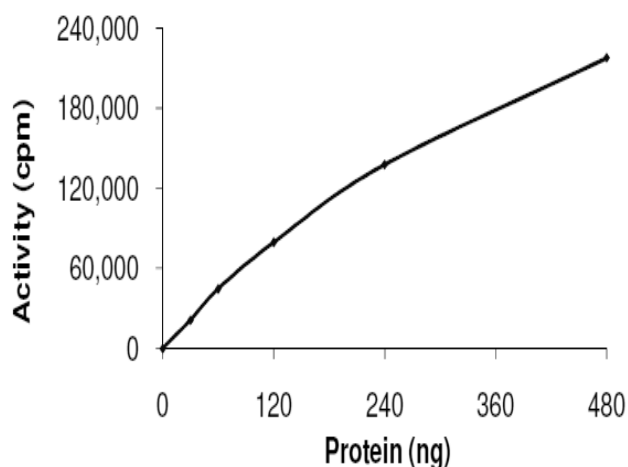
**Specific Activity:** 29 pmol/min/μg

**Assay Buffer:** 5 mM MOPS, 2.5 mM β-glycerophosphate, 5 mM MgCl<sub>2</sub>, 1 mM EGTA, 0.4 mM EDTA, 0.05 mM DTT, 2 mM ATP. Incubate PHKG1 with 0.25 mg/ml ZIKtide peptide substrate and [<sup>33</sup>P]-ATP at 30°C for 15 minutes, then spot reaction on phosphocellulose paper, fix in 1% phosphoric acid, and assay with a scintillation counter.

**Application:** Useful for the study of enzyme kinetics, screening inhibitors, and selectivity profiling.

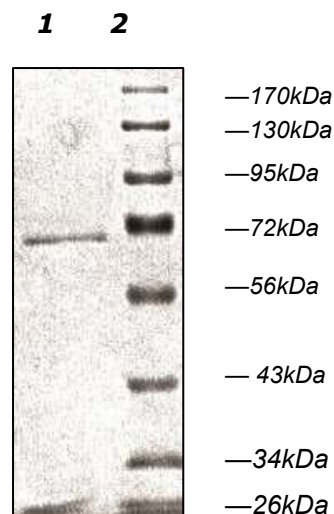
### **Quality Assurance**

**10% SDS-PAGE**  
**Coomassie staining**



**Lane 1:**  
PHKG1  
**Lane 2:**  
Protein Marker

**MW:** 70 kDa  
**Purity:** ≥75%



OUR PRODUCTS ARE FOR RESEARCH USE ONLY. NOT FOR DIAGNOSTIC OR THERAPEUTIC USE.

To place your order, please contact us by Phone 1.858.829.3082 Fax 1.858.481.8694

Or you can Email us at: [info@bpsbioscience.com](mailto:info@bpsbioscience.com)

Please visit our website at: [www.bpsbioscience.com](http://www.bpsbioscience.com)