



# SZABO SCANDIC

Part of Europa Biosite

## Produktinformation



Forschungsprodukte & Biochemikalien



Zellkultur & Verbrauchsmaterial



Diagnostik & molekulare Diagnostik



Laborgeräte & Service

Weitere Information auf den folgenden Seiten!  
See the following pages for more information!



### Lieferung & Zahlungsart

siehe unsere [Liefer- und Versandbedingungen](#)

### Zuschläge

- Mindermengenzuschlag
- Trockeneiszuschlag
- Gefahrgutzuschlag
- Expressversand

### SZABO-SCANDIC HandelsgmbH

Quellenstraße 110, A-1100 Wien

T. +43(0)1 489 3961-0

F. +43(0)1 489 3961-7

[mail@szabo-scandic.com](mailto:mail@szabo-scandic.com)

[www.szabo-scandic.com](http://www.szabo-scandic.com)

[linkedin.com/company/szaboscandic](https://www.linkedin.com/company/szaboscandic)

## Data Sheet

### **PKC $\alpha$ , GST-Tag**

Human, Recombinant, N-terminal GST tag

**Catalog #:** 40157

**Lot#:** 170329-3      **Conc.:** 0.52 mg/ml

**Formulated in:** 40 mM Tris-HCl, pH 8.0, 110 mM NaCl, 2.2 mM KCl, 0.04% Tween20, 3 mM DTT, 20% glycerol, 1.6 mM Glutathione

**Stability:** At least 6 months at  $-80^{\circ}\text{C}$ . Avoid freeze/thaw cycles. Protein may be diluted to  $\geq 100 \mu\text{g/ml}$  in PBS + glycerol and stored at  $-80^{\circ}\text{C}$ .

**References:**

1. Braz, J. Et al., Nature Med. 10:248-254 (2004).
2. Coussens, L. et al., Science.233:859-866 (1986).

**Description:**

Recombinant human PKC $\alpha$ , full length, (GenBank Accession No. NM\_002737) with N-terminal GST-tag, expressed in Sf9 insect cells via a baculovirus expression system. MW= 102 kDa.

**Specific Activity:**  $\geq 250 \text{ pmol/min}/\mu\text{g}$

**One unit will transfer 1pmol of phosphate from ATP to Histone H1 in 1 minute at pH 7.4 at 30 degrees C.**

250units/ug protein

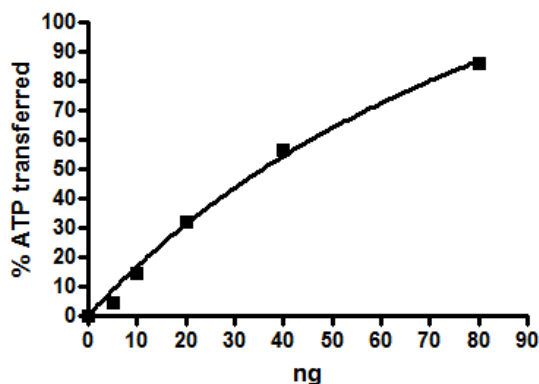
**Assay Conditions:** Assay was done in Kinase buffer containing 0.1 mM CaCl<sub>2</sub> and lipid activator (1 mg/ml Phosphatidyl Serine and 0.02 mg/ml Diacylglycerol in 0.3% TritonX-100) using Histone H1 (0.1 mg/ml) and 20  $\mu\text{M}$  ATP. Reaction was done at  $30^{\circ}\text{C}$  for 40 min. Amount of ATP transferred was calculated using Kinase-Glo reagent (Promega)

**Application:**

Useful for the study of enzyme kinetics, screening inhibitors, and selectivity profiling.

## **Quality Assurance**

### **Specific Activity**

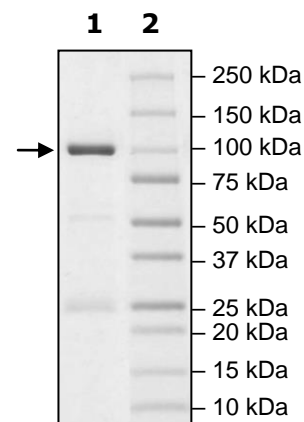


### **4-20% SDS-PAGE Coomassie staining**

**Lane 1:** PKC $\alpha$   
**Lane 2:** Protein Marker

**Purity:**  $\geq 80\%$

**MW:** 102 kDa



OUR PRODUCTS ARE FOR RESEARCH USE ONLY. NOT FOR DIAGNOSTIC OR THERAPEUTIC USE.

To place your order, please contact us by Phone **1.858.829.3082** Fax **1.858.481.8694**

Or you can Email us at: [info@bpsbioscience.com](mailto:info@bpsbioscience.com)

Please visit our website at: [www.bpsbioscience.com](http://www.bpsbioscience.com)