



SZABO SCANDIC

Part of Europa Biosite

Produktinformation



Forschungsprodukte & Biochemikalien



Zellkultur & Verbrauchsmaterial



Diagnostik & molekulare Diagnostik



Laborgeräte & Service

Weitere Information auf den folgenden Seiten!
See the following pages for more information!



Lieferung & Zahlungsart

siehe unsere [Liefer- und Versandbedingungen](#)

Zuschläge

- Mindermengenzuschlag
- Trockeneiszuschlag
- Gefahrgutzuschlag
- Expressversand

SZABO-SCANDIC HandelsgmbH

Quellenstraße 110, A-1100 Wien

T. +43(0)1 489 3961-0

F. +43(0)1 489 3961-7

mail@szabo-scandic.com

www.szabo-scandic.com

[linkedin.com/company/szaboscandic](https://www.linkedin.com/company/szaboscandic) 

Data Sheet

RIPK2, GST-Tag

Human, Recombinant, N-terminal GST-Tag
Catalog #: 40173
Lot #: 180410 **Conc.:** 0.843 mg/ml

Formulated in: 40 mM Tris-HCl, pH 8.0,
 110 mM NaCl, 2.2 mM KCl, 0.04%
 Tween20, 3mM DTT, 20% glycerol

Stability: At least 6 months at -80°C .
 Avoid freeze/thaw cycles. Storing diluted
 enzyme is not recommended, if necessary,
 use carrier protein (BSA 0.1 – 0.5%).

References:

1. Hsu, H. et al., Immunity 4: 387-396, 1996.
2. Kim, J Y. et al., J Cell Sci. 2011 Feb 15;124(Pt 4):647-56.

Description:

Human RIPK1, also known as RCK and MAP3K19, GenBank Accession No. NM_003821, a.a. 2-299, with N-terminal GST-tag, MW=61 kDa, expressed in a Baculovirus-infected Sf9 cell expression system.

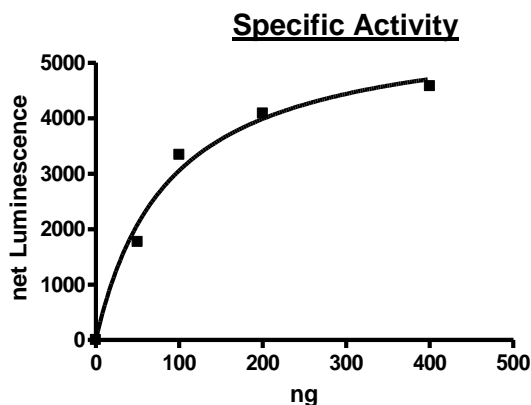
Specific Activity: ≥ 15 pmol/min/ μg .

Assay Conditions: Assay was done in a Kinase buffer (BPS Cat. #79334) using MBP (0.2 mg/ml) as a substrate with 20 μM ATP at 30°C for 45 minutes. The amount of ATP transferred was calculated using Kinase-Glo reagent (Promega).

Application:

Useful for the study of enzyme kinetics, screening inhibitors, and selectivity profiling.

Quality Assurance



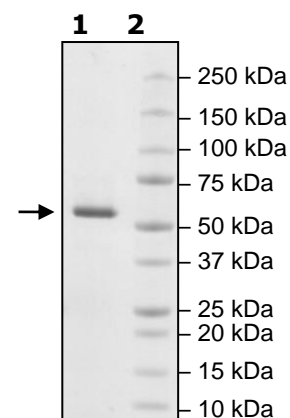
4-20% SDS-PAGE
Coomassie staining

Lane 1:
RIPK2

Lane 2:
Protein Marker

Purity: $\geq 90\%$

MW: 61 kDa





6042 Cornerstone Court West, Suite B
San Diego, CA 92121
Tel: 1.858.829.3082
Fax: 1.858.481.8694
Email: info@bpsbioscience.com

Sequence

MSPILGYWKIKGLVQPTRLLEYLEEKYEEHLYERDEGDKWRNKKFELGLEFPNLPYYI
DGDVKLTQSMAIRYIADKHNMLGGCPKERAEISMLEGAVLDIRYGVSRAYSKDFETLK
VDFLSKLPEMLKMFKDRLCHKTYLNGDHVTHPDFMLYDALDVVLYMDPMCLDAFPKLV
CFKKRIEAIQIDKYLKSSKYIAWPLQGQWQATFGGGDHLEVLFGGPLGSNGEAICSALP
TIPYHKLADLRYLSRGASGTVSSARHADWRVQVAVKHLHIHTPLLDSEKDVLRREAIL
HKARFSYILPILGICNEPEFLGIVTEYMPNGSLNELLHRKTEYPDVAWPLRFRILHEIALG
VNYLHNMTPLLLHDLKTQNILLDNEFHVKIADFGLSKWRMMSLSQSRSSKSAPEGGTI
IYMPPENYEPGQKSRASIKHDIYSYAVITWEVLSRKQPFEDVTNPLQIMYSVSQGHRPVI
NEESLPYDIPHRARMISLIESGWAQNPDERPSFLKCLIELEPVLRTFEE

Red: GST tag

Blue: Linker including PreScission Protease Cleavage Site

Black: RIPK2 (aa 2-299)

OUR PRODUCTS ARE FOR RESEARCH USE ONLY. NOT FOR DIAGNOSTIC OR THERAPEUTIC USE.

To place your order, please contact us by Phone **1.858.829.3082** Fax **1.858.481.8694**

Or you can Email us at: info@bpsbioscience.com

Please visit our website at: www.bpsbioscience.com