



# SZABO SCANDIC

Part of Europa Biosite

## Produktinformation



Forschungsprodukte & Biochemikalien



Zellkultur & Verbrauchsmaterial



Diagnostik & molekulare Diagnostik



Laborgeräte & Service

Weitere Information auf den folgenden Seiten!  
See the following pages for more information!



### Lieferung & Zahlungsart

siehe unsere [Liefer- und Versandbedingungen](#)

### Zuschläge

- Mindermengenzuschlag
- Trockeneiszuschlag
- Gefahrgutzuschlag
- Expressversand

### SZABO-SCANDIC HandelsgmbH

Quellenstraße 110, A-1100 Wien

T. +43(0)1 489 3961-0

F. +43(0)1 489 3961-7

[mail@szabo-scandic.com](mailto:mail@szabo-scandic.com)

[www.szabo-scandic.com](http://www.szabo-scandic.com)

[linkedin.com/company/szaboscandic](https://www.linkedin.com/company/szaboscandic) 

## Data Sheet

### **EGFR (L858R)**

Human, recombinant, N-terminal GST-tag

**Catalog #:** 40189

**Lot#:** 130123-G1      **Conc.:** 0.24 mg/ml

**Formulated in:** 40 mM Tris-HCl pH 8.0, 110 mM NaCl, 2.2 mM KCl, 0.04% Tween-20, 20% glycerol and 3 mM DTT.

**Stability:** >6 months at -80 °C

**References:**

1. Adachi, S. *et al.*, *Cancer Res.* **67 (13)**, 6493-6501 (2007)
2. Rosano, L. *et al.*, *Cancer Res.* **67 (13)**, 6351-6359 (2007)

**Application Reference(s):**

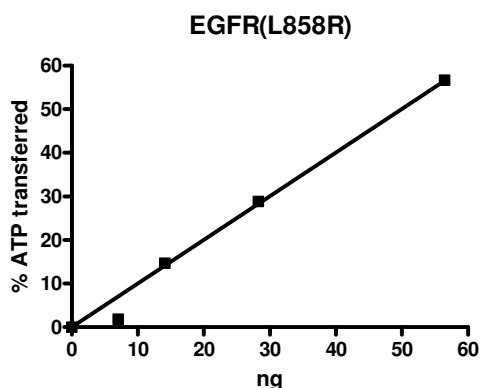
1. Figueroa, M., Oberlies, N.H., *et al.*, *The Journal of Antibiotics.* **65**, 559-564 (2012).

**Description:** Human EGFR with L858R mutation (GenBank Accession No. NM\_005228), (a.a. 668-1210) with N-terminal GST-tag, MW = 88 kDa, expressed in SF9 cells via a baculovirus expression system.

**Specific Activity:** 340 pmol/min/μg.  
 Assay conditions: Assay was performed in a kinase buffer containing 0.2 mM DTT using Poly-(Glu4:Tyr)-biotin substrate (0.2 mg/ml) and 20 μM ATP. Reaction was done at 30°C for 30 min. ATP transferred was calculated using Kinase-Glo reagent (Promega).

**Application:** Useful for the study of enzyme kinetics, screening inhibitors, and selectivity profiling.

## **Quality Assurance**

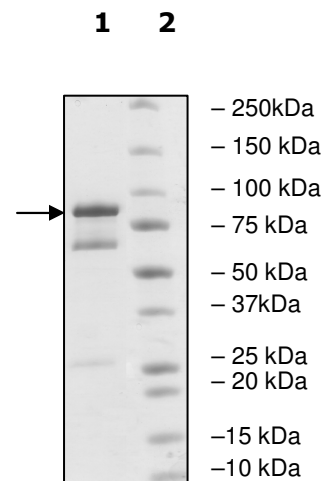


**4-20% SDS-PAGE**  
**Coomassie staining**

**Lane 1:**  
 2 μg EGFR L858R

**Lane 2:**  
 Protein Marker

**MW:** 88 kDa  
**Purity:** ≥63%



OUR PRODUCTS ARE FOR RESEARCH USE ONLY. NOT FOR DIAGNOSTIC OR THERAPEUTIC USE.

To place your order, please contact us by Phone **1.858.829.3082** Fax **1.858.481.8694**  
 Or you can Email us at: [info@bpsbioscience.com](mailto:info@bpsbioscience.com)  
 Please visit our website at: [www.bpsbioscience.com](http://www.bpsbioscience.com)