



SZABO SCANDIC

Part of Europa Biosite

Produktinformation



Forschungsprodukte & Biochemikalien



Zellkultur & Verbrauchsmaterial



Diagnostik & molekulare Diagnostik



Laborgeräte & Service

Weitere Information auf den folgenden Seiten!
See the following pages for more information!



Lieferung & Zahlungsart

siehe unsere [Liefer- und Versandbedingungen](#)

Zuschläge

- Mindermengenzuschlag
- Trockeneiszuschlag
- Gefahrgutzuschlag
- Expressversand

SZABO-SCANDIC HandelsgmbH

Quellenstraße 110, A-1100 Wien

T. +43(0)1 489 3961-0

F. +43(0)1 489 3961-7

mail@szabo-scandic.com

www.szabo-scandic.com

[linkedin.com/company/szaboscandic](https://www.linkedin.com/company/szaboscandic) 

Data Sheet

EPHA4

Human, recombinant, N-terminal GST tag

Catalog #: 40193

Lot #: 140616 **Conc.:** 0.48 mg/ml

Formulated in: 40 mM Tris-HCl, pH 8.0, 110 mM NaCl, 2.2 mM KCl, 0.04% Tween-20, 3 mM DTT, 20% glycerol.

Stability: >6 months at -80°C. Avoid freeze/thaw cycles. Storing diluted enzyme is not recommended, if necessary, use carrier protein (BSA 0.1 – 0.5%).

References:

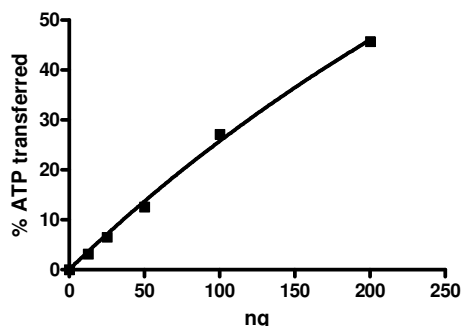
1. Flanagan, J.G., *et al. Ann. Rev. Neurosci.* **21**: 309-345 (1998).
2. Dottori, M., *et al. Proc. Natl. Acad. Sci. USA* **95**: 13248-13253 (1998).

Description: Human EPHA4 (Ephrin Receptor A4), also known as TYRO1, SEK, and HEK8, GenBank Accession No. NM_004438, a.a. 610-887, with N-terminal GST tag, MW = 58 kDa, expressed in Sf9 insect cells via a baculovirus expression system.

Specific Activity: 61 pmole/min/μg
 Assay Conditions: Assay was done in Kinase buffer containing 0.2 mM DTT using Poly-(Glu4:Tyr)-biotin substrate (0.2 mg/ml) and 20 μM ATP. Reaction was done at 30°C for 40 min. Amount of ATP transferred was calculated using Kinase-Glo reagent (Promega).

Application: Useful for the study of enzyme kinetics, screening inhibitors, and selectivity profiling.

Quality Assurance



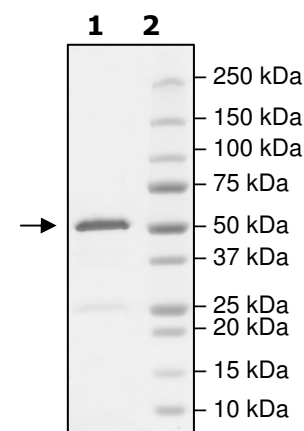
4-20% SDS-PAGE Coomassie staining

Lane 1:
1.8 μg EPHA4

Lane 2:
Protein Marker

Purity: ≥90%

MW: 58 kDa



OUR PRODUCTS ARE FOR RESEARCH USE ONLY. NOT FOR DIAGNOSTIC OR THERAPEUTIC USE.

To place your order, please contact us by Phone **1.858.829.3082** Fax **1.858.481.8694**

Or you can Email us at: info@bpsbioscience.com

Please visit our website at: www.bpsbioscience.com



6044 Cornerstone Court W, Ste E
San Diego, CA 92121
Tel: 1.858.829.3082
Fax: 1.858.481.8694
Email: info@bpsbioscience.com

Sequence

MSPILGYWKIKGLVQPTRLLEYLEEKYEEHLYERDEGDKWRNKKFELGLEFPNLPYYID
GDVKLTQSMAIIRYIADKHNMLGGCPKERAEISMLEGAVLDIRYGVSRIAYSKDFETLKVDF
LSKLPPEMLKMFKDRLCHKTYLNGDHVTHPDFMLYDALDVVLYMDPMCLDAFPKLVCFKK
RIEAIPQIDKYLKSSKYIAWPLQGQWQATFGGGDHLEVLFGGPLGSREFAKEIDASCIEK
VIGVGEFGEVCSGRLKVPKGREICVAIKTLKAGYTDKQRRDFLSEASIMGQFDHPNIIHL
EGVVTCKPVMITEYMENGLDAFLRKNDGRFTVIQLVGMLRGIGSGMKYLSDMSYVH
RDLAARNILVNSNLVCKVSDFGMSRVLEDDPEAAAYTTRGGKIPIRWTAPEAIAYRKFTSA
SDVWSYGIVMWEVMSYGERPYWDMSNQDVKAIEEGYRLPPPMDCPIALHQLMLDCW
QKERSDRPKFGQIVNMLDKLIRNPNS

Red: GST tag

Blue: Linker including PreScission Protease Cleavage Site

Black: EPHA4 (a.a. 610-887)

OUR PRODUCTS ARE FOR RESEARCH USE ONLY. NOT FOR DIAGNOSTIC OR THERAPEUTIC USE.

To place your order, please contact us by Phone **1.858.829.3082** Fax **1.858.481.8694**

Or you can Email us at: [**info@bpsbioscience.com**](mailto:info@bpsbioscience.com)

Please visit our website at: [**www.bpsbioscience.com**](http://www.bpsbioscience.com)