



# SZABO SCANDIC

Part of Europa Biosite

## Produktinformation



Forschungsprodukte & Biochemikalien



Zellkultur & Verbrauchsmaterial



Diagnostik & molekulare Diagnostik



Laborgeräte & Service

Weitere Information auf den folgenden Seiten!  
See the following pages for more information!



### Lieferung & Zahlungsart

siehe unsere [Liefer- und Versandbedingungen](#)

### Zuschläge

- Mindermengenzuschlag
- Trockeneiszuschlag
- Gefahrgutzuschlag
- Expressversand

### SZABO-SCANDIC HandelsgmbH

Quellenstraße 110, A-1100 Wien

T. +43(0)1 489 3961-0

F. +43(0)1 489 3961-7

[mail@szabo-scandic.com](mailto:mail@szabo-scandic.com)

[www.szabo-scandic.com](http://www.szabo-scandic.com)

[linkedin.com/company/szaboscandic](https://www.linkedin.com/company/szaboscandic) 

## Data Sheet

### **INSR, GST-Tag**

Human, Recombinant, N-terminal GST-tag

**Catalog #:** 40241

**Lot #:** 140905-A      **Conc.:** 1.18 mg/ml

**Formulated in:** 40 mM Tris-HCl pH 8.0, 110 mM NaCl, 2.2 mM KCl, 0.04% Tween 20, 16 mM Glutathione, 3 mM DTT and 20% glycerol

**Stability:** At least 6 months at  $-80^{\circ}\text{C}$

#### **References:**

1. Zhou, P. et al. J. Pediatr. Endocrinol. Metab. 21 (4), 369-375 (2008).
2. Machorro-Lazo, M.V. et al., Gynecol. Obstet. Invest. 67 (1), 14-19 (2008).

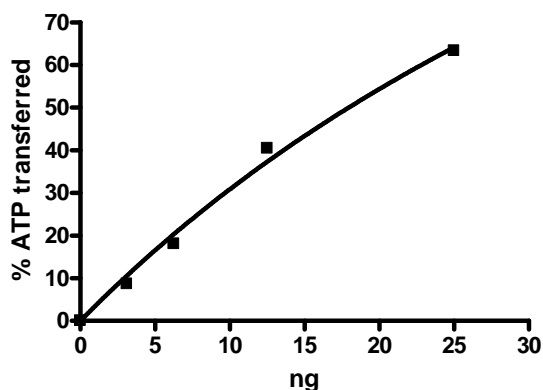
**Description:** Human insulin receptor (INSR), GenBank Accession No. NM\_001079817, a.a. 999-end with an N-terminal GST-tag, expressed in a baculovirus expression system. MW=67 kDa

**Specific Activity:** 752 pmol/min/ $\mu\text{g}$ .  
**Assay Conditions:** 40 mM Tris-HCL pH 7.4, 20 mM  $\text{MgCl}_2$ , 0.1 mg/mL BSA and 0.2 mM DTT using 0.1 mg/ml Alextide substrate and 20 mM ATP. Reaction was done at  $30^{\circ}\text{C}$  for 40 min. Amount of ATP transferred was calculated using Kinase-Glo reagent from Promega.

**Application:** Enzyme kinetics, autophosphorylation, and phosphorylation of target substrates.

## **Quality Assurance**

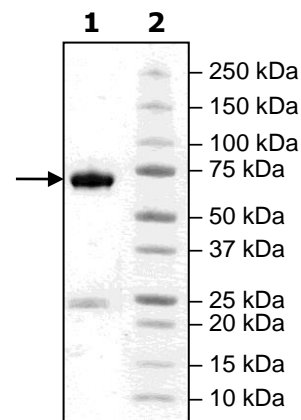
### **Specific Activity**



### **4-20% SDS-PAGE Coomassie staining**

**Lane 1:**  
2  $\mu\text{g}$  INSR  
**Lane 2:**  
Protein Marker

**MW:** 70 kDa  
**Purity:**  $\geq 57\%$



OUR PRODUCTS ARE FOR RESEARCH USE ONLY. NOT FOR DIAGNOSTIC OR THERAPEUTIC USE.

To place your order, please contact us by Phone **1.858.202.1401** Fax **1.858.481.8694**

Or you can Email us at: [info@bpsbioscience.com](mailto:info@bpsbioscience.com)

Please visit our website at: [www.bpsbioscience.com](http://www.bpsbioscience.com)