



# SZABO SCANDIC

Part of Europa Biosite

## Produktinformation



Forschungsprodukte & Biochemikalien



Zellkultur & Verbrauchsmaterial



Diagnostik & molekulare Diagnostik



Laborgeräte & Service

Weitere Information auf den folgenden Seiten!  
See the following pages for more information!



### Lieferung & Zahlungsart

siehe unsere [Liefer- und Versandbedingungen](#)

### Zuschläge

- Mindermengenzuschlag
- Trockeneiszuschlag
- Gefahrgutzuschlag
- Expressversand

### SZABO-SCANDIC HandelsgmbH

Quellenstraße 110, A-1100 Wien

T. +43(0)1 489 3961-0

F. +43(0)1 489 3961-7

[mail@szabo-scandic.com](mailto:mail@szabo-scandic.com)

[www.szabo-scandic.com](http://www.szabo-scandic.com)

[linkedin.com/company/szaboscandic](https://www.linkedin.com/company/szaboscandic) 

## Data Sheet

### RET

Human, recombinant, N-terminal GST-tag  
**Catalog #:** 40267  
**Lot#:** 1001                      **Conc.:** 0.75 mg/ml

**Formulated in:** 25 mM Tris-HCl, pH 8.0,  
 100 mM NaCl, 0.05% Tween-20, 50%  
 glycerol, 10 mM reduced glutathione, and 3  
 mM DTT.

**Stability:** >6 months at -80°C

#### References:

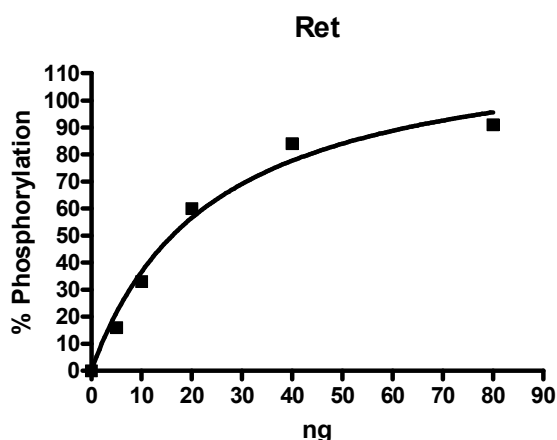
1. Moore, S.W., Appfelstaedt, J. and Zaahl, M.G. J. Pediatr. Surg. **42 (2)**, 326-332 (2007)
2. Griseri, P., Lantieri, F., Puppo, F., Bachetti, T., Di Duca, M., Ravazzolo, R. and Ceccherini, I. Hum. Mutat. **28 (2)**, 168-176 (2007)

**Description:** Human Ret (GenBank Accession No. NM\_020975), (a.a. 658-end) with N-terminal GST tag, MW= 77.5 kDa, expressed in an Baculovirus infected Sf9 cell expression system.

**Specific Activity:** 52 pmole/min/μg. One unit is defined as the amount of enzyme that will transfer 1 pmol phosphate to Tyr substrate per minute at pH 7.4 and 30°C. Assay buffer: 50 mM HEPES, pH 7.4, 3 mM MgCl<sub>2</sub>, 3 mM MnCl<sub>2</sub>, 1 mM DTT, 3 μM Na-orthovanadate, 0.1 mM ATP, 30 μg/ml Poly (Glu:Tyr)<sub>4:1</sub> substrate, and 2 μg/ml recombinant RET.

**Application:** Useful for the study of enzyme kinetics, screening inhibitors, and selectivity profiling.

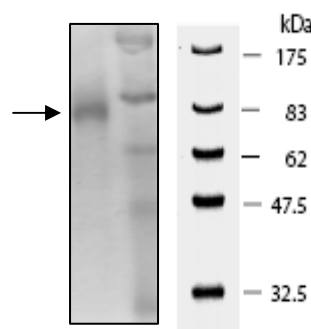
### Quality Assurance



#### 10% SDS-PAGE Coomassie staining

**Lane 1:**  
RET  
**Lane 2:**  
Protein Marker  
BioLabs (#P7708L)

**MW:** 77.5kDa  
**Purity:** ≥90%



OUR PRODUCTS ARE FOR RESEARCH USE ONLY. NOT FOR DIAGNOSTIC OR THERAPEUTIC USE.

To place your order, please contact us by Phone **1.858.829.3082** Fax **1.858.481.8694**  
 Or you can Email us at: [info@bpsbioscience.com](mailto:info@bpsbioscience.com)  
 Please visit our website at: [www.bpsbioscience.com](http://www.bpsbioscience.com)