



SZABO SCANDIC

Part of Europa Biosite

Produktinformation



Forschungsprodukte & Biochemikalien



Zellkultur & Verbrauchsmaterial



Diagnostik & molekulare Diagnostik



Laborgeräte & Service

Weitere Information auf den folgenden Seiten!
See the following pages for more information!



Lieferung & Zahlungsart

siehe unsere [Liefer- und Versandbedingungen](#)

Zuschläge

- Mindermengenzuschlag
- Trockeneiszuschlag
- Gefahrgutzuschlag
- Expressversand

SZABO-SCANDIC HandelsgmbH

Quellenstraße 110, A-1100 Wien

T. +43(0)1 489 3961-0

F. +43(0)1 489 3961-7

mail@szabo-scandic.com

www.szabo-scandic.com

[linkedin.com/company/szaboscandic](https://www.linkedin.com/company/szaboscandic) 

Data Sheet

ERN1 (IRE1)

Human, recombinant, N-terminal GST-tag

Catalog #: 40306

Lot #: 141021

Conc.: 0.1 mg/ml

Formulated in: 50 mM Tris-HCl, pH 7.5, 150 mM NaCl, 10 mM glutathione, 0.1 mM EDTA, 0.25 mM DTT, 0.1 mM PMSF, 25% glycerol.

Stability: >6 months at -80°C . Avoid freeze/thaw cycles. Storing diluted protein is not recommended, if necessary, use carrier protein (BSA 0.1 – 0.5%).

References:

1. Niwa, M., *et al.*, *Cell*. 1999; **99**: 691-702.
2. Iwawaki, T. *et al.*, *Proc. Nat. Acad. Sci.* 2009; **106**: 16657-16662.

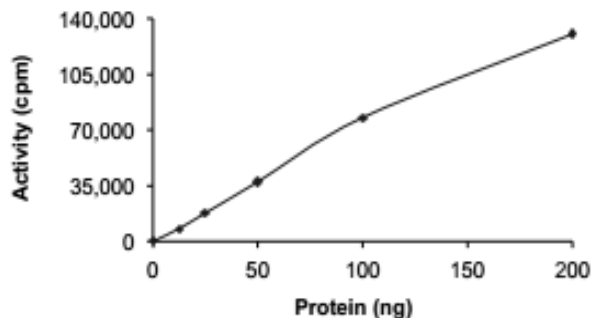
Description: Human endoplasmic reticulum-to-nucleus signaling 1 (ERN1), also known as inositol-requiring protein 1 (IRE1), GenBank Accession No. NM_001433, a.a. 468-977 (end) MW = 87 kDa, expressed in a baculovirus-infected Sf9 insect cell expression system.

Specific Activity: 55 pmol/min/ μg
Assay Conditions: 10 μl of varying amounts of ERN1 was mixed with 5 μl of 1 mg/ml myelin basic protein substrate and 5 μl of H_2O . Reaction was initiated by adding 5 μl of 250 μM [^{33}P]-ATP and incubating for 15 min at 30°C followed by spotting the reaction on phosphocellulose paper, fixing in 1% phosphoric acid, and assaying with a scintillation counter.

Application: Useful for studying enzyme kinetics and screening small molecule inhibitors.

Quality Assurance

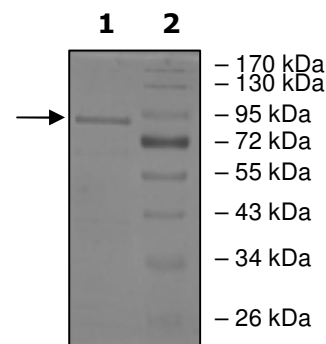
Specific Activity



4-20% SDS-PAGE
Coomassie staining

Lane 1: ERN1
Lane 2: Protein Marker

MW: 87 kDa
Purity: $\geq 90\%$



OUR PRODUCTS ARE FOR RESEARCH USE ONLY. NOT FOR DIAGNOSTIC OR THERAPEUTIC USE.

To place your order, please contact us by Phone **1.858.829.3082** Fax **1.858.481.8694**
 Or you can Email us at: info@bpsbioscience.com
 Please visit our website at: www.bpsbioscience.com