



SZABO SCANDIC

Part of Europa Biosite

Produktinformation



Forschungsprodukte & Biochemikalien



Zellkultur & Verbrauchsmaterial



Diagnostik & molekulare Diagnostik



Laborgeräte & Service

Weitere Information auf den folgenden Seiten!
See the following pages for more information!



Lieferung & Zahlungsart

siehe unsere [Liefer- und Versandbedingungen](#)

Zuschläge

- Mindermengenzuschlag
- Trockeneiszuschlag
- Gefahrgutzuschlag
- Expressversand

SZABO-SCANDIC HandelsgmbH

Quellenstraße 110, A-1100 Wien

T. +43(0)1 489 3961-0

F. +43(0)1 489 3961-7

mail@szabo-scandic.com

www.szabo-scandic.com

[linkedin.com/company/szaboscandic](https://www.linkedin.com/company/szaboscandic) 

Data Sheet

BMX, Active

human, recombinant, N-terminal GST tag

Catalog #: 40402

Lot #: 140709-5 **Conc.:** 0.7 mg/ml

Formulated in: 50 mM Tris-HCl, pH 7.5, 150 mM NaCl, 0.25 mM DTT, 0.1 mM EGTA, 0.1 mM EDTA, 0.1 mM PMSF, 25% glycerol

Stability: >6 months at -80°C . Avoid freeze/thaw cycles. Storing diluted enzyme is not recommended, if necessary, use carrier protein (BSA 0.1 – 0.5%).

References:

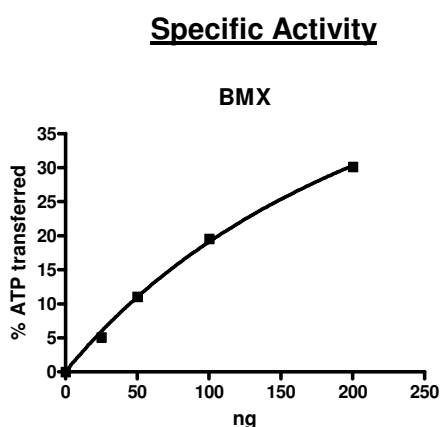
1. Tamagnone, L. *et al. Oncogene*. 1994 Dec;9(12):3683-8.
2. Saharinen, P. *et al. Blood*. 1997 Dec 1;90(11):4341-53

Description: Recombinant full-length human cytoplasmic tyrosine-protein kinase BMX (BMX), also known as bone marrow tyrosine kinase gene in chromosome X protein, epithelial and endothelial tyrosine kinase, ETK, and NTK38 was expressed by baculovirus in Sf9 insect cells using an N-terminal GST tag, a.a. 1-675 (end). The gene accession number is NM_001721 (variant 2).

Specific Activity: 43 pmol/min/ μg
Assay Conditions: Assay was done in Kinase buffer containing 0.2 mM DTT using Poly-(Tyr,Glu) substrate (0.2 mg/ml) and 20 mM ATP. Reaction was done at 30°C for 45 min. Amount of ATP transferred was measured using Kinase-Glo reagent (Promega)

Application: Useful for the study of enzyme kinetics, screening inhibitors, and selectivity profiling.

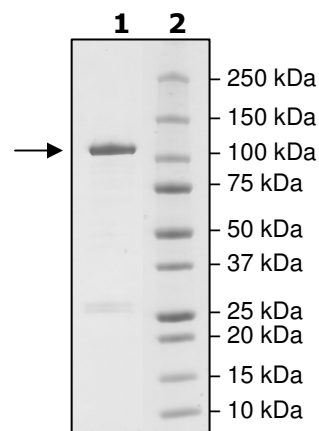
Quality Assurance



4-20% SDS-PAGE **Coomassie staining**

Lane 1:
2 μg BMX
Lane 2:
Protein Marker

MW: 110 kDa
Purity: $\geq 80\%$



OUR PRODUCTS ARE FOR RESEARCH USE ONLY. NOT FOR DIAGNOSTIC OR THERAPEUTIC USE.

To place your order, please contact us by Phone **1.858.829.3082** Fax **1.858.481.8694**

Or you can Email us at: info@bpsbioscience.com

Please visit our website at: www.bpsbioscience.com