



# SZABO SCANDIC

Part of Europa Biosite

## Produktinformation



Forschungsprodukte & Biochemikalien



Zellkultur & Verbrauchsmaterial



Diagnostik & molekulare Diagnostik



Laborgeräte & Service

Weitere Information auf den folgenden Seiten!  
See the following pages for more information!



### Lieferung & Zahlungsart

siehe unsere [Liefer- und Versandbedingungen](#)

### Zuschläge

- Mindermengenzuschlag
- Trockeneiszuschlag
- Gefahrgutzuschlag
- Expressversand

### SZABO-SCANDIC HandelsgmbH

Quellenstraße 110, A-1100 Wien

T. +43(0)1 489 3961-0

F. +43(0)1 489 3961-7

[mail@szabo-scandic.com](mailto:mail@szabo-scandic.com)

[www.szabo-scandic.com](http://www.szabo-scandic.com)

[linkedin.com/company/szaboscandic](https://www.linkedin.com/company/szaboscandic) 

## Data Sheet

### Wee1, GST-Th-Tag

Human, Recombinant, N-terminal  
 GST-Thrombin-Tag  
**Catalog #:** 40412  
**Lot #:** 170313-G      **Conc.:** 0.16 mg/mL

**Formulated in:** 40 mM Tris-HCl, pH 8.0, 110 mM NaCl, 2.2 mM KCl, 0.04% Tween20, 20% glycerol, 2mM glutathione

**Stability:** At least 6 months at  $-80^{\circ}\text{C}$ . *Avoid freeze/thaw cycles. Protein may be diluted to  $\geq 100 \mu\text{g/ml}$  in PBS + glycerol and stored at  $-80^{\circ}\text{C}$ .*

**References:**

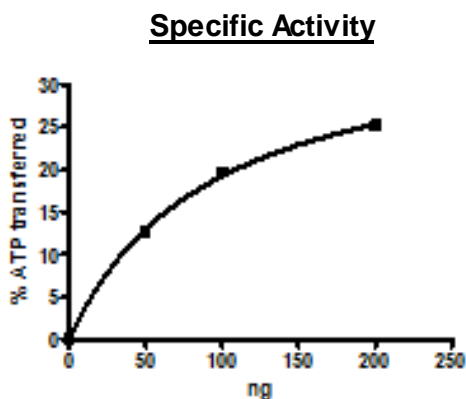
1. Parker, L., *et al.*, *Science*. 1992; **257(5078)**:1955.
2. Lundgreen, K, *et al.*, *Cell*. 1991 Mar; **64(6)**:1111-1122.

**Description:** Human Wee1 protein, also known as Wee1A Kinase, GenBank Accession No. NM\_003390, amino acids 215-646 (end), with an N-terminal GST-Thrombin tag, expressed in a Baculovirus infected Sf9 cell expression system. MW = 75 kDa.

**Specific Activity:**  $\geq 42 \text{ pmol/min}/\mu\text{g}$   
 Assay Description: Assay was done in Kinase buffer containing 1 mM DTT using Poly-(Lys4:Tyr) substrate (0.2 mg/ml) and 20  $\mu\text{M}$  ATP. Reaction was done at  $30^{\circ}\text{C}$  for 45 min. Amount of ATP transferred was calculated using Kinase-Glo reagent (Promega)

**Application:** Useful for the study of enzyme kinetics, screening inhibitors, and selectivity profiling.

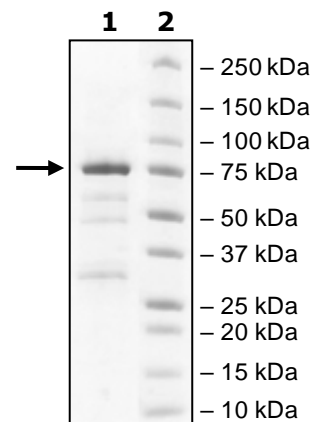
## Quality Assurance



**4-20% SDS-PAGE  
 Coomassie staining**

**Lane 1:**  
 2 $\mu\text{g}$  Wee1  
**Lane 2:**  
 Protein Marker

**MW:** 75 kDa  
**Purity:**  $\geq 75\%$



OUR PRODUCTS ARE FOR RESEARCH USE ONLY. NOT FOR DIAGNOSTIC OR THERAPEUTIC USE.

To place your order, please contact us by Phone **1.858.829.3082** Fax **1.858.481.8694**  
 Or you can Email us at: [info@bpsbioscience.com](mailto:info@bpsbioscience.com)  
 Please visit our website at: [www.bpsbioscience.com](http://www.bpsbioscience.com)



6042 Cornerstone Court W, Ste B  
San Diego, CA 92121  
Tel: 1.858.829.3082  
Fax: 1.858.481.8694  
Email: info@bpsbioscience.com

## Sequence

MSPI LGYWKIKGLVQPTRLLLEYLEEKYEEHLYERDEGDKWRNKKFELGLEFPNLPYYI  
DGDVCLTQSMAI IRY IADKHNMLGGCPKERAEISMLEGAVLDIRYGVSR IAYS KDFETL  
KVDFLSKLP EMLKMFKDR LCHKTYLNGDHVTHPDFMLYDALDVVLYMDPMCLDAFPKLV  
CFKKRIEAI PQIDKYLKSSKYIAWPLQGWQATFGGGDH **LVPRGS**MDTEKSGKREFDVRQ  
TPQVNINPFTPDSLLLHSSGQCRRRKRTYWNDS CGEDMEASDYELEDETRPAKRITITE  
SNMKSRYTTEFHELEKIGSGEFGSVFKCVKRLDGC IYAIKR SKKPLAGSVDEQNALREV  
YAHAVLGQHS HVVRYFSAWAEDDHMLIQNEYCNGGSLADAI SENYRIMSYFKEAELKDL  
LLQVGRGLRYIHSMSLVHMDIKPSNIFISRTSIPNAASEEGDEDDWASNKVMFKIGDLG  
HVTRISSPQVEEGDSRFLANEVLQENYTHLPKADIFALALTVVCAAGAEPLPRNGDQWH  
EIRQGRLPRI PQVLSQEFTELLKVMIHDPERRPSAMALVKH SVLLSASRKS AEQLRIE  
LNAEKFKNSLLQKELKKAQMAKAAAEERALFTDRMATRSTTQSNRTSR LIGKKMNRSVS  
LTIY

**Red:** GST tag

**Blue:** Linker including Thrombin Cleavage Site

Underlined GS is composed of ggatcc (BamHI site)

**Black:** WEE1(215-646(end))

OUR PRODUCTS ARE FOR RESEARCH USE ONLY. NOT FOR DIAGNOSTIC OR THERAPEUTIC USE.

To place your order, please contact us by Phone **1.858.829.3082** Fax **1.858.481.8694**

Or you can Email us at: [info@bpsbioscience.com](mailto:info@bpsbioscience.com)

Please visit our website at: [www.bpsbioscience.com](http://www.bpsbioscience.com)