



SZABO SCANDIC

Part of Europa Biosite

Produktinformation



Forschungsprodukte & Biochemikalien



Zellkultur & Verbrauchsmaterial



Diagnostik & molekulare Diagnostik



Laborgeräte & Service

Weitere Information auf den folgenden Seiten!
See the following pages for more information!



Lieferung & Zahlungsart

siehe unsere [Liefer- und Versandbedingungen](#)

Zuschläge

- Mindermengenzuschlag
- Trockeneiszuschlag
- Gefahrgutzuschlag
- Expressversand

SZABO-SCANDIC HandelsgmbH

Quellenstraße 110, A-1100 Wien

T. +43(0)1 489 3961-0

F. +43(0)1 489 3961-7

mail@szabo-scandic.com

www.szabo-scandic.com

[linkedin.com/company/szaboscandic](https://www.linkedin.com/company/szaboscandic) 

Data Sheet

CDK1/CyclinB1, GST-tag

Human, Recombinant, N-terminal GST-tag

Catalog #: 40454

Lot #: 190701-GA **Conc.:** 0.25 mg/ml

Formulated in: 40 mM Tris-HCl, pH 8.0, 110 mM NaCl, 2.2 mM KCl, 0.04% Tween-20, 20% Glycerol and 3 mM DTT.

Stability: At least 6 months from date of receipt at -80°C . Avoid freeze/thaw cycles.

References:

1. Vantieghem, A. *et al.*, *J. Biol. Chem.* 2002; **277(40)**: 37718-37731.
2. Rigas, A.C. *et al.*, *Oncogene.* 2007; **26(55)**: 7611-7619.

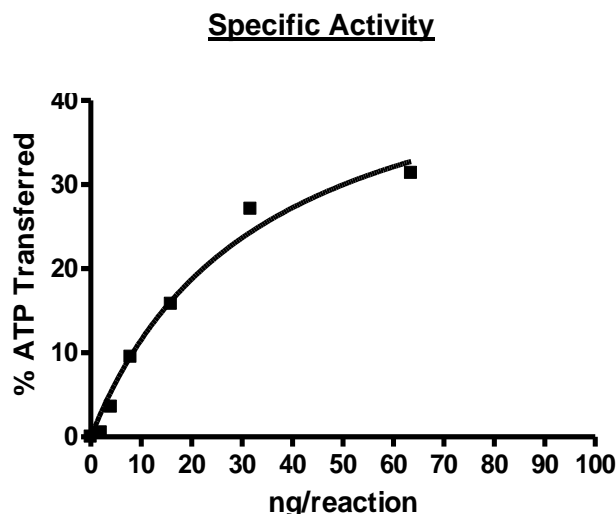
Description: Human CDK1/CyclinB1 complex of CDK1, also known as CDC, GenBank Accession No.: NM_001786, a.a. 2-297(end), with N-terminal GST-tag. MW = 60 kDa and CyclinB1, also known as CCNB1 and CCNB, GenBank Accession No.: NM_031966 a.a. 2-433(end) with N-terminal GST-tag. MW = 75 kDa. Expressed in a baculovirus-infected Sf9 cell expression system.

Specific Activity: ≥ 200 pmol/min/ μg

Assay Conditions: Assay was done in a Kinase buffer using 0.1 mg/mL CDK Substrate Peptide 1 with 20 μM ATP at 30°C for 45 min. The amount of ATP transferred was calculated using Kinase-Glo reagent (Promega).

Application: Useful for studying enzyme kinetics and screening inhibitors.

Quality Assurance

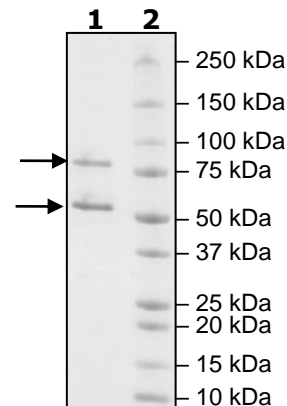


4-20% SDS-PAGE
Coomassie staining

Lane 1:
 4 μg CDK1 + CyclinB1

Lane 2:
 Protein Marker

MW: CyclinB1 75 kDa
 CDK1 60 kDa
Purity: $\geq 90\%$



OUR PRODUCTS ARE FOR RESEARCH USE ONLY. NOT FOR DIAGNOSTIC OR THERAPEUTIC USE.

To place your order, please contact us by Phone **1.858.202.1401** Fax **1.858.481.8694**

Or you can Email us at: info@bpsbioscience.com

Please visit our website at: www.bpsbioscience.com