



SZABO SCANDIC

Part of Europa Biosite

Produktinformation



Forschungsprodukte & Biochemikalien



Zellkultur & Verbrauchsmaterial



Diagnostik & molekulare Diagnostik



Laborgeräte & Service

Weitere Information auf den folgenden Seiten!
See the following pages for more information!



Lieferung & Zahlungsart

siehe unsere [Liefer- und Versandbedingungen](#)

Zuschläge

- Mindermengenzuschlag
- Trockeneiszuschlag
- Gefahrgutzuschlag
- Expressversand

SZABO-SCANDIC HandelsgmbH

Quellenstraße 110, A-1100 Wien

T. +43(0)1 489 3961-0

F. +43(0)1 489 3961-7

mail@szabo-scandic.com

www.szabo-scandic.com

[linkedin.com/company/szaboscandic](https://www.linkedin.com/company/szaboscandic) 

Data Sheet

YES1

Human, recombinant, N-terminal GST tag

Catalog #: 40488

Lot #: 140319-1 **Conc.:** 0.36 mg/ml

Formulated in: 40 mM Tris-HCl, pH 8.0, 110 mM NaCl, 2.2 mM KCl, 0.04% Tween-20, 3 mM DTT, and 20% glycerol.

Stability: >6 months at -80°C. *Avoid freeze/thaw cycles. Storing diluted enzyme is not recommended, if necessary, use carrier protein (BSA 0.1 – 0.5%).*

References:

1. Silverman, G. *et al*, Genomics 15: **442-445**, 1993.
2. Barraclough, J. *et al*, Neoplasia. 2007 Sep;**9(9)**:745-54.

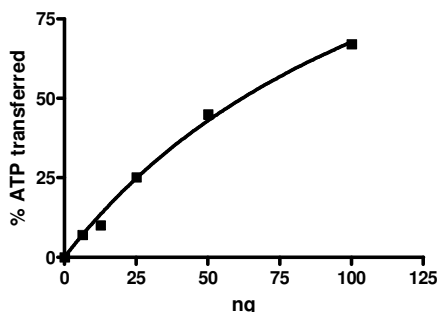
Description: Human, full length, YES1, GenBank Accession No. NM_005433, with N-terminal GST tag, a.a. 2-543(end), MW 88 kDa, expressed in Sf9 insect cells via a baculovirus expression system.

Specific Activity: 200 pmol/min/μg
Assay Conditions: Assay was done in Kinase buffer containing 0.2 mM DTT using Poly-(Glu4:Tyr)-biotin substrate (0.2 mg/ml) and 20 μM ATP. Reaction was done at 30°C for 45 min. Amount of ATP transferred was calculated using Kinase-Glo reagent (Promega)

Application: Useful for the study of enzyme kinetics, screening inhibitors, and selectivity profiling.

Quality Assurance

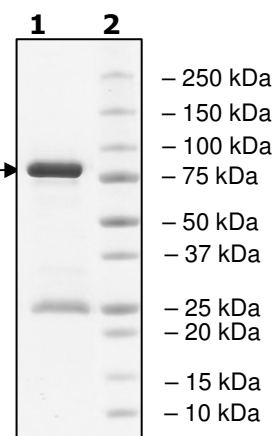
Specific Activity



4-20% SDS-PAGE Coomassie staining

Lane 1:
YES1
Lane 2:
Protein Marker

MW: 88 kDa
Purity: ≥70%



OUR PRODUCTS ARE FOR RESEARCH USE ONLY. NOT FOR DIAGNOSTIC OR THERAPEUTIC USE.

To place your order, please contact us by Phone **1.858.829.3082** Fax **1.858.481.8694**

Or you can Email us at: info@bpsbioscience.com

Please visit our website at: www.bpsbioscience.com



6044 Cornerstone Court W, Ste E
San Diego, CA 92121
Tel: 1.858.829.3082
Fax: 1.858.481.8694
Email: info@bpsbioscience.com

Sequence

MSPILGYWKIKGLVQPTRLLEYLEEKYEEHLYERDEGDKWRNKKFELGLEFPNLPYYID
GDVKLTQSMAIRYIADKHNMLGGCPKERAIEISMLEGAVLDIRYGVSRIAYSKDFETLKVDF
LSKLP EMLKMFKDR LCHKTYLNGDHVTHPDFMLYDALDVVLYMDPMCLDAFPKLVCFKK
RIEAIPIQIDKYLKSSKYIAWPLQG WQATFGGGDHLEVL FQGPLGSGIQRPTSTSSLVAAAG
CIKSKENKSPAICYRPENTPEPVSTSVSHYGAEP TTVSPCPSSSAKGTAVNFSSLSMTPF
GGSSGVTPFGGASSSFSVVPSSYPAGLTGGVTIFVALYDYEAR TTEDLSFKKGERFQIINN
TEGDWWEARSIATGKNGYIPSNYVAPADSIQAE EWYFGKMGRKDAERLLL NPGNQRGIF
LVRESE TTKGAYSLSIRDWDEIRGDNVKHYKIRKLDN GGGYYITTRAQFDTLQKLVKHYTEH
ADGLCHKLTTVCPTVKPQTQGLAKDAWEIPRESLR LEVKLGQGC FGEVWMGTWNGTTK
VAIKTLKPGTMMPEAFLQEAQIMKKLRHDKLV PLYAVVSEEP IYIVTEFMSKGSLLDFLKEG
DGKYLKLPQLVDMAAQIADGMAYIERMNYIHRDL RANILVGENLVCKIADFG LARLIEDN
EYTARQGAKFPIKWTAPEAALYGRFTIKSDVWSFG ILQTELVTKGRVPYPGMVNREVLEQ
VERGYRMPCPQGCPESLHELMNLCWKKDPDERPT FEYIQSFLEDYFTATEPQYQPGEN
L

Red: GST tag

Blue: Linker including PreScission Protease Cleavage Site

Black: YES1 (a.a. 2-543(end))

OUR PRODUCTS ARE FOR RESEARCH USE ONLY. NOT FOR DIAGNOSTIC OR THERAPEUTIC USE.

To place your order, please contact us by Phone **1.858.829.3082** Fax **1.858.481.8694**

Or you can Email us at: info@bpsbioscience.com

Please visit our website at: www.bpsbioscience.com