



SZABO SCANDIC

Part of Europa Biosite

Produktinformation



Forschungsprodukte & Biochemikalien



Zellkultur & Verbrauchsmaterial



Diagnostik & molekulare Diagnostik



Laborgeräte & Service

Weitere Information auf den folgenden Seiten!
See the following pages for more information!



Lieferung & Zahlungsart

siehe unsere [Liefer- und Versandbedingungen](#)

Zuschläge

- Mindermengenzuschlag
- Trockeneiszuschlag
- Gefahrgutzuschlag
- Expressversand

SZABO-SCANDIC HandelsgmbH

Quellenstraße 110, A-1100 Wien

T. +43(0)1 489 3961-0

F. +43(0)1 489 3961-7

mail@szabo-scandic.com

www.szabo-scandic.com

[linkedin.com/company/szaboscandic](https://www.linkedin.com/company/szaboscandic) 

Data Sheet

BRAF (V600E)

Human, recombinant, N-terminal GST tag

Catalog #: 40533

Lot #: 121121-G **Conc.:** 0.11 mg/ml

Formulated in: 40 mM Tris, pH 8.0, 110 mM NaCl, 2.2 mM KCl, 3 mM DTT and 20% glycerol.

Stability: >12 months at -80 °C

References:

1. Weber, C.K., *et al.*, *Cancer Res.* 2001 May 1; **61(9)**: 3595-8.
2. Mercer, K.E., *et al.*, *Biochim Biophys Acta.* 2003 Jun 5; **653(1)**: 25-40.

Description: Human v-raf murine sarcoma viral oncogene homolog B1 (BRAF), GenBank Accession No. NM_004333, a.a. 417-end with Val-to-Glu mutation on a.a. 600* and N-terminal GST tag, MW=69 kDa, expressed in Sf9 insect cells via a baculovirus expression system. *This mutation is often cited as V600E.

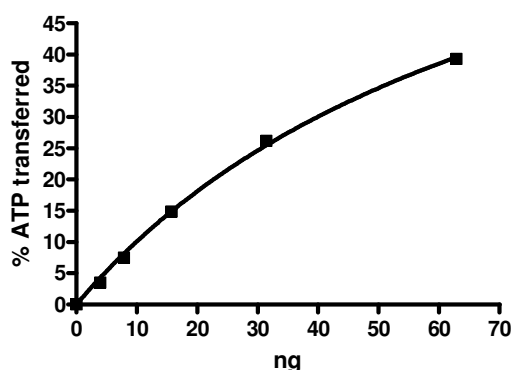
Specific Activity: 150 pmol/min/μg

Assay Conditions: Assay was performed in a kinase buffer containing 0.1 mg/ml inactive MEK1 substrate (BPS Cat# 40075) and 10 μM ATP. Reaction was done at 30°C for 30 minutes. ATP transferred was calculated using Kinase-Glo® (Promega).

Application: Useful for the study of enzyme kinetics, screening inhibitors, and selectivity profiling.

Quality Assurance

Specific Activity

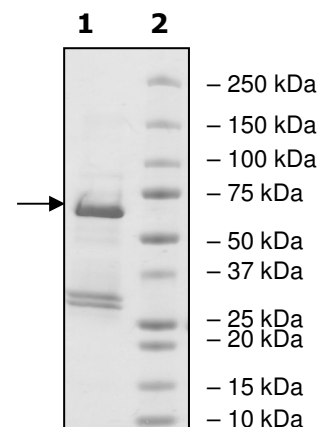


4-20% SDS-PAGE Coomassie staining

Lane 1:
3.5 μg BRAF(V600E)

Lane 2:
Protein Marker

MW: 69 kDa
Purity: ≥62%



OUR PRODUCTS ARE FOR RESEARCH USE ONLY. NOT FOR DIAGNOSTIC OR THERAPEUTIC USE.

To place your order, please contact us by Phone **1.858.829.3082** Fax **1.858.481.8694**

Or you can Email us at: info@bpsbioscience.com

Please visit our website at: www.bpsbioscience.com



6044 Cornerstone Court W, Ste E
San Diego, CA 92121
Tel: 1.858.829.3082
Fax: 1.858.481.8694
Email: info@bpsbioscience.com

Sequence:

MSPILGYWKIKGLVQPTRLLLEYLEEKYEEHLYERDEGDKWRNKKFELGLEFPNLPYYID
GDVKLTQSMAIIRYIADKHNMLGGCPKERAEISMLEGAVLDIRYGVSRAYSKDFETLKVDF
LSKLPPEMLKMFEDRLCHKTYLNGDHVTHPDFMLYDALDVVLYMDPMCLDAFPKLVCFKK
RIEAIQIDKYLKSSKYIAWPLQGQWQATFGGGDHPPKSDPMGHHHHHHGRRRRASVAAGI
LVPRGSPGLDGIYARGIQKSPGPQRERKSSSSSEDRNRMKTLGRRDSSDDWEIPDQG
ITVGQRIGSGSFGTVYKKGKWHGDVAVKMLNVTAPTPQQQLQAFKNEVGVLKTRHVNIL
LFMGYSTKPQLAIVTQWCEGSSLYHHLHIIETKFEMIKLIDIARQTAQGM DY LHAKSIIHR
DLKSNNIFLHEDLTVKIGDFGLATEKSRWSGSHQFEQLSGSILWMAPEVIRMQDKNPYS
FQSDVYAFGIVLYELMTGQLPYSNINNRDQIIFMVGRGYLSPDLSKVRSNCPKAMKRLM
AECLKKKRDERPLFPQILASIELLARSLPKIHRSASEPSLNRAGFQTEDFSLYACASPKT
PIQAGGYGAFPVH

OUR PRODUCTS ARE FOR RESEARCH USE ONLY. NOT FOR DIAGNOSTIC OR THERAPEUTIC USE.

To place your order, please contact us by Phone **1.858.829.3082** Fax **1.858.481.8694**
Or you can Email us at: info@bpsbioscience.com
Please visit our website at: www.bpsbioscience.com