



SZABO SCANDIC

Part of Europa Biosite

Produktinformation



Forschungsprodukte & Biochemikalien



Zellkultur & Verbrauchsmaterial



Diagnostik & molekulare Diagnostik



Laborgeräte & Service

Weitere Information auf den folgenden Seiten!
See the following pages for more information!



Lieferung & Zahlungsart

siehe unsere [Liefer- und Versandbedingungen](#)

Zuschläge

- Mindermengenzuschlag
- Trockeneiszuschlag
- Gefahrgutzuschlag
- Expressversand

SZABO-SCANDIC HandelsgmbH

Quellenstraße 110, A-1100 Wien

T. +43(0)1 489 3961-0

F. +43(0)1 489 3961-7

mail@szabo-scandic.com

www.szabo-scandic.com

[linkedin.com/company/szaboscandic](https://www.linkedin.com/company/szaboscandic) 

Data Sheet

RB Protein

Human, recombinant, N-terminal GST- tag

Catalog #: 40595

Lot #: 140820-1 **Conc.:** 1.76 mg/ml

Formulated in: 40mM Hepes pH 7.2,
130mM NaCl, 3mM DTT, and 20% glycerol

Stability: >6 months at -80°C. *Avoid freeze/thaw cycles. Storing diluted protein is not recommended, if necessary, use carrier protein (BSA 0.1 – 0.5%).*

References:

1. Hanahan, D. *et al.*, *Cell* **100**: 57-70 (2000).
2. Dahiya, A. *et al.*, *Molec. Cell* **8**: 557-568 (2001).

Description:

Human recombinant retinoblastoma-associated protein (RB) protein, also known as RB1, a.a. 773-928(end), with N-terminal GST-tag, GenBank Accession No. NM_000321, expressed in an *E. coli* expression system. MW=43.5 kDa.

Application:

Useful as a kinase substrate for kinase assays, or for western blotting.

Quality Assurance

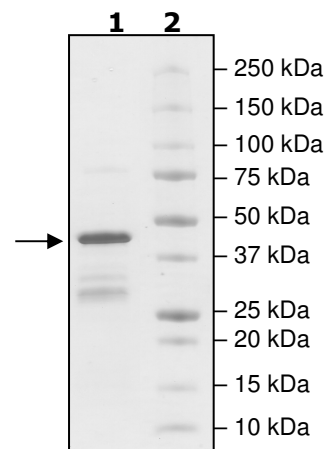
**4-20% SDS-PAGE
Coomassie staining**

Lane 1:
4 µg RB protein

Lane 2:
Protein Marker

MW: 43.5 kDa

Purity: ≥60%



OUR PRODUCTS ARE FOR RESEARCH USE ONLY. NOT FOR DIAGNOSTIC OR THERAPEUTIC USE.

To place your order, please contact us by Phone **1.858.829.3082** Fax **1.858.481.8694**

Or you can Email us at: info@bpsbioscience.com

Please visit our website at: www.bpsbioscience.com