



# SZABO SCANDIC

Part of Europa Biosite

## Produktinformation



Forschungsprodukte & Biochemikalien



Zellkultur & Verbrauchsmaterial



Diagnostik & molekulare Diagnostik



Laborgeräte & Service

Weitere Information auf den folgenden Seiten!  
See the following pages for more information!



### Lieferung & Zahlungsart

siehe unsere [Liefer- und Versandbedingungen](#)

### Zuschläge

- Mindermengenzuschlag
- Trockeneiszuschlag
- Gefahrgutzuschlag
- Expressversand

### SZABO-SCANDIC HandelsgmbH

Quellenstraße 110, A-1100 Wien

T. +43(0)1 489 3961-0

F. +43(0)1 489 3961-7

[mail@szabo-scandic.com](mailto:mail@szabo-scandic.com)

[www.szabo-scandic.com](http://www.szabo-scandic.com)

[linkedin.com/company/szaboscandic](https://www.linkedin.com/company/szaboscandic) 

## Data Sheet

### SPHK1, His-tag

Human, recombinant, N-terminal His-tag

**Catalog #:** 40610

**Lot #:** 190719-2      **Conc.:** 0.20 mg/ml

**Formulated in:** 40 mM Tris-HCl, pH 8.0, 110 mM NaCl, 2.2 mM KCl, 200 mM Imidazole, 3 mM DTT and 20% glycerol.

**Stability:** At least 6 months at  $-80^{\circ}\text{C}$ . *Avoid freeze/thaw cycles.*

**References:**

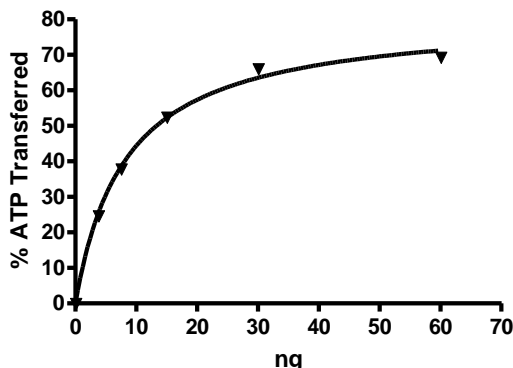
1. Delon, C., *et al.*, *J. Biol. Chem* **279** (43): 44763-44774 (2004)
2. Taha, TA *et al.*, *FASEB J.* **20**(3):482-4 (2005)

**Description:** Human Sphingosine kinase 1, also known as SphK1 and SPK1, GenBank Accession No. AF200328, a.a. 1-384 (full length), with N-terminal His-tag, expressed in a Baculovirus infected Sf9 cell expression system. MW=47 kDa.

**Specific Activity:** 1900 pmole/min/ $\mu\text{g}$ .  
**Assay Conditions:** Assay was done in Kinase buffer containing 1 mM DTT using 20  $\mu\text{M}$  Sphingosine and 20  $\mu\text{M}$  ATP. Reaction was done at  $30^{\circ}\text{C}$  for 35 min. Amount of ATP transferred was calculated using Kinase-Glo reagent (Promega).

**Application:** Useful for the study of enzyme kinetics, screening inhibitors, and selectivity profiling.

## Quality Assurance

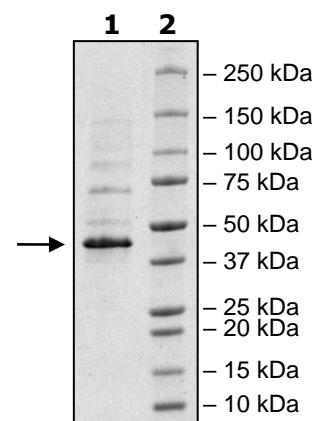


**4-20% SDS-PAGE  
 Coomassie staining**

**Lane 1:**  
 2 $\mu\text{g}$  SphK1  
**Lane 2:**  
 Protein Marker

**MW:** 47 kDa

**Purity:**  $\geq 80\%$



OUR PRODUCTS ARE FOR RESEARCH USE ONLY. NOT FOR DIAGNOSTIC OR THERAPEUTIC USE.

To place your order, please contact us by Phone **1.858.202.1401** Fax **1.858.481.8694**  
 Or you can Email us at: [info@bpsbioscience.com](mailto:info@bpsbioscience.com)  
 Please visit our website at: [www.bpsbioscience.com](http://www.bpsbioscience.com)