



# SZABO SCANDIC

Part of Europa Biosite

## Produktinformation



Forschungsprodukte & Biochemikalien



Zellkultur & Verbrauchsmaterial



Diagnostik & molekulare Diagnostik



Laborgeräte & Service

Weitere Information auf den folgenden Seiten!  
See the following pages for more information!



### Lieferung & Zahlungsart

siehe unsere [Liefer- und Versandbedingungen](#)

### Zuschläge

- Mindermengenzuschlag
- Trockeneiszuschlag
- Gefahrgutzuschlag
- Expressversand

### SZABO-SCANDIC HandelsgmbH

Quellenstraße 110, A-1100 Wien

T. +43(0)1 489 3961-0

F. +43(0)1 489 3961-7

[mail@szabo-scandic.com](mailto:mail@szabo-scandic.com)

[www.szabo-scandic.com](http://www.szabo-scandic.com)

[linkedin.com/company/szaboscandic](https://www.linkedin.com/company/szaboscandic) 

## Data Sheet

### p110 $\alpha$ /p85 $\alpha$

Human, recombinant, GST-tag  
**Catalog #:** 40621  
**Lot#:** 120308    **Conc.:** 0.32 mg/ml

**Formulated in:** 40 mM Tris-HCl, pH 8.0, 110 mM NaCl, 2.2 mM KCl, 16 mM glutathione, 20% glycerol, and 3 mM DTT.

**Stability:** >6 months at -80 °C

**References:**

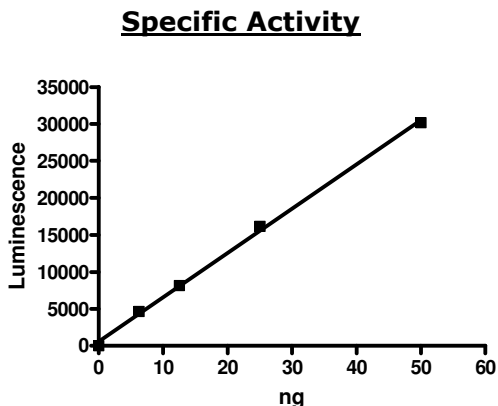
1. Vogt, PK *et al.*, *Virology* **344(1)**:131- (2006)
2. Bader, AG *et al.*, *Nat Rev Cancer* **5(12)**:921-9 (2005)

**Description:** Complex of N-terminal GST-tagged recombinant full-length human p110 $\alpha$  (GenBank Accession No. U79143), and recombinant full length, human p85 $\alpha$  (no tag) (GenBank Accession No. XM\_043865). Coexpressed in a Baculovirus infected Sf9 cell expression system. p110 $\alpha$  MW=151 kDa, p85 $\alpha$  MW=84 kDa.

**Specific Activity:** 880 pmol/min/ $\mu$ g  
 A 25  $\mu$ l kinase reaction is conducted in a buffer containing 40 mM Tris-HCl (pH 7.4), 20 mM MgCl<sub>2</sub>, 100  $\mu$ M ATP, 200  $\mu$ M PI:PS substrate (BPS #40560) and enzyme for 15 min at 30 °C. Then, incubated using 25  $\mu$ l ADP-Glo™ reagent for 45 minutes, followed by incubation with 50  $\mu$ l Kinase Detection reagent for 55 minutes (Promega Corporation, Madison, WI).

**Application:** Useful for the study of enzyme kinetics, screening inhibitors, and selectivity profiling.

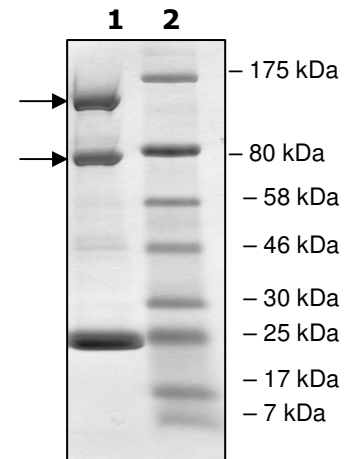
### **Quality Assurance**



**10% SDS-PAGE  
 Coomassie staining**

**Lane 1:**  
 3.2  $\mu$ g p110 $\alpha$ /p85 $\alpha$   
**Lane 2:**  
 Protein Marker

**MW:**  
 p110 $\alpha$ : 151 kDa  
 p85 $\alpha$ : 84 kDa  
**Purity:**  $\geq$ 52%



OUR PRODUCTS ARE FOR RESEARCH ONLY. NOT FOR DIAGNOSTIC OR THERAPEUTIC USE.  
 To place your order, please contact us by Phone **1.858.829.3082** Fax **1.858.481.8694**  
 Or you can Email us at: [info@bpsbioscience.com](mailto:info@bpsbioscience.com)  
 Please visit our website at: [www.bpsbioscience.com](http://www.bpsbioscience.com)