



SZABO SCANDIC

Part of Europa Biosite

Produktinformation



Forschungsprodukte & Biochemikalien



Zellkultur & Verbrauchsmaterial



Diagnostik & molekulare Diagnostik



Laborgeräte & Service

Weitere Information auf den folgenden Seiten!
See the following pages for more information!



Lieferung & Zahlungsart

siehe unsere [Liefer- und Versandbedingungen](#)

Zuschläge

- Mindermengenzuschlag
- Trockeneiszuschlag
- Gefahrgutzuschlag
- Expressversand

SZABO-SCANDIC HandelsgmbH

Quellenstraße 110, A-1100 Wien

T. +43(0)1 489 3961-0

F. +43(0)1 489 3961-7

mail@szabo-scandic.com

www.szabo-scandic.com

[linkedin.com/company/szaboscandic](https://www.linkedin.com/company/szaboscandic) 

Data Sheet

CRTAM, Fc-Fusion (IgG1), Avi-Tag

Human, Recombinant, C terminal Fc-Avi-Tag
Catalog #: 40686
Lot #: 160726-1 **Conc.:** 1.14 mg/ml

Formulated in: 8 mM Phosphate, pH 7.4,
 110 mM NaCl, 2.2 mM KCl, and 20% glycerol.

Stability: At least 6 months at -80°C . Avoid
 freeze/thaw cycles. Protein may be diluted to
 $\geq 100 \mu\text{g/ml}$ in PBS + glycerol and stored at -80°C .

References:

1. Boles, K., *et al.*, *Blood*. 2005 Aug;
106(3): 779-86.
2. Yeh, J., *et al.*, *Cell*. 2008 Jan;
132(5):846-859.

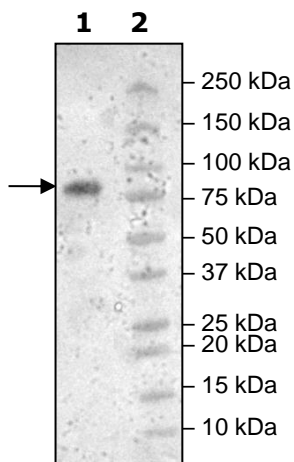
Description: Human CRTAM, also known as Cytotoxic and Regulatory T-Cell Molecule, GenBank Accession No. NM_019604, amino acids 18-286, expressed in a HEK293 expression system. This protein has a C-terminal Avi-Tag fused to the Fc region of Human IgG1. MW = 59 kDa.

Application: Useful as a positive control for western blot studies.

Quality Assurance

Western Blot

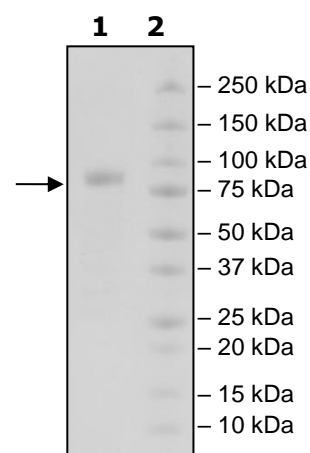
Lane 1:
 CRTAM
Lane 2:
 Protein Marker



**4-20% SDS-PAGE
 Coomassie staining**

Lane 1:
 3µg CRTAM
Lane 2:
 Protein Marker

MW: 59 kDa
Purity: $\geq 90\%$



OUR PRODUCTS ARE FOR RESEARCH USE ONLY. NOT FOR DIAGNOSTIC OR THERAPEUTIC USE.

To place your order, please contact us by Phone **1.858.829.3082** Fax **1.858.481.8694**
 Or you can Email us at: info@bpsbioscience.com
 Please visit our website at: www.bpsbioscience.com