



# SZABO SCANDIC

Part of Europa Biosite

## Produktinformation



Forschungsprodukte & Biochemikalien



Zellkultur & Verbrauchsmaterial



Diagnostik & molekulare Diagnostik



Laborgeräte & Service

Weitere Information auf den folgenden Seiten!  
See the following pages for more information!



### Lieferung & Zahlungsart

siehe unsere [Liefer- und Versandbedingungen](#)

### Zuschläge

- Mindermengenzuschlag
- Trockeneiszuschlag
- Gefahrgutzuschlag
- Expressversand

### SZABO-SCANDIC HandelsgmbH

Quellenstraße 110, A-1100 Wien

T. +43(0)1 489 3961-0

F. +43(0)1 489 3961-7

[mail@szabo-scandic.com](mailto:mail@szabo-scandic.com)

[www.szabo-scandic.com](http://www.szabo-scandic.com)

[linkedin.com/company/szaboscandic](https://www.linkedin.com/company/szaboscandic) 

## Data Sheet

### TGF $\beta$ R2

Human, recombinant, N-terminal GST-tag  
Catalog #: 40707  
Lot#: 140205-G1      Conc.: 0.11 mg/ml

**Formulated in:** 40 mM Tris pH 8, 110 mM NaCl, 2.2 mM KCl, 0.04% Tween-20, 3 mM DTT, and 20% glycerol

**Stability:** >6 months at  $-80^{\circ}\text{C}$ . Avoid freeze/thaw cycles.

**References:**

1. Lee J, *et al.*, *PLoS ONE*. 2013 **8(2)**:e57074.
2. Bhowmick, N.A, *et al.*, *Science*. 2004; **303(5659)**:848-851

**Description:**

Human transforming growth factor beta receptor 2 (TGF $\beta$ R2), also known as TGFBR2, TGFR-2, and TGF-Beta Receptor Type 2 GenBank Accession No. NM\_003242 (var2), a.a. 190-567 (end), with N-terminal GST-tag, MW=69.9 kDa, expressed in an Sf9 cell expression system.

**Application:**

Useful for studying protein binding, receptor activity, and screening small molecules.

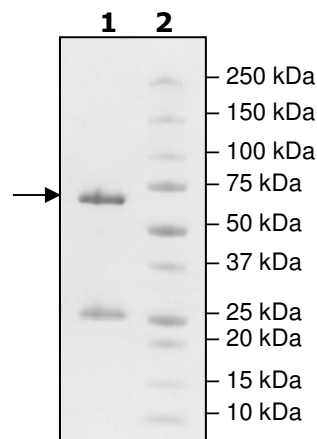
---

## **Quality Assurance**

**4-20% SDS-PAGE**

**Lane 1:**  
2.2  $\mu\text{g}$  TGF $\beta$ R2  
**Lane 2:**  
Protein Marker

**MW:** 69.9 kDa  
**Purity:**  $\geq 66\%$



OUR PRODUCTS ARE FOR RESEARCH USE ONLY. NOT FOR DIAGNOSTIC OR THERAPEUTIC USE.

To place your order, please contact us by Phone **1.858.829.3082** Fax **1.858.481.8694**  
Or you can Email us at: [info@bpsbioscience.com](mailto:info@bpsbioscience.com)  
Please visit our website at: [www.bpsbioscience.com](http://www.bpsbioscience.com)



6044 Cornerstone Court W, Ste E  
San Diego, CA 92121  
**Tel:** 1.858.829.3082  
**Fax:** 1.858.481.8694  
**Email:** [info@bpsbioscience.com](mailto:info@bpsbioscience.com)

**Protein Sequence:**

MSPILGYWKIKGLVQPTRLLEYLEEKYEEHLYERDEGDKWRNKKFELGLEFPN  
LPYYIDGDVKLTQSMAIRYIADKHNMLGGCPKERAEISMLEGAVLDIRYGVSRIA  
YSKDFETLKVDFLSKLPEMLKMFKDRLCHKTYLNGDHVTHPDFMLYDALDVVLY  
MDPMCLDAFPKLVCFKKRIEAIPQIDKYLKSSKYIAWPLQGQATFGGGDHLEV  
LFQGPLGSRVNRQQKLSSTWETGKTRKLMFSEHCAIILED RSDISSTCANNI  
NHNTELLPIELDTLVGKGRFAEVYKAKLKQNTSEQFETVAVKIFPYEYASWK  
TEKDIFSDINLKHENILQFLTAERKTELGKQYWLITAFHAKGNLQEYLTRHVIS  
WEDLRKLGSSLARGIAHLHSDHTPCGRPKMPIVHRDLKSSNILVKNDLTCCLC  
DFGLSLRLDPTLSVDDLANSQVGTARYMAPEVLESRMNLENVESFKQTDVY  
SMALVLWEMTSRCNAVGEVKDYEPFSGSKVREHPCVESMKDNVLRDRGRPE  
IPSFVLNHQGIQMCETLTECWDHDPEARLTAQCVAERFSELEHLDRLSGRS  
CSEKIPEDGSLNNTTK

Black: TGF $\beta$ R2 (a.a. 190-567)

Red: Flag Fusion

Blue: Linker including PreScission Protease Cleavage Site

OUR PRODUCTS ARE FOR RESEARCH USE ONLY. NOT FOR DIAGNOSTIC OR THERAPEUTIC USE.

To place your order, please contact us by Phone **1.858.829.3082** Fax **1.858.481.8694**

Or you can Email us at: [info@bpsbioscience.com](mailto:info@bpsbioscience.com)

Please visit our website at: [www.bpsbioscience.com](http://www.bpsbioscience.com)