



# SZABO SCANDIC

Part of Europa Biosite

## Produktinformation



Forschungsprodukte & Biochemikalien



Zellkultur & Verbrauchsmaterial



Diagnostik & molekulare Diagnostik



Laborgeräte & Service

Weitere Information auf den folgenden Seiten!  
See the following pages for more information!



### Lieferung & Zahlungsart

siehe unsere [Liefer- und Versandbedingungen](#)

### Zuschläge

- Mindermengenzuschlag
- Trockeneiszuschlag
- Gefahrgutzuschlag
- Expressversand

### SZABO-SCANDIC HandelsgmbH

Quellenstraße 110, A-1100 Wien

T. +43(0)1 489 3961-0

F. +43(0)1 489 3961-7

[mail@szabo-scandic.com](mailto:mail@szabo-scandic.com)

[www.szabo-scandic.com](http://www.szabo-scandic.com)

[linkedin.com/company/szaboscandic](https://www.linkedin.com/company/szaboscandic) 

## Data Sheet

### PP1A, Active

Human recombinant, with N-terminal GST-tag

**Catalog #:** 41106

**Lot #:** 141211

**Conc.:** 0.1 mg/ml

**Formulated in:** 50 mM Tris-HCl, pH 7.5, 150 mM NaCl, 10 mM glutathione, 0.1 mM EDTA, 0.1 mM PMSF, 0.25 mM DTT, 25% glycerol

**Stability:** At least 6 months at  $-80^{\circ}\text{C}$ . Avoid freeze/thaw cycles. Storing diluted enzyme is not recommended, if necessary, use carrier protein (BSA 0.1 – 0.5%).

**References:**

1. Cohen, P. *et al.*, *J. Biol. Chem.* 1989; **264**: 21435-21438.
2. Genoux, D. *et al.*, *Nature.* 2002; **418**: 970-975.

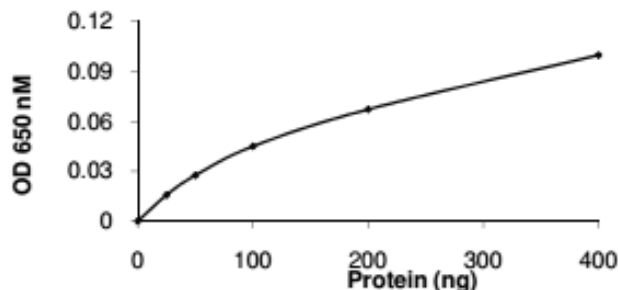
**Description:** Recombinant human serine/threonine-protein phosphatase PP1-alpha catalytic subunit (PP1A), also known as PPP1CA and PPP1A, GenBank Accession No. NM\_002708, full-length with an N-terminal GST tag and expressed in a baculovirus-infected Sf9 insect cell expression system. MW = 62 kDa.

**Specific Activity:** 228 pmol/min/ $\mu\text{g}$ .  
 Assay conditions: Assay was done using BIOMOL GREEN Reagent. Briefly, 5  $\mu\text{l}$  of varying amounts of PP1A was mixed with 10  $\mu\text{l}$  of buffer containing 0.2% 2-mercaptoethanol and 65 ng/ $\mu\text{l}$  BSA and 5  $\mu\text{l}$  of 1  $\mu\text{g}/\mu\text{l}$  Thr-phosphopeptide synthetic substrate (KRT(p)IRR). Reaction was incubated at  $37^{\circ}\text{C}$  for 15 min. before adding 100  $\mu\text{l}$  of BIOMOLE Green Reagent and incubating at room temp. for 30 min. Absorbance was read at 650 nm.

**Application:** Useful for studying enzyme kinetics, screening inhibitors, and selectivity profiling.

## Quality Assurance

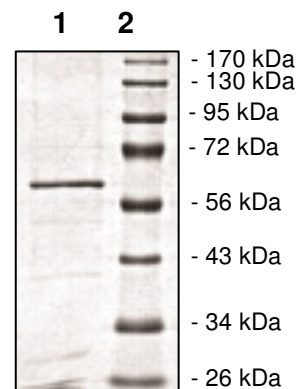
**Specific Activity**



**10% SDS-PAGE**  
**Coomassie staining**

**Lane 1:** PP1A  
**Lane 2:** Protein Marker

**MW:** 62 kDa  
**Purity:**  $\geq 75\%$



OUR PRODUCTS ARE FOR RESEARCH USE ONLY. NOT FOR DIAGNOSTIC OR THERAPEUTIC USE.

To place your order, please contact us by Phone **1.858.829.3082** Fax **1.858.481.8694**  
 Or you can Email us at: [info@bpsbioscience.com](mailto:info@bpsbioscience.com)  
 Please visit our website at: [www.bpsbioscience.com](http://www.bpsbioscience.com)