



# SZABO SCANDIC

Part of Europa Biosite

## Produktinformation



Forschungsprodukte & Biochemikalien



Zellkultur & Verbrauchsmaterial



Diagnostik & molekulare Diagnostik



Laborgeräte & Service

Weitere Information auf den folgenden Seiten!  
See the following pages for more information!



### Lieferung & Zahlungsart

siehe unsere [Liefer- und Versandbedingungen](#)

### Zuschläge

- Mindermengenzuschlag
- Trockeneiszuschlag
- Gefahrgutzuschlag
- Expressversand

### SZABO-SCANDIC HandelsgmbH

Quellenstraße 110, A-1100 Wien

T. +43(0)1 489 3961-0

F. +43(0)1 489 3961-7

[mail@szabo-scandic.com](mailto:mail@szabo-scandic.com)

[www.szabo-scandic.com](http://www.szabo-scandic.com)

[linkedin.com/company/szaboscandic](https://www.linkedin.com/company/szaboscandic) 

## Data Sheet

### PIM1, Active

Human recombinant, with N-terminal GST-tag

**Catalog #:** 41107

**Lot #:** 141211

**Conc.:** 0.1 mg/ml

**Formulated in:** 50 mM Tris-HCl, pH 7.5, 150 mM NaCl, 10 mM glutathione, 0.1 mM EDTA, 0.1 mM PMSF, 0.25 mM DTT, 25% glycerol

**Stability:** At least 6 months at  $-80^{\circ}\text{C}$ . Avoid freeze/thaw cycles. Storing diluted enzyme is not recommended, if necessary, use carrier protein (BSA 0.1 – 0.5%).

**References:**

1. Meeker, T.C., *et al.*, *J. Cell. Biochem.* 1987; **35(2)**: 105-112.
2. Friedmann, M. *et al.*, *Arch. Biochem Biophys.* 1992; **298(2)**: 594-601.

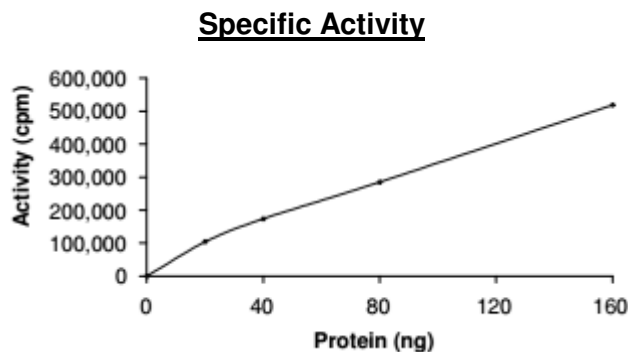
**Description:** Recombinant human serine/threonine-protein kinase PIM1 (PIM1), GenBank Accession No. NM\_002648, full-length with an N-terminal GST tag and expressed in a baculovirus-infected Sf9 insect cell expression system. MW = 62 kDa.

**Specific Activity:** 316 pmol/min/ $\mu\text{g}$ .

Assay conditions: Varying amounts of enzyme were incubated in 5 mM MOPS, pH 7.2, 2.5 mM  $\beta$ -glycerophosphate, 4 mM  $\text{MgCl}_2$ , 2.5 mM  $\text{MnCl}_2$ , 1 mM EGTA, 0.4 mM EDTA, 0.01 mM DTT, 0.05 mM ATP, 10  $\mu\text{g}$  of S6K synthetic peptide substrate, and 32  $\mu\text{Ci}$  of  $[^{33}\text{P}]\text{-ATP}$  was incubated at  $30^{\circ}\text{C}$  for 15 minutes. Then spot reaction on phosphocellulose paper, fix in 1% phosphoric acid, and assay with a scintillation counter.

**Application:** Useful for studying enzyme kinetics, screening inhibitors, and selectivity profiling.

## Quality Assurance



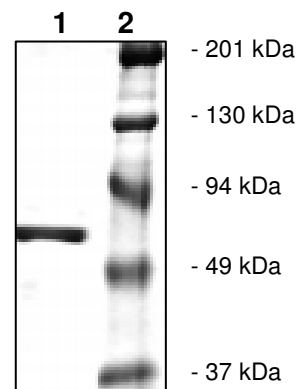
**10% SDS-PAGE  
Coomassie staining**

**Lane 1:**  
PIM1

**Lane 2:**  
Protein Marker

**MW:** 62 kDa

**Purity:**  $\geq 90\%$



OUR PRODUCTS ARE FOR RESEARCH USE ONLY. NOT FOR DIAGNOSTIC OR THERAPEUTIC USE.

To place your order, please contact us by Phone **1.858.829.3082** Fax **1.858.481.8694**

Or you can Email us at: [info@bpsbioscience.com](mailto:info@bpsbioscience.com)

Please visit our website at: [www.bpsbioscience.com](http://www.bpsbioscience.com)