



SZABO SCANDIC

Part of Europa Biosite

Produktinformation



Forschungsprodukte & Biochemikalien



Zellkultur & Verbrauchsmaterial



Diagnostik & molekulare Diagnostik



Laborgeräte & Service

Weitere Information auf den folgenden Seiten!
See the following pages for more information!



Lieferung & Zahlungsart

siehe unsere [Liefer- und Versandbedingungen](#)

Zuschläge

- Mindermengenzuschlag
- Trockeneiszuschlag
- Gefahrgutzuschlag
- Expressversand

SZABO-SCANDIC HandelsgmbH

Quellenstraße 110, A-1100 Wien

T. +43(0)1 489 3961-0

F. +43(0)1 489 3961-7

mail@szabo-scandic.com

www.szabo-scandic.com

[linkedin.com/company/szaboscandic](https://www.linkedin.com/company/szaboscandic) 

Data Sheet

CAMK2δ

Human recombinant, with N-terminal GST-tag

Catalog #: 41109

Lot #: 141211

Conc.: 0.1 mg/ml

Formulated in: 50 mM Tris-HCl, pH 7.5, 150 mM NaCl, 10 mM glutathione, 0.1 mM EDTA, 0.1 mM PMSF, 0.25 mM DTT, 25% glycerol

Stability: At least 6 months at -80°C . Avoid freeze/thaw cycles. Storing diluted enzyme is not recommended, if necessary, use carrier protein (BSA 0.1 – 0.5%).

References:

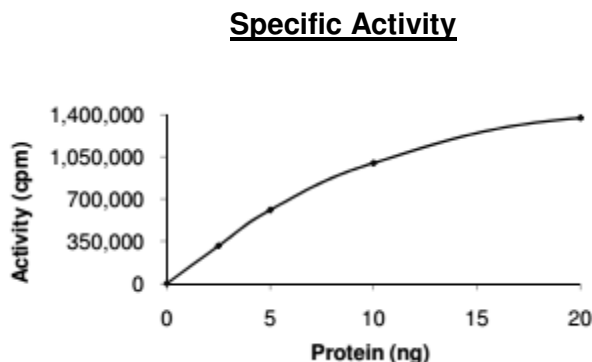
- Hoch, B., *et al.*, *Circ. Res.* 1999; **84**: 713-721.
- Zhu, W.-Z., *et al.*, *J. Clin. Invest.* 2003; **111**: 617-625.

Description: Recombinant human calcium/calmodulin-dependent protein kinase 2 delta (CAMK2δ), also known as CAMKIIδ, CAMK2d and CAMKIIδ, GenBank Accession No. NM_172115, full-length with an N-terminal GST tag and expressed in a baculovirus-infected Sf9 insect cell expression system. MW = 77 kDa.

Specific Activity: 5,860 pmol/min/μg.
 Assay conditions: Varying amounts of enzyme were incubated in 5 mM MOPS, pH 7.2, 2.5 mM β-glycerophosphate, 4 mM MgCl₂, 2.5 mM MnCl₂, 1 mM EGTA, 0.4 mM EDTA, 0.01 mM DTT, 0.05 mM ATP, 7.5 μg of Autocamide 2 synthetic peptide substrate, Ca²⁺/Calmodulin solution, and 32 μCi of [³³P]-ATP was incubated at 30°C for 15 minutes. Then spot reaction on phosphocellulose paper, fix in 1% phosphoric acid, and assay with a scintillation counter.

Application: Useful for studying enzyme kinetics, screening inhibitors, and selectivity profiling.

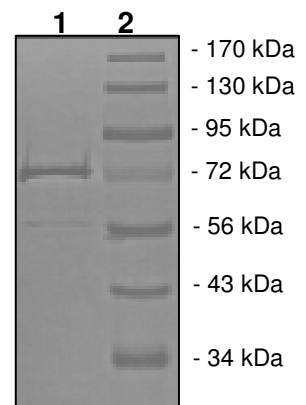
Quality Assurance



10% SDS-PAGE
Coomassie staining

Lane 1: CAMK2δ
Lane 2: Protein Marker

MW: 77 kDa
Purity: ≥85%



OUR PRODUCTS ARE FOR RESEARCH USE ONLY. NOT FOR DIAGNOSTIC OR THERAPEUTIC USE.

To place your order, please contact us by Phone **1.858.829.3082** Fax **1.858.481.8694**
 Or you can Email us at: info@bpsbioscience.com
 Please visit our website at: www.bpsbioscience.com