



# SZABO SCANDIC

Part of Europa Biosite

## Produktinformation



Forschungsprodukte & Biochemikalien



Zellkultur & Verbrauchsmaterial



Diagnostik & molekulare Diagnostik



Laborgeräte & Service

Weitere Information auf den folgenden Seiten!  
See the following pages for more information!



### Lieferung & Zahlungsart

siehe unsere [Liefer- und Versandbedingungen](#)

### Zuschläge

- Mindermengenzuschlag
- Trockeneiszuschlag
- Gefahrgutzuschlag
- Expressversand

### SZABO-SCANDIC HandelsgmbH

Quellenstraße 110, A-1100 Wien

T. +43(0)1 489 3961-0

F. +43(0)1 489 3961-7

[mail@szabo-scandic.com](mailto:mail@szabo-scandic.com)

[www.szabo-scandic.com](http://www.szabo-scandic.com)

[linkedin.com/company/szaboscandic](https://www.linkedin.com/company/szaboscandic) 

## Data Sheet

### RHEB, His-tag

Human, recombinant, N-terminal His-tag

**Catalog #:** 45100

**Lot #:** 150624-G2     **Conc.:** 1.11 mg/ml

**Formulated in:** 40 mM Tris-HCl, pH 8.0,  
110 mM NaCl, 2.2 mM KCl, 3 mM DTT,  
and 20% glycerol.

**Stability:** At least 6 months at  $-80^{\circ}\text{C}$ . *Avoid freeze/thaw cycles. Storing undiluted enzyme is not recommended, if necessary, use carrier protein (BSA 0.1 – 0.5%).*

**References:**

1. Karbowiczek, M. *et al. Biol. Chem.* **281** (35), 25447-25456 (2006)
2. Buerger, C. *et al. Biochem. Biophys. Res. Commun.* **344** (3), 869-880 (2006)

**Description:**

Human Rheb (GenBank Accession No. NM\_005614), full length with N-terminal His-tag, MW=23 kDa, expressed in a Baculovirus-infected Sf9 cell expression system.

**Application:**

Useful for the study of biochemical function.

## Quality Assurance

**4-20% SDS-PAGE  
Coomassie staining**

**Lane 1:**

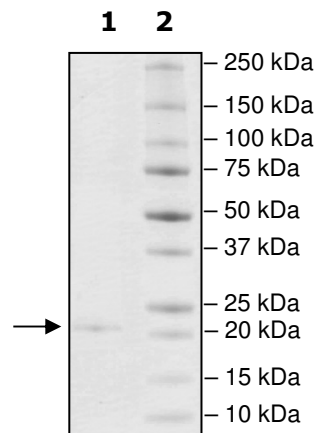
2.2  $\mu\text{g}$  RHEB

**Lane 2:**

Protein Marker

**MW:** 23 kDa

**Purity:**  $\geq 90\%$



OUR PRODUCTS ARE FOR RESEARCH USE ONLY. NOT FOR DIAGNOSTIC OR THERAPEUTIC USE.

To place your order, please contact us by Phone **1.858.829.3082** Fax **1.858.481.8694**

Or you can Email us at: [info@bpsbioscience.com](mailto:info@bpsbioscience.com)

Please visit our website at: [www.bpsbioscience.com](http://www.bpsbioscience.com)