



SZABO SCANDIC

Part of Europa Biosite

Produktinformation



Forschungsprodukte & Biochemikalien



Zellkultur & Verbrauchsmaterial



Diagnostik & molekulare Diagnostik



Laborgeräte & Service

Weitere Information auf den folgenden Seiten!
See the following pages for more information!



Lieferung & Zahlungsart

siehe unsere [Liefer- und Versandbedingungen](#)

Zuschläge

- Mindermengenzuschlag
- Trockeneiszuschlag
- Gefahrgutzuschlag
- Expressversand

SZABO-SCANDIC HandelsgmbH

Quellenstraße 110, A-1100 Wien

T. +43(0)1 489 3961-0

F. +43(0)1 489 3961-7

mail@szabo-scandic.com

www.szabo-scandic.com

[linkedin.com/company/szaboscandic](https://www.linkedin.com/company/szaboscandic) 

Data Sheet

HDAC 2

Human, recombinant, C-terminal His-tag

Catalog #: 50002

Lot#: 110223G **Conc.:** 0.4 mg/ml

Formulated in: 40 mM Tris pH 8.0, 110 mM NaCl, 2.2 mM KCl, 0.04% Tween-20, 20% glycerol

Stability: >6 months at -80 °C

References:

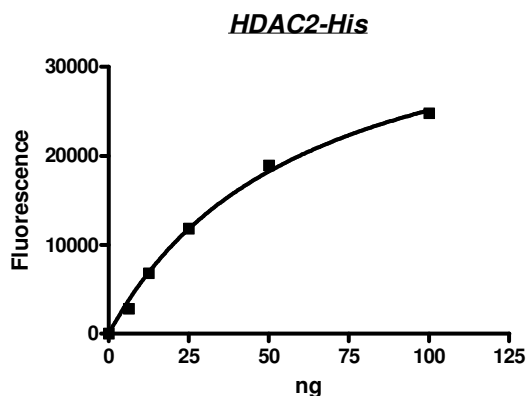
1. Yang, W.M. *et al.*, *Proc. Natl. Acad. Sci. U.S.A.* **93 (23)**, 12845-12850 (1996)
2. Mungall, A.J. *et al.*, *Nature* **425 (6960)**, 805-811 (2003)

Description: Human HDAC2 (GenBank Accession No. Q92769), full length with C-terminal His-tag, MW= 60 kDa, expressed in baculovirus expression system.

Specific Activity: 675 pmol/min/μg. Assay condition: 50 mM of Tris-HCl (pH 8.0), 137 mM of NaCl, 2.7 mM of KCl, 1 mM of MgCl₂, 5 μg BSA, 20 μM substrate (BPS catalog #50037), and HDAC2, at 37°C, 30 min followed by incubation with HDAC Developer (#50030) for 15 min at RT.

Application: Useful for the study of enzyme kinetics. screening inhibitors.

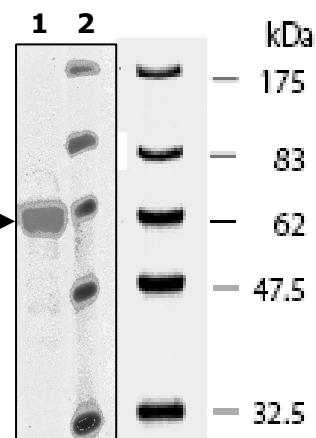
Quality Assurance



**10% SDS-PAGE
 Coomassie staining**

Lane 1:
 5 μg HDAC2
Lane 2:
 Protein Marker

MW: 60 kDa.
Purity: ≥90%



OUR PRODUCTS ARE FOR RESEARCH USE ONLY. NOT FOR DIAGNOSTIC OR THERAPEUTIC USE.

To place your order, please contact us by Phone **1.858.829.3082** Fax **1.858.481.8694**
 Or you can Email us at: info@bpsbioscience.com
 Please visit our website at: www.bpsbioscience.com