



# SZABO SCANDIC

Part of Europa Biosite

## Produktinformation



Forschungsprodukte & Biochemikalien



Zellkultur & Verbrauchsmaterial



Diagnostik & molekulare Diagnostik



Laborgeräte & Service

Weitere Information auf den folgenden Seiten!  
See the following pages for more information!



### Lieferung & Zahlungsart

siehe unsere [Liefer- und Versandbedingungen](#)

### Zuschläge

- Mindermengenzuschlag
- Trockeneiszuschlag
- Gefahrgutzuschlag
- Expressversand

### SZABO-SCANDIC HandelsgmbH

Quellenstraße 110, A-1100 Wien

T. +43(0)1 489 3961-0

F. +43(0)1 489 3961-7

[mail@szabo-scandic.com](mailto:mail@szabo-scandic.com)

[www.szabo-scandic.com](http://www.szabo-scandic.com)

[linkedin.com/company/szaboscandic](https://www.linkedin.com/company/szaboscandic) 

## Data Sheet

### Sirtuin1, GST-Tag

Human, Recombinant, N-terminal GST-tag  
**Catalog #:** 50012  
**Lot #:** 190703                      **Conc.:** 1.1 mg/ml

**Formulated in:** 40 mM Tris-HCl pH 8.0, 110 mM NaCl, 2.2 mM KCl, 20 mM glutathione and 20% glycerol.

**Stability:** At least 6 months at  $-80^{\circ}\text{C}$ . Avoid freeze/thaw cycles.

**References:**

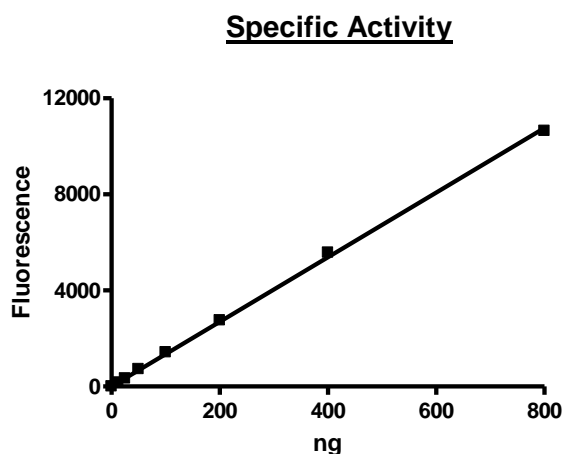
1. Kolthur-Seetharam, U. *et al.* (2006) *Cell Cycle* **5**, 873-877.
2. Solomon, J.M. *et al.* (2006) *Mol. Cell. Biol.* **26**, 28-38.

**Description:** Human Sirtuin 1, also known as SIRT1, GenBank Accession No. NM\_012238, a.a. 193-741 with N-terminal GST tag, expressed in an *E. coli* expression system. MW 88 kDa.

**Specific Activity:**  $\geq 20$  pmol/min/ $\mu\text{g}$ .  
 Assay conditions: 25 mM Tris/HCl, pH 8.0, 137 mM NaCl, 2.7 mM KCl, 1 mM  $\text{MgCl}_2$ , and 0.1 mg/ml BSA, 20  $\mu\text{M}$  BPS HDAC substrate 1 (Catalog #50032), 500  $\mu\text{M}$   $\text{NAD}^+$  and Sirtuin 1 (12.5 – 800 ng). Incubation condition: 30 min at  $37^{\circ}\text{C}$  followed by developing for 15 min at room temperature.

**Application:** Useful for the study of enzyme kinetics, screening inhibitors, and selectivity profiling.

### Quality Assurance

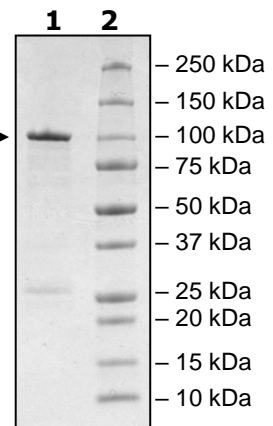


**4-20% SDS-PAGE**  
**Coomassie staining**

**Lane 1:** →  
 3 $\mu\text{g}$  SIRT1  
**Lane 2:**  
 Protein Marker

**MW:** 88 kDa

**Purity:**  $\geq 84\%$



OUR PRODUCTS ARE FOR RESEARCH USE ONLY. NOT FOR DIAGNOSTIC OR THERAPEUTIC USE.

To place your order, please contact us by Phone **1.858.202.1401** Fax **1.858.481.8694**  
 Or you can Email us at: [info@bpsbioscience.com](mailto:info@bpsbioscience.com)  
 Please visit our website at: [www.bpsbioscience.com](http://www.bpsbioscience.com)