



SZABO SCANDIC

Part of Europa Biosite

Produktinformation



Forschungsprodukte & Biochemikalien



Zellkultur & Verbrauchsmaterial



Diagnostik & molekulare Diagnostik



Laborgeräte & Service

Weitere Information auf den folgenden Seiten!
See the following pages for more information!



Lieferung & Zahlungsart

siehe unsere [Liefer- und Versandbedingungen](#)

Zuschläge

- Mindermengenzuschlag
- Trockeneiszuschlag
- Gefahrgutzuschlag
- Expressversand

SZABO-SCANDIC HandelsgmbH

Quellenstraße 110, A-1100 Wien

T. +43(0)1 489 3961-0

F. +43(0)1 489 3961-7

mail@szabo-scandic.com

www.szabo-scandic.com

[linkedin.com/company/szaboscandic](https://www.linkedin.com/company/szaboscandic) 

Data Sheet

HDAC 6, FLAG-tag

Human, recombinant, C-terminal FLAG-tag

Catalog #: 50056

Lot #: 180206-4 **Conc.:** 0.40 mg/ml

Formulated in: 20 mM Hepes pH 7.4, 120 mM NaCl, 100 ng/μl FLAG peptide, 20% glycerol

Stability: At least 6 months at -80°C. Avoid freeze/thaw cycles.

Reference:

1. Strausberg, R.L. *et al.*, *Proc. Natl. Acad. Sci. U.S.A.* **99** (26), 16899-16903 (2002).

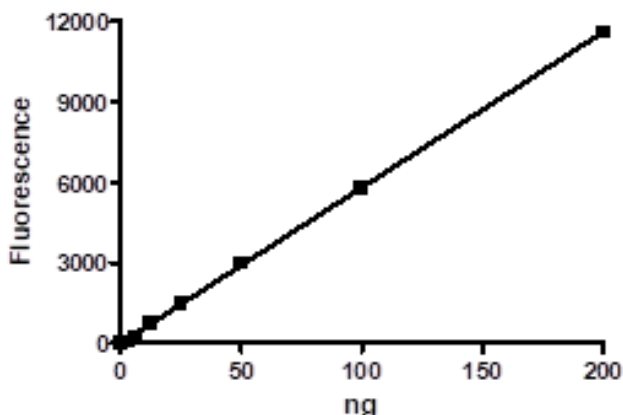
Description: Human HDAC6 also known as Histone Deacetylase 6, Protein Phosphatase 1, Regulatory Subunit 90, and JM21, GenBank Accession No. NM_006044, a.a 1-1215(end) with C-terminal FLAG-tag, expressed in baculovirus expression system, MW = 132 kDa.

Specific Activity: ≥ 146 pmole/min/μg.
 Assay conditions: 25 mM Tris/HCl, pH 8.0, 137 mM NaCl, 2.7 mM KCl, 1 mM MgCl₂, and 0.1 mg/ml BSA, 20 μM BPS HDAC substrate 3 (Catalog #50037), and HDAC6 (3.1 – 200ng). Incubation condition: 30 min at 37°C followed by developing for 15 min at room temperature.

Application: Useful for the study of enzyme kinetics, screening inhibitors, and selectivity profiling.

Quality Assurance

Specific Activity



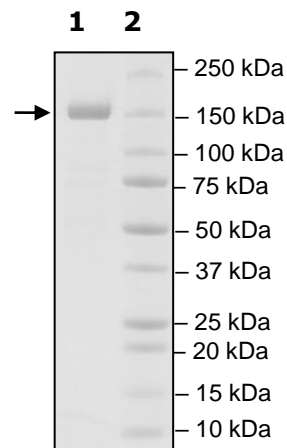
4-20% SDS-PAGE
Coomassie staining

Lane 1:
 HDAC6

Lane 2:
 Protein Marker

Purity: ≥90%

MW:
 132 kDa



OUR PRODUCTS ARE FOR RESEARCH USE ONLY. NOT FOR DIAGNOSTIC OR THERAPEUTIC USE.

To place your order, please contact us by Phone **1.858.202.1401** Fax **1.858.481.8694**
 Or you can Email us at: info@bpsbioscience.com
 Please visit our website at: www.bpsbioscience.com