



SZABO SCANDIC

Part of Europa Biosite

Produktinformation



Forschungsprodukte & Biochemikalien



Zellkultur & Verbrauchsmaterial



Diagnostik & molekulare Diagnostik



Laborgeräte & Service

Weitere Information auf den folgenden Seiten!
See the following pages for more information!



Lieferung & Zahlungsart

siehe unsere [Liefer- und Versandbedingungen](#)

Zuschläge

- Mindermengenzuschlag
- Trockeneiszuschlag
- Gefahrgutzuschlag
- Expressversand

SZABO-SCANDIC HandelsgmbH

Quellenstraße 110, A-1100 Wien

T. +43(0)1 489 3961-0

F. +43(0)1 489 3961-7

mail@szabo-scandic.com

www.szabo-scandic.com

[linkedin.com/company/szaboscandic](https://www.linkedin.com/company/szaboscandic) 

Data Sheet

ATAT1 (2 – 224)

Human, recombinant, N-terminal GST-tag
Catalog #: 50072
Lot#: 120410-RT Conc.: 0.14 mg/ml

Formulated in: 40 mM Tris-HCl, pH 8.0,
110 mM NaCl, 2.2 mM KCl, 16 mM
Glutathione, 20% glycerol, and 3 mM DTT.

Stability: >6 months at –80 °C

References:

1. Akella, J.S., *et al.*, *Nature*. 2010 Sep 9;
467(7312): 218 – 222.
2. Lloyd, R.A., *et al.*, *Anal. Biochem.* 1994
Jan ; **216(1)** : 42 -46.

Description:

Human alpha tubulin acetyltransferase 1, or ATAT1, GenBank Accession No. NM_001031722 (var1), a.a. 2 – 224, with N-terminal GST-tag, MW=52 kDa, expressed in an *E. coli* expression system.

Application:

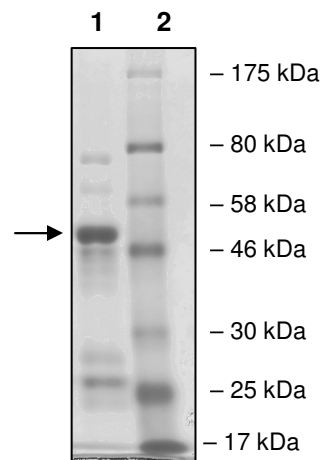
Suitable for protein binding studies as an immunogen or as a protein standard.

Quality Assurance

**10% SDS-PAGE
Coomassie staining**

Lane 1:
2.1 µg ATAT1
Lane 2:
Protein Marker

MW: 52 kDa
Purity: ≥40%



OUR PRODUCTS ARE FOR RESEARCH USE ONLY. NOT FOR DIAGNOSTIC OR THERAPEUTIC USE.

To place your order, please contact us by Phone **1.858.829.3082** Fax **1.858.481.8694**
Or you can Email us at: info@bpsbioscience.com
Please visit our website at: www.bpsbioscience.com



6044 Cornerstone Court W, Ste E
San Diego, CA 92121
Tel: 1.858.829.3082
Fax: 1.858.481.8694
Email: info@bpsbioscience.com

Protein Sequence:

MSPILGYWKIKGLVQPTRLLLEYLEEKYEEHLYERDEGDKWRNKKFELGLEFPNLPYYI
DGDVKLTQSMARIYIADKHNMLGGCPKERAIEISMLEGAVLDIRYGVSRAYSDFETLK
VDFLSKLPEMLKMFEDRLCHKTYLNGDHVTHPDFMLYDALDVVLYMDPMCLDAFPKLV
CFKKRIEAIQIDKYLKSSKYIAWPLQGQATFGGGDHPPKSDLEVLVFGGPLGSWLTW
PFCFLTITLREEGVCHLESVDLQQQIMTIIDELGKASAKAQNLSAPITSASRMQSNRHV
VYILKDSSARPAGKGAIGFIKVGKLVLDLDDREAHNEVEPLCILDYIHESVQRHGHG
RELFQYMLQKERVEPHQLAIDRPSQKLLKFLNKHYNLETTVPQVNNFVIFEGFFAHQH
RPPAPSLRATRHSRAAAVDPTPAAPARKLPPKRAEGDIKPYIS

OUR PRODUCTS ARE FOR RESEARCH USE ONLY. NOT FOR DIAGNOSTIC OR THERAPEUTIC USE.

To place your order, please contact us by Phone **1.858.829.3082** Fax **1.858.481.8694**
Or you can Email us at: info@bpsbioscience.com
Please visit our website at: www.bpsbioscience.com