



# SZABO SCANDIC

Part of Europa Biosite

## Produktinformation



Forschungsprodukte & Biochemikalien



Zellkultur & Verbrauchsmaterial



Diagnostik & molekulare Diagnostik



Laborgeräte & Service

Weitere Information auf den folgenden Seiten!  
See the following pages for more information!



### Lieferung & Zahlungsart

siehe unsere [Liefer- und Versandbedingungen](#)

### Zuschläge

- Mindermengenzuschlag
- Trockeneiszuschlag
- Gefahrgutzuschlag
- Expressversand

### SZABO-SCANDIC HandelsgmbH

Quellenstraße 110, A-1100 Wien

T. +43(0)1 489 3961-0

F. +43(0)1 489 3961-7

[mail@szabo-scandic.com](mailto:mail@szabo-scandic.com)

[www.szabo-scandic.com](http://www.szabo-scandic.com)

[linkedin.com/company/szaboscandic](https://www.linkedin.com/company/szaboscandic)

## Data Sheet

### LSD1 (KDM1A, AOF2)

Human, recombinant

**Catalog #:** 50097

**Lot#:** 160323-C **Conc.:** 0.19 mg/ml

**Formulated in:** 100mM  
Na<sub>2</sub>HPO<sub>4</sub>/NaH<sub>2</sub>PO<sub>4</sub>, pH 7.4

**Stability:** At least 6 months at -80°C.  
Avoid freeze/thaw cycles.

**References:**

1. Lan, F. *et al.*, *Nature* **448** (7154), 718-722 (2007)
2. Forneris, F. *et al.*, *J. Biol. Chem.* **282** (28), 20070-20074 (2007)

**Description:** Human LSD1, also known as KDM1A (lysine (K)-specific demethylase 1A) or AOF2, amine oxidase (flavin containing domain 2), GenBank Accession No. NM\_015013, a.a. 158-end, expressed in *E. coli* expression system. MW=78 kDa.

**Specific Activity:** 20.6 pmol/min/μg  
Assay conditions: Assay was performed according to BPS catalog #50109 with LSD1 titrated from 400 ng/rxn – 0 ng/rxn.

**Application:** Useful for the study of enzyme kinetics, screening inhibitors, and selectivity profiling.

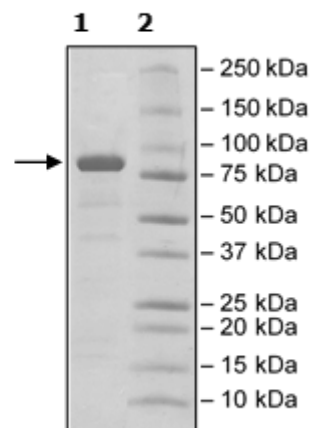
## Quality Assurance

Specific Activity

4-20% SDS-PAGE  
Coomassie staining

**Lane 1:**  
2 μg LSD1  
**Lane 2:**  
Protein Marker

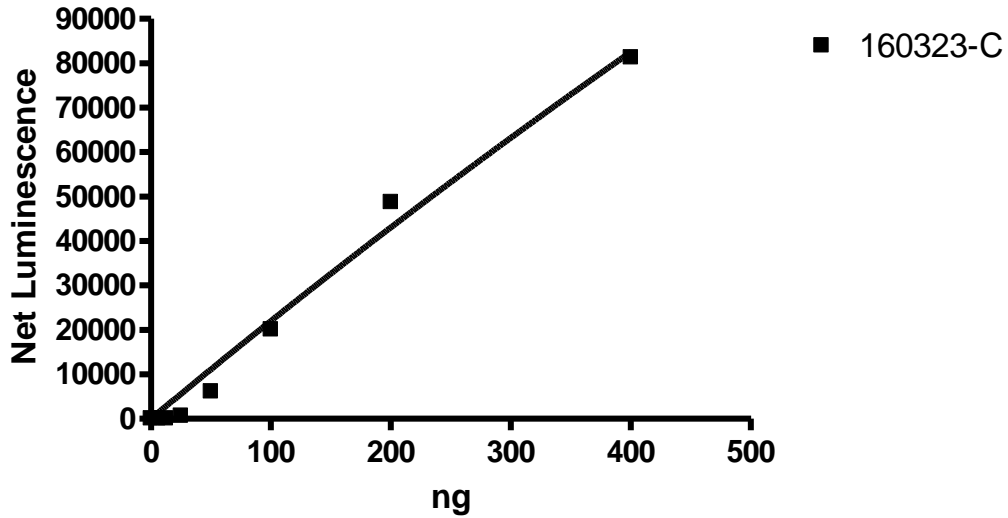
**MW:** 78 kDa  
**Purity:** 90%





6042 Cornerstone Court West, Suite B  
San Diego, CA 92121  
Tel: 1.858.202.1401  
Fax: 1.858.481.8694  
Email: [info@bpsbioscience.com](mailto:info@bpsbioscience.com)

### LSD1 (KDM1A), Variant 2



OUR PRODUCTS ARE FOR RESEARCH USE ONLY. NOT FOR DIAGNOSTIC OR THERAPEUTIC USE.  
To place your order, please contact us by Phone **1.858.202.1401** Fax **1.858.481.8694**  
Or you can Email us at: [info@bpsbioscience.com](mailto:info@bpsbioscience.com)  
Please visit our website at: [www.bpsbioscience.com](http://www.bpsbioscience.com)