



SZABO SCANDIC

Part of Europa Biosite

Produktinformation



Forschungsprodukte & Biochemikalien



Zellkultur & Verbrauchsmaterial



Diagnostik & molekulare Diagnostik



Laborgeräte & Service

Weitere Information auf den folgenden Seiten!
See the following pages for more information!



Lieferung & Zahlungsart

siehe unsere [Liefer- und Versandbedingungen](#)

Zuschläge

- Mindermengenzuschlag
- Trockeneiszuschlag
- Gefahrgutzuschlag
- Expressversand

SZABO-SCANDIC HandelsgmbH

Quellenstraße 110, A-1100 Wien

T. +43(0)1 489 3961-0

F. +43(0)1 489 3961-7

mail@szabo-scandic.com

www.szabo-scandic.com

[linkedin.com/company/szaboscandic](https://www.linkedin.com/company/szaboscandic) 

Data Sheet

LSD1 (KDM1, AOF2), GST-tag

Human, Recombinant, N-terminal GST-tag
Catalog #: 50100
Lot #: 180807 **Conc.:** 1.28 mg/ml

Formulated in:

50mm Na₂HPO₄/NaH₂PO₄, pH 7.4

Stability: At least 6 months at -80°C. Avoid freeze/thaw cycles. Storing diluted enzyme is not recommended, if necessary, use carrier protein (BSA 0.1 – 0.5%).

References:

1. Lan, F. *et al.*, *Nature* **448 (7154)**, 718-722 (2007)
2. Forneris, F. *et al.*, *J. Biol. Chem.* **282 (28)**, 20070-20074 (2007)

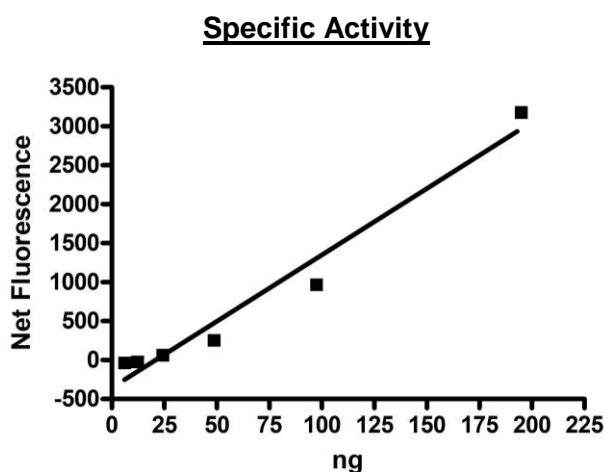
Description: Human LSD1 [also known as KDM1A (lysine (K)-specific demethylase 1A) or AOF2, amine oxidase (flavin containing) domain 2)] GenBank Accession No. NM_015013, amino acids 158-852 (end) with N-terminal GST tag, MW=104 kDa, expressed in *E. coli* expression system.

Specific Activity: ≥7.0 pmole/min/μg.

Assay conditions: Assay was done according to LSD1 Fluorescent Assay Kit #50106. Wells contained 50 mM Monobasic/Dibasic Phosphate Buffer pH 7.4, 20 μM H₃, 1-21 (2MeK₄), and varying amounts of LSD1 incubated for 30 minutes at room temperature. Followed by addition of 0.1 mM amplex red and 0.2 U/ml peroxidase. Fluorescence intensity measure at excitation 530 nm and emission 590 nm.

Applications: Useful for the study of enzyme kinetics, screening inhibitors, and selectivity profiling.

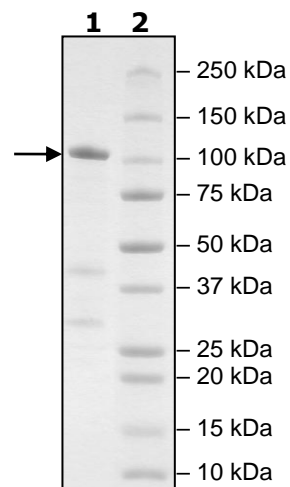
Quality Assurance



**4-20% SDS-PAGE
Coomassie staining**

Lane 1:
2 μg LSD1
Lane 2:
Protein Marker

MW: 104 kDa
Purity: ≥70%



OUR PRODUCTS ARE FOR RESEARCH USE ONLY. NOT FOR DIAGNOSTIC OR THERAPEUTIC USE.
 To place your order, please contact us by Phone **1.858.829.3082** Fax **1.858.481.8694**
 Or you can Email us at: info@bpsbioscience.com
 Please visit our website at: www.bpsbioscience.com