



SZABO SCANDIC

Part of Europa Biosite

Produktinformation



Forschungsprodukte & Biochemikalien



Zellkultur & Verbrauchsmaterial



Diagnostik & molekulare Diagnostik



Laborgeräte & Service

Weitere Information auf den folgenden Seiten!
See the following pages for more information!



Lieferung & Zahlungsart

siehe unsere [Liefer- und Versandbedingungen](#)

Zuschläge

- Mindermengenzuschlag
- Trockeneiszuschlag
- Gefahrgutzuschlag
- Expressversand

SZABO-SCANDIC HandelsgmbH

Quellenstraße 110, A-1100 Wien

T. +43(0)1 489 3961-0

F. +43(0)1 489 3961-7

mail@szabo-scandic.com

www.szabo-scandic.com

[linkedin.com/company/szaboscandic](https://www.linkedin.com/company/szaboscandic) 

Data Sheet

JMJD2B (KDM4B), FLAG-tag

Human, Recombinant, C-terminal FLAG-tag
Catalog #: 50104
Lot #: 170309-1 **Conc.:** 0.16 mg/ml

Formulated in: 40 mM Tris-HCl, pH 8.0, 110 mM NaCl, 2.2 mM KCl, 80 µg/mL FLAG peptide and 20% glycerol

Stability: At least 6 months at -80°C. Avoid freeze/thaw cycles. Storing diluted enzyme is not recommended, if necessary, use carrier protein (BSA 0.1 – 0.5%).

References:

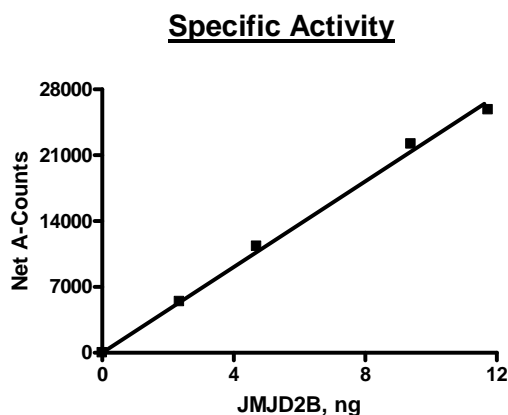
1. Fodor, B.D., *et al.* (2006). *Genes Dev.* **20(12)**: 1557–1562.
2. Beyer S., *et al.* (2008). *J. Biol. Chem.* **283(52)**:36542-52.

Description: Human JMJD2B, also known as JHDM3B and KDM4B (GenBank Accession No. NM_015015) (amino-acids 1-500) with C-terminal FLAG tag, MW=57 kDa, expressed in Sf9 cells using a Baculovirus expression system.

Specific Activity: ≥0.23 pmol/min/µg.
 Assay conditions: 10µl reaction mix containing assay buffer with 20 mM HEPES (pH 7.4), 50 mM NaCl, 1mM TCEP, 500 µM α-ketoglutarate, 25 µM iron, 2mM ascorbic acid, 0.01% Tween-20, 0.5 µM biotinylated peptide substrate, and JMJD2B (2 – 10ng) added to the wells. Add antibody against dimethylated K₉ peptide. Incubate for 30 min, then Streptavidin-conjugated secondary antibody followed by Alpha Screening detection.

Application: Useful for the study of enzyme kinetics, screening inhibitors, and selectivity profiling.

Quality Assurance



4-20% SDS-PAGE
Coomassie staining

Lane 1:
2 µg JMJD2B
Lane 2:
Protein Marker

MW: 57 kDa
Purity: ≥61%

