



SZABO SCANDIC

Part of Europa Biosite

Produktinformation



Forschungsprodukte & Biochemikalien



Zellkultur & Verbrauchsmaterial



Diagnostik & molekulare Diagnostik



Laborgeräte & Service

Weitere Information auf den folgenden Seiten!
See the following pages for more information!



Lieferung & Zahlungsart

siehe unsere [Liefer- und Versandbedingungen](#)

Zuschläge

- Mindermengenzuschlag
- Trockeneiszuschlag
- Gefahrgutzuschlag
- Expressversand

SZABO-SCANDIC HandelsgmbH

Quellenstraße 110, A-1100 Wien

T. +43(0)1 489 3961-0

F. +43(0)1 489 3961-7

mail@szabo-scandic.com

www.szabo-scandic.com

[linkedin.com/company/szaboscandic](https://www.linkedin.com/company/szaboscandic) 

Data Sheet

JARID1C (KDM5C)

Human recombinant, with N-terminal FLAG-tag and His-tag

Catalog #: 50112

Lot #: 140709 **Conc.** 1.3 mg/ml

Formulated in: 40 mM Tris-HCl, 110 mM NaCl, 2.2 mM KCl, 0.04% Tween-20, 80 µg/mL and 20% glycerol.

Stability: At least 6 months at -80°C . Avoid freeze/thaw cycles. Storing diluted enzyme is not recommended, if necessary, use carrier protein (BSA 0.1 – 0.5%).

References:

1. Xu, J., *et al.* (2008). *PLoS One* **3(7)**:e2553.
2. Iwase, S., *et al.* (2007). *Cell* **128(6)**:1077-88.

Description: Human JARID1C, also known as SMCX (Smcy homolog, X-linked), KDM5C, or XE169, GenBank Accession No. NM_004187), full length [a.a. 2-1560(end)] with N-terminal FLAG- and His-tags, MW= 181 kDa, expressed in Sf9 cells via a baculovirus expression system.

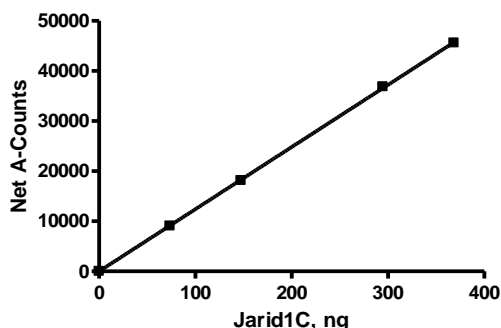
Specific Activity: 0.14 pmol/min/µg.

Assay Conditions: Assay was conducted using AlphaScreen® technology using BPS JARID1C Homogeneous Assay Kit, Catalog #50511. JARID1C enzyme is incubated with biotinylated histone H3 peptide substrate in JARID assay buffer in a 10 µl reaction for 2 hours at RT. AlphaLISA® anti-Mouse Acceptor beads (Perkin Elmer) are added, followed by the primary antibody addition and 30 min incubation at RT. AlphaScreen® Streptavidin-conjugated donor beads (Perkin Elmer) are added. After 10-15 minute incubation at room temperature, Alphacounts are measured.

Application: Useful for the study of enzyme kinetics, screening inhibitors, and selectivity profiling.

Quality Assurance

Specific Activity



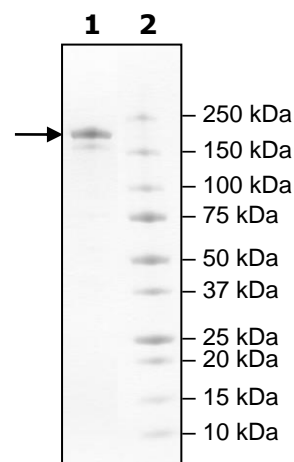
4-20% SDS-PAGE Coomassie staining

Lane 1:
2.2 µg JARID1C

Lane 2:
Protein Marker

MW: 181 kDa

Purity: ≥80%



OUR PRODUCTS ARE FOR RESEARCH USE ONLY. NOT FOR DIAGNOSTIC OR THERAPEUTIC USE.

To place your order, please contact us by Phone **1.858.829.3082** Fax **1.858.481.8694**

Or you can Email us at: info@bpsbioscience.com

Please visit our website at: www.bpsbioscience.com