



SZABO SCANDIC

Part of Europa Biosite

Produktinformation



Forschungsprodukte & Biochemikalien



Zellkultur & Verbrauchsmaterial



Diagnostik & molekulare Diagnostik



Laborgeräte & Service

Weitere Information auf den folgenden Seiten!
See the following pages for more information!



Lieferung & Zahlungsart

siehe unsere [Liefer- und Versandbedingungen](#)

Zuschläge

- Mindermengenzuschlag
- Trockeneiszuschlag
- Gefahrgutzuschlag
- Expressversand

SZABO-SCANDIC HandelsgmbH

Quellenstraße 110, A-1100 Wien

T. +43(0)1 489 3961-0

F. +43(0)1 489 3961-7

mail@szabo-scandic.com

www.szabo-scandic.com

[linkedin.com/company/szaboscandic](https://www.linkedin.com/company/szaboscandic) 

Data Sheet

JMJD2A (KDM4A)

Human, recombinant, N-terminal His-tag

Catalog #: 50123

Lot #: 141216

Conc.: 2.10 mg/ml

Formulated in: 40 mM Tris-HCl, pH 8.0, 110 mM NaCl, 2.2 mM KCl, 160 mM imidazole, and 20% glycerol.

Stability: At least 6 months at -80°C . Avoid freeze/thaw cycles. Storing diluted enzyme is not recommended, if necessary, use carrier protein (BSA 0.1 – 0.5%).

References:

- Zhang, D., *et al.* (2005). *Mol. Cell Biol.* **25(15)**: 6404-6414.
- Gray SG, *et al.* (2005). *J. Biol. Chem.* **280 (31)**: 28507–18.

Description: Human JMJD2A, also known as JHDM3A and KDM4A (GenBank Accession No. NM_014663) (amino-acids 1-350) with N-terminal His-tag, MW=42 kDa, expressed in an *E. coli* expression system.

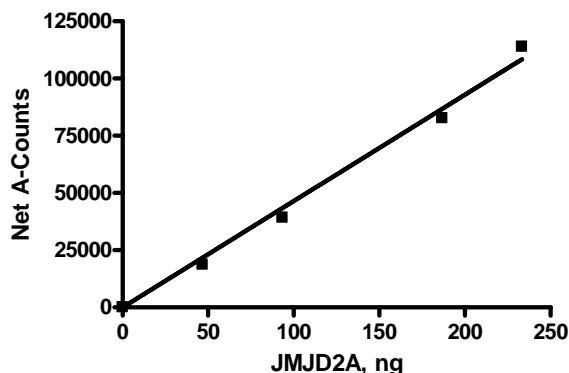
Specific Activity: ≥ 0.084 pmol/min/ μg

Assay conditions: 10 μl reaction mix containing assay buffer with 20 mM HEPES (pH 7.4), 150 mM NaCl, 500 μM α -ketoglutarate, 25 μM iron, 2 mM ascorbic acid, 0.01% Tween-20, 0.5 μM biotinylated peptide substrate, and JMJD2A (100 – 400 ng) added to the wells. Add antibody against demethylated K9 peptide. Incubate for 30 min, then Streptavidin-conjugated secondary antibody followed by Alpha Screening detection.

Application: Useful for the study of enzyme kinetics, screening inhibitors, and selectivity profiling.

Quality Assurance

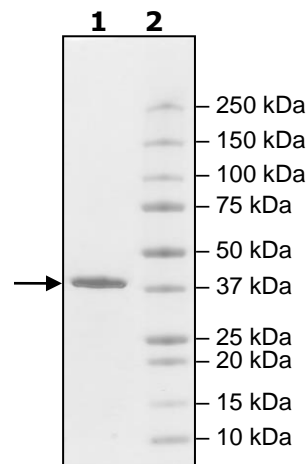
Specific Activity



**4-20% SDS-PAGE
Coomassie staining**

Lane 1:
2.3 μg JMJD2A
Lane 2:
Protein Marker

MW: 42 kDa
Purity: $\geq 90\%$



OUR PRODUCTS ARE FOR RESEARCH USE ONLY. NOT FOR DIAGNOSTIC OR THERAPEUTIC USE.

To place your order, please contact us by Phone **1.858.829.3082** Fax **1.858.259.5734**

Or you can Email us at: info@bpsbioscience.com

Please visit our website at: www.bpsbioscience.com



6042 Cornerstone Court West, Suite B
San Diego, CA 92121
Tel: 1.858.829.3082
Fax: 1.858.481.8694
Email: info@bpsbioscience.com

Sequence

MHHHHHMASESETLNPSARIMTFYPTMEEFRNFSRYIAYIESQGAHRAGLAKVVPPK
EWKPRASYDDIDDLVIPAPIQQLVTGQSGGLFTQYNIQKKAMTVREFRKIANSKYCTP
RYSEFEELERKYWKNLTFNPPYIYGADVNGTLYEKHVDEWNIGRLRTILDLVEKESGITI
EGVNTPLYFGMWKTSFAWHTEDMDLYSINYLHFGEPKSWYSVPPEHGKRLERLAK
GFFPGSAQSCEAFLRHKMTLISPLMLKKGIPFDKVTQEAGEFMITFPYGYHAGFNHG
FNCAESTNFATRRWIEYGKQAVLCSCRKDMVKISMDVFVRKFQPERYKLWKAGKDN
TVIDHTLPTPEA

Red: His tag

Black: JMJD2A (a.a. 1-350)

OUR PRODUCTS ARE FOR RESEARCH USE ONLY. NOT FOR DIAGNOSTIC OR THERAPEUTIC USE.

To place your order, please contact us by Phone **1.858.829.3082** Fax **1.858.259.5734**
Or you can Email us at: info@bpsbioscience.com
Please visit our website at: www.bpsbioscience.com