



SZABO SCANDIC

Part of Europa Biosite

Produktinformation



Forschungsprodukte & Biochemikalien



Zellkultur & Verbrauchsmaterial



Diagnostik & molekulare Diagnostik



Laborgeräte & Service

Weitere Information auf den folgenden Seiten!
See the following pages for more information!



Lieferung & Zahlungsart

siehe unsere [Liefer- und Versandbedingungen](#)

Zuschläge

- Mindermengenzuschlag
- Trockeneiszuschlag
- Gefahrgutzuschlag
- Expressversand

SZABO-SCANDIC HandelsgmbH

Quellenstraße 110, A-1100 Wien

T. +43(0)1 489 3961-0

F. +43(0)1 489 3961-7

mail@szabo-scandic.com

www.szabo-scandic.com

[linkedin.com/company/szaboscandic](https://www.linkedin.com/company/szaboscandic) 

Data Sheet

LSD2 (KDM1B), GST-Tev-Tag

Human, Recombinant, N-terminal GST-Tev-Tag
Catalog #: 50124
Lot #: 170207-2 **Conc:** 0.17 mg/ml

Formulated in: 40 mM Tris-HCl, pH 8.0, 110 mM NaCl, 2.2 mM KCl, 0.04% Tween20, 20% glycerol, and 1.6 mM glutathione

Stability: At least 6 months at -80°C . Avoid freeze/thaw cycles. Storing diluted enzyme is not recommended, if necessary, use carrier protein (BSA 0.1 – 0.5%).

References:

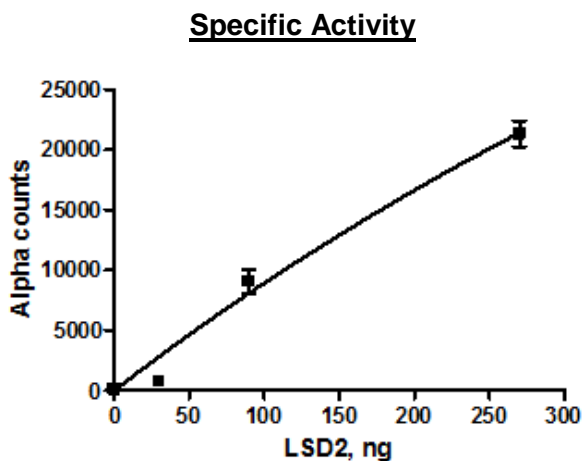
1. Binda, C., *et al.*, *Journal of American Chemical Society*. 2010; **132(19)**: 6827-6833.
2. Welte, M., *et al.*, *Cell Press*. 2005; **15(14)**: 1266-1275.

Description: Human LSD2 protein, also known as KDM1B, GenBank Accession No. NM_153042, a.a. 2-822 with N-terminal GST-Tev-Tag. MW = 121 kDa, expressed in Sf9 cells via a baculovirus expression system.

Assay Conditions: 10 μL of reaction mixture contains 50 mM Tris, pH 8.8, 50 mM NaCl, 0.01% Tween-20, 0.5 μM biotinylated peptide substrate, and various amount of LSD2. The reactions were incubated at room temperature for one hour with slow shaking. After the reaction, 10 μL of primary antibody (1:800 dilution) and anti-mouse acceptor beads (1:500 dilution) was added into the wells and the reactions were incubated for 30 min. Then 10 μL of Streptavidin-conjugated donor beads (1:125 dilution) was added into the wells. The reactions were incubated for additional 30 min at room temperature followed by Alpha screening detection.

Application: Useful for the study of enzyme kinetics, screening inhibitors, and selectivity profiling.

Quality Assurance



**4-20% SDS-PAGE
Coomassie staining**

Lane 1:
KDM1B

Lane 2:
Protein Marker

MW: 121 kDa
Purity: $\geq 90\%$

