



SZABO SCANDIC

Part of Europa Biosite

Produktinformation



Forschungsprodukte & Biochemikalien



Zellkultur & Verbrauchsmaterial



Diagnostik & molekulare Diagnostik



Laborgeräte & Service

Weitere Information auf den folgenden Seiten!
See the following pages for more information!



Lieferung & Zahlungsart

siehe unsere [Liefer- und Versandbedingungen](#)

Zuschläge

- Mindermengenzuschlag
- Trockeneiszuschlag
- Gefahrgutzuschlag
- Expressversand

SZABO-SCANDIC HandelsgmbH

Quellenstraße 110, A-1100 Wien

T. +43(0)1 489 3961-0

F. +43(0)1 489 3961-7

mail@szabo-scandic.com

www.szabo-scandic.com

[linkedin.com/company/szaboscandic](https://www.linkedin.com/company/szaboscandic) 

Data Sheet

LC20

Mouse, recombinant, N-terminal GST-tag

Catalog #: 50127

Lot#: 131113

Conc.: 0.2 mg/ml

Formulated in: 50 mM Tris-HCl, pH 7.5,
 150 mM NaCl, 10 mM glutathione, 0.1 mM
 EDTA, 0.1 mM PMSF, and 25% glycerol.

Stability: >12 months at -70°C

References:

1. Wagner, P D. *et al.*, *J. Biol. Chem.* 1986
 Jun 15;**261(17)**:7778-83.
2. Trybus, K M. *et al.*, *J. Biol. Chem.* 1988
 Nov 5;**263(31)**:16485-92.

Description:

Mouse LC20, also known as MYL9 and MRLC1 (GenBank Accession No. BC_055439), full length, with N-terminal GST-tag, MW=45 kDa, expressed in an *E. coli* cell expression system.

Application:

Useful for protein binding studies, as a substrate for MLCK and related kinases, and as an immunogen.

Quality Assurance

SDS-PAGE
Coomassie staining

Lane 1:

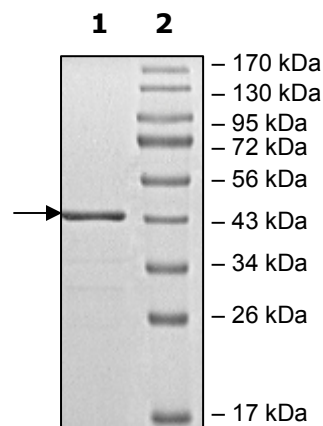
LC20

Lane 2:

Protein Marker

MW: 45 kDa

Purity: ≥95%



OUR PRODUCTS ARE FOR RESEARCH USE ONLY. NOT FOR DIAGNOSTIC OR THERAPEUTIC USE.

To place your order, please contact us by Phone **1.858.829.3082** Fax **1.858.481.8694**

Or you can Email us at: info@bpsbioscience.com

Please visit our website at: www.bpsbioscience.com