



SZABO SCANDIC

Part of Europa Biosite

Produktinformation



Forschungsprodukte & Biochemikalien



Zellkultur & Verbrauchsmaterial



Diagnostik & molekulare Diagnostik



Laborgeräte & Service

Weitere Information auf den folgenden Seiten!
See the following pages for more information!



Lieferung & Zahlungsart

siehe unsere [Liefer- und Versandbedingungen](#)

Zuschläge

- Mindermengenzuschlag
- Trockeneiszuschlag
- Gefahrgutzuschlag
- Expressversand

SZABO-SCANDIC HandelsgmbH

Quellenstraße 110, A-1100 Wien

T. +43(0)1 489 3961-0

F. +43(0)1 489 3961-7

mail@szabo-scandic.com

www.szabo-scandic.com

[linkedin.com/company/szaboscandic](https://www.linkedin.com/company/szaboscandic) 

Data Sheet

PHF8 (KDM7B), Full-length, FLAG-tag

Human, recombinant, N-terminal FLAG-tag
Catalog #: 50132
Lot #: 150223-1 **Conc.:** 0.10 mg/ml

Formulated in: 40 mM Tris-HCl, pH 8.0, 110 mM NaCl, 2.2 mM KCl, 0.04% Tween-20, 20% glycerol, 80 µg/ml FLAG peptide

Stability: At least 6 months at -80°C. Avoid freeze/thaw cycles. Storing diluted enzyme is not recommended, if necessary, use carrier protein (BSA 0.1 – 0.5%).

References:

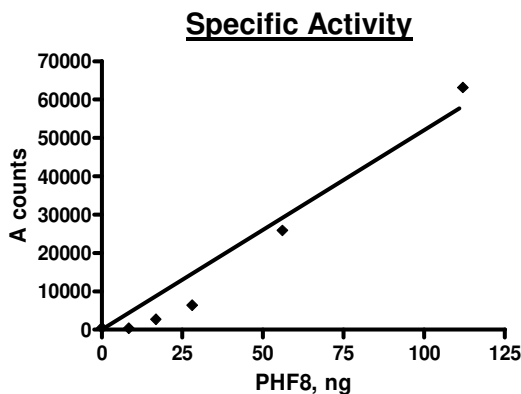
1. Liu W. *et al.*, *Nature*. 2010; **466(7305)**: 508-512.
2. Zhu Z. *et al.*, *Cell Res*. 2010; **20(7)**: 794-801.

Description: Human PHF8 also known as KDM7B (lysine-specific demethylase 7B), JHDM1F, and KIAA1111, GenBank Accession No. NM_001184896, full-length (a.a. 2-1060(end)), with N-terminal FLAG-tag, MW=120 kDa, expressed in a Baculovirus-infected Sf9 cell expression system.

Specific Activity: 0.013 pmol/min/µg
 Assay conditions: PHF8 enzyme is incubated with biotinylated histone H3 peptide substrate in HEPES-based JMJ buffer in a 10 µl reaction for 1 hr. at RT. Add 5 µl of AlphaLISA™ anti-Rabbit Acceptor beads (Perkin Elmer, 20 µg/ml), followed by addition of 5 µl of antibody and 30 min. incubation at RT. Add 10 µl of AlphaScreen Streptavidin-conjugated donor beads (Perkin Elmer, 40 µg/ml). Alpha counts are measured after 10 min. RT incubation.

Application: Useful for the study of enzyme kinetics, screening inhibitors, and selectivity profiling.

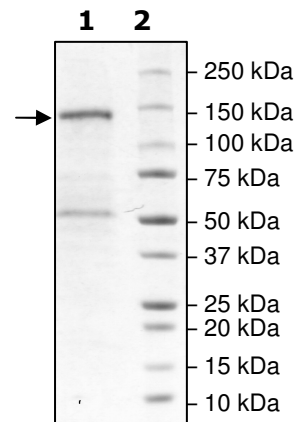
Quality Assurance



**4-20% SDS-PAGE
Coomassie staining**

Lane 1:
2 µg PHF8 full length
Lane 2:
Protein Marker

Purity: ≥60%
MW: 120 kDa



OUR PRODUCTS ARE FOR RESEARCH USE ONLY. NOT FOR DIAGNOSTIC OR THERAPEUTIC USE.
 To place your order, please contact us by Phone **1.858.829.3082** Fax **1.858.481.8694**
 Or you can Email us at: info@bpsbioscience.com
 Please visit our website at: www.bpsbioscience.com