



# SZABO SCANDIC

Part of Europa Biosite

## Produktinformation



Forschungsprodukte & Biochemikalien



Zellkultur & Verbrauchsmaterial



Diagnostik & molekulare Diagnostik



Laborgeräte & Service

Weitere Information auf den folgenden Seiten!  
See the following pages for more information!



### Lieferung & Zahlungsart

siehe unsere [Liefer- und Versandbedingungen](#)

### Zuschläge

- Mindermengenzuschlag
- Trockeneiszuschlag
- Gefahrgutzuschlag
- Expressversand

### SZABO-SCANDIC HandelsgmbH

Quellenstraße 110, A-1100 Wien

T. +43(0)1 489 3961-0

F. +43(0)1 489 3961-7

[mail@szabo-scandic.com](mailto:mail@szabo-scandic.com)

[www.szabo-scandic.com](http://www.szabo-scandic.com)

[linkedin.com/company/szaboscandic](https://www.linkedin.com/company/szaboscandic) 

## Data Sheet

### JARID1A (KDM5A, RBBP2), His-tag

Human, Recombinant with N-terminal His- tag,  
 C-terminal FLAG-tag

**Catalog #:** 50155

**Lot #:** 170217-1

**Conc.:** 0.38 mg/ml

**Formulated in:** 40 mM Tris-HCl, 2.2 mM KCl,  
 0.04% Tween-20, 100µg/mL and 20% glycerol.

**Stability:** At least 6 months at -80°C. Avoid  
 freeze/thaw cycles. Storing diluted enzyme is not  
 recommended, if necessary, use carrier protein  
 (BSA 0.1 – 0.5%).

**References:**

1. Roesch, A., *et al.* (2005). *Mod Pathol.*  
**18(9):**1249-57.
2. Zhou X., *et al.* (2010). *Cancer Res.*  
**70(10):**4214-21
3. van Zutven LJ, *et al.* (2006). *Genes*  
*Chromosomes Cancer* **45(5):**437-46.

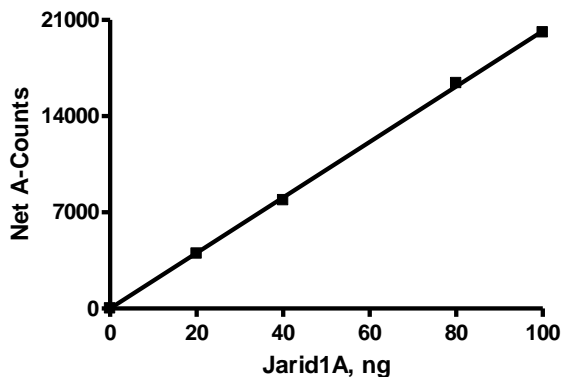
**Description:** Human JARID1A, also  
 known as KDM5A and RBBP2, GenBank  
 Accession No. NM\_001042603, a.a. 2-  
 1090 with N-terminal His-tag and C-  
 terminal FLAG-tag, MW= 128 kDa,  
 expressed in Sf9 cells via a baculovirus  
 expression system.

**Specific Activity:** ≥0.035 pmol/min/µg  
 Assay conditions: 10µl reaction mix  
 containing assay buffer with 20 mM  
 HEPES (pH 7.4), 50 mM NaCl, 1mM  
 TCEP, 500 µM α-ketoglutarate, 25 µM  
 iron, 2mM ascorbic acid, 0.01% Tween-20,  
 0.5 µM biotinylated peptide substrate, and  
 Jarid1A (20 – 100ng) added to the wells.  
 Add antibody against di-methylated K4  
 peptide. Incubate for 30 min, then  
 Streptavidin-conjugated secondary  
 antibody followed by Alpha Screening  
 detection.

**Application:** Useful for the study of  
 enzyme kinetics, screening inhibitors, and  
 selectivity profiling.

## Quality Assurance

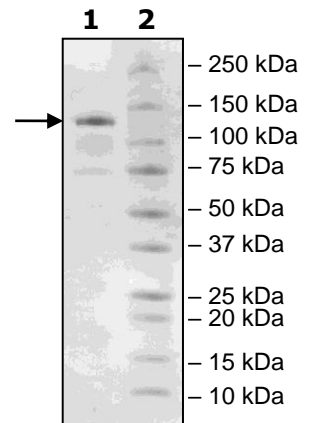
### Specific Activity



### 4-20% SDS-PAGE Coomassie staining

**Lane 1:**  
 2 µg Jarid1A  
**Lane 2:**  
 Protein Marker

**MW:** 128 kDa  
**Purity:** ≥74%



OUR PRODUCTS ARE FOR RESEARCH USE ONLY. NOT FOR DIAGNOSTIC OR THERAPEUTIC USE.

To place your order, please contact us by Phone **1.858.829.3082** Fax **1.858.481.8694**

Or you can Email us at: [info@bpsbioscience.com](mailto:info@bpsbioscience.com)

Please visit our website at: [www.bpsbioscience.com](http://www.bpsbioscience.com)



6044 Cornerstone Court West, Suite E  
San Diego, CA 92121  
Tel: 1.858.829.3082  
Fax: 1.858.481.8694  
Email: [info@bpsbioscience.com](mailto:info@bpsbioscience.com)

**Sequence:**

MHHHHHGLNDI**FEAQKIEWHE**AGVGGGYAAEFVPPPECPVFEPSWEEFTDPLS  
FIGRIRPLAECTGICKIRPPKDWQPPFACEVKSFRFTPRVQRLNELEAMTRVRLD  
FLDQLAKFWELQGSTLKI PVVERKILDLYALSKIVASKGGFEMVTKEKKWSKVG  
RLGYLPGKGTGSLKSHYERILYPYELFQSGVSLMGVQMPNLDLKEKVEPEVLST  
DTQTSPEPGTRMNILPKRTRRVKTQSESGDVS RNTELKKLQIFGAGPKVVG LAMG  
TKDKEDEVTRRRKVTNRSDAFNMQMRQRKGTLSVNFVDLYVCMFCGRGNNE DKLL  
LCDGCDDSYHTFCLIPPLPDV PKGDWRCPKCVAEECSKPREAFGF EQAVREYTLQ  
SFGEMADNFKSDYFNMPVHMVPT ELVEKEFWRLVSSIEEDVIVEYGADISSKDFG  
SGFPVKDGRRKILPEEEYALSGWNLNMPVLEQSVLAHINVDISGMKVPWLYVG  
MCFSSFCWHIEDHWSYSINYLHWGEPK TWYGVPSHAAEQLEEV MRELAPELFESQ  
PDL LHQLVTIMNPNVLM EHGVPVYRTNQCAGEFVVTFPRAYHSGFNQGYNFAEAV  
NFCTADWLP IGRQCVNHYRRLRRHCVFSHEELIFKMAADPECLDVGLAAMVCKEL  
TLMTEETRLRESVVQMGVLMSEEEVFELVPDDERQCSACRTTCFLSALTCS CNP  
ERLVCLYHPTDLCPCPMQKCLRYRYPLEDLPSLLYGVKVRAQSYDTWVSRVTEA  
LSANFNHKKDLIELRVMLEDAEDRKY PENDINGLFRKLRDAVKEAETCASVAQLLSK  
KQKHRQSPDSGRTRTKLTVEELKAFVQQLFSLPCVISOARQVKNLLDDVEEFHER  
AQEAMMDETPDSSKLQMLIDMGSSLYVELPEL PRLKQELQQARWLDEVRLT LSDP  
QQVTLDMKLLIDSGVGLAPHHAVEKAMAELQELLTVSERWEEKAKVCLQARPRH  
SVASLESIVNEAKNIPAFLPNVLSLKEALQKAREWTAKVEAIQSGSNYAYLEQLE  
SLSAKGRPI PVRLEALPQVESQVAAARAWRERTGR TFLKKNSSHTLLQVLSPRTD  
IGVYGS GKNRR**DYKDDDDK**

**Blue:** His-Avi-tag

**Red:** FLAG-tag

**Black:** JARID1A (a.a. 2-1090)

OUR PRODUCTS ARE FOR RESEARCH USE ONLY. NOT FOR DIAGNOSTIC OR THERAPEUTIC USE.

To place your order, please contact us by Phone **1.858.829.3082** Fax **1.858.481.8694**

Or you can Email us at: [info@bpsbioscience.com](mailto:info@bpsbioscience.com)

Please visit our website at: [www.bpsbioscience.com](http://www.bpsbioscience.com)