



SZABO SCANDIC

Part of Europa Biosite

Produktinformation



Forschungsprodukte & Biochemikalien



Zellkultur & Verbrauchsmaterial



Diagnostik & molekulare Diagnostik



Laborgeräte & Service

Weitere Information auf den folgenden Seiten!
See the following pages for more information!



Lieferung & Zahlungsart

siehe unsere [Liefer- und Versandbedingungen](#)

Zuschläge

- Mindermengenzuschlag
- Trockeneiszuschlag
- Gefahrgutzuschlag
- Expressversand

SZABO-SCANDIC HandelsgmbH

Quellenstraße 110, A-1100 Wien

T. +43(0)1 489 3961-0

F. +43(0)1 489 3961-7

mail@szabo-scandic.com

www.szabo-scandic.com

[linkedin.com/company/szaboscandic](https://www.linkedin.com/company/szaboscandic) 

Data Sheet

TET2, FLAG-Tag, His-Tag (catalytic domain)

Human, Recombinant, N-terminal FLAG-tag,
 C terminal His-tag

Catalog #: 50162

Lot #: 171205-2

Conc: 0.81 mg/ml

Formulated in: 40 mM Tris-HCl, pH 8.0, 110 mM NaCl, 2.2 mM KCl, 0.04% Tween20, 20% glycerol, 0.2mM TCEP

Stability: At least 6 months at -80°C . Avoid freeze/thaw cycles.

References:

1. Myunggon, K., *et al.*, *Nature*. 2013;**497**: 122-126.
2. Shinsuke, I, *et al.*, *Nature*. 2010; **466**: 1129-1133.

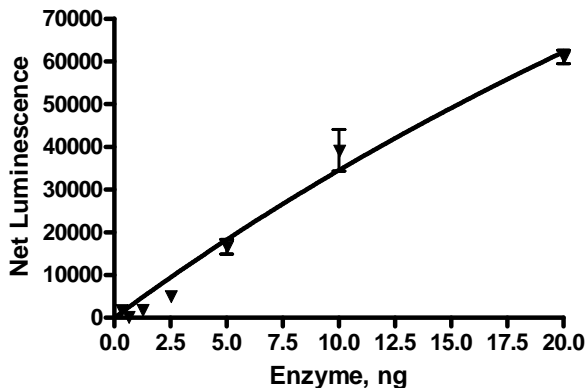
Description: Human Ten-eleven translocation 2 protein (TET2), methylcytosine dioxygenase TET2, GenBank Accession # NM_001127208, a.a. 1129-2002 (end) with N-terminal FLAG-tag, C-terminal His-tag. MW = 100 kDa, expressed in Sf9 cells via a baculovirus expression system.

Assay Description: Reaction done according to TET2 Chemiluminescent Assay Kit (Catalog #50652). TET2 Enzyme was tested from 0 ng/ μl -40 ng/ μl . Kit conditions are 10 ng/ μl .

Application: Useful for the study of enzyme kinetics, screening inhibitors, and selectivity profiling.

Quality Assurance

Specific Activity



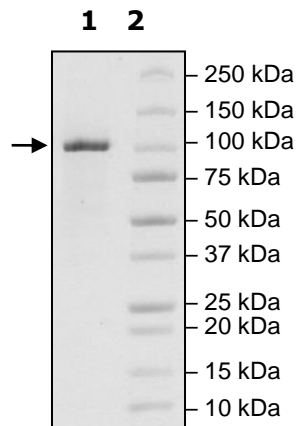
4-20% SDS-PAGE
Coomassie staining

Lane 1:
 TET2(1129-e)

Lane 2:
 Protein Marker

MW: 100 kDa

Purity: $\geq 90\%$



OUR PRODUCTS ARE FOR RESEARCH USE ONLY. NOT FOR DIAGNOSTIC OR THERAPEUTIC USE.

To place your order, please contact us by Phone **1.858.202.1401** Fax **1.858.481.8694**

Or you can Email us at: info@bpsbioscience.com

Please visit our website at: www.bpsbioscience.com