



SZABO SCANDIC

Part of Europa Biosite

Produktinformation



Forschungsprodukte & Biochemikalien



Zellkultur & Verbrauchsmaterial



Diagnostik & molekulare Diagnostik



Laborgeräte & Service

Weitere Information auf den folgenden Seiten!
See the following pages for more information!



Lieferung & Zahlungsart

siehe unsere [Liefer- und Versandbedingungen](#)

Zuschläge

- Mindermengenzuschlag
- Trockeneiszuschlag
- Gefahrgutzuschlag
- Expressversand

SZABO-SCANDIC HandelsgmbH

Quellenstraße 110, A-1100 Wien

T. +43(0)1 489 3961-0

F. +43(0)1 489 3961-7

mail@szabo-scandic.com

www.szabo-scandic.com

[linkedin.com/company/szaboscandic](https://www.linkedin.com/company/szaboscandic) 

Data Sheet

TET3, FLAG-Tag, His-Tag

Human, Recombinant, N-terminal FLAG-tag,
C-terminal His-tag

Catalog #: 50163

Lot #: 180525-1

Conc: 0.16 mg/ml

Formulated in: 40 mM Tris-HCl, pH 8.0, 110 mM NaCl, 2.2 mM KCl, 0.04% Tween20, 20% glycerol, 3mM DTT, 100 µg/ml FLAG peptide

Stability: At least 6 months at -80°C. Avoid freeze/thaw cycles.

Description: Human Ten-eleven translocation 3 protein (TET3), also known as methylcytosine dioxygenase TET3, GenBank Accession No.: NM_001287491, a.a. 824-1795(end) with N-terminal FLAG-tag and C-terminal His-tag, expressed in Sf9 cells via a baculovirus expression system. MW = 108 kDa.

References:

1. Tian-Peng, G., *et al.*, *Nature*. 2011;**477**: 606-610.
2. Abdel-Wahab, O., *et al.*, *Blood*. 2009; **114**: 144-147.

Quality Assurance

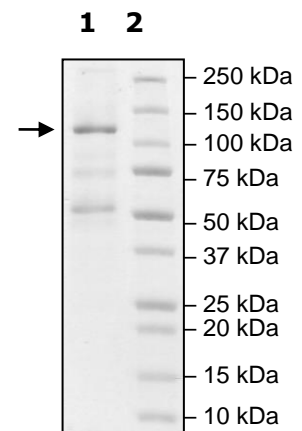
4-20% SDS-PAGE Coomassie staining

Lane 1:
TET3(824-e)

Lane 2:
Protein Marker

MW: 108 kDa

Purity: ≥50%



OUR PRODUCTS ARE FOR RESEARCH USE ONLY. NOT FOR DIAGNOSTIC OR THERAPEUTIC USE.

To place your order, please contact us by Phone **1.858.202.1401** Fax **1.858.481.8694**

Or you can Email us at: info@bpsbioscience.com

Please visit our website at: www.bpsbioscience.com