



# SZABO SCANDIC

Part of Europa Biosite

## Produktinformation



Forschungsprodukte & Biochemikalien



Zellkultur & Verbrauchsmaterial



Diagnostik & molekulare Diagnostik



Laborgeräte & Service

Weitere Information auf den folgenden Seiten!  
See the following pages for more information!



### Lieferung & Zahlungsart

siehe unsere [Liefer- und Versandbedingungen](#)

### Zuschläge

- Mindermengenzuschlag
- Trockeneiszuschlag
- Gefahrgutzuschlag
- Expressversand

### SZABO-SCANDIC HandelsgmbH

Quellenstraße 110, A-1100 Wien

T. +43(0)1 489 3961-0

F. +43(0)1 489 3961-7

[mail@szabo-scandic.com](mailto:mail@szabo-scandic.com)

[www.szabo-scandic.com](http://www.szabo-scandic.com)

[linkedin.com/company/szaboscandic](https://www.linkedin.com/company/szaboscandic) 

## Data Sheet

### Galactokinase

Human, recombinant, N-terminal His tag  
**Catalog #:** 50275  
 Lot# 121102-E2      Conc. 0.28 mg/ml

**Formulated in:** 40 mM Tris-HCl, pH 8.0,  
 110 mM NaCl, 2.2 mM KCl, 40 mM  
 imidazole, 3 mM DTT, and 20% glycerol.

**Stability:** >12 months at -80 °C

**References:**

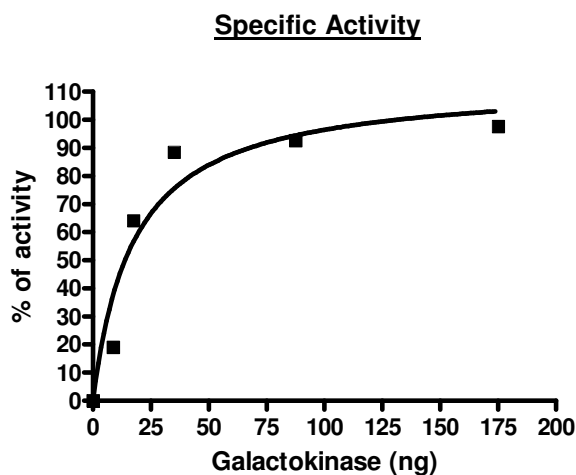
1. Thoden J.B. et al., *J. Biol. Chem.* **280** (10), 9662-9670 (2005).
2. Holden H.M. et al., *Cell. Mol. Life Sci.* **61** (19-20), 2471-2484 (2004).

**Description:** Human galactokinase (GenBank Accession No. NM\_000154), full length with N-terminal His tag, MW=42 kDa, expressed in an *E. coli* expression system.

**Specific activity:** 102 pmole/min/μg  
 A 50 μl Galactokinase reaction is conducted in a buffer containing 20 mM Tris (pH 7.4), 5 mM MgCl<sub>2</sub>, 50 mM NaCl, 5 μM ATP, 1 mM DTT and 1 mM substrate D-Galactose at room temperature for 1 hour. ATP reduction is detected using Kinase-Glo<sup>®</sup> Luminescent Kinase Assay Platform.

**Application:** Useful for the study of enzyme kinetics, screening inhibitors, and selectivity profiling.

### Quality Assurance



**4-20% SDS-PAGE  
 Coomassie staining**

**Lane 1:**  
 2 μg Galactokinase

**Lane 2:**  
 Protein Marker

**MW:** 42 kDa  
**Purity:** ≥72%

