



SZABO SCANDIC

Part of Europa Biosite

Produktinformation



Forschungsprodukte & Biochemikalien



Zellkultur & Verbrauchsmaterial



Diagnostik & molekulare Diagnostik



Laborgeräte & Service

Weitere Information auf den folgenden Seiten!
See the following pages for more information!



Lieferung & Zahlungsart

siehe unsere [Liefer- und Versandbedingungen](#)

Zuschläge

- Mindermengenzuschlag
- Trockeneiszuschlag
- Gefahrgutzuschlag
- Expressversand

SZABO-SCANDIC HandelsgmbH

Quellenstraße 110, A-1100 Wien

T. +43(0)1 489 3961-0

F. +43(0)1 489 3961-7

mail@szabo-scandic.com

www.szabo-scandic.com

[linkedin.com/company/szaboscandic](https://www.linkedin.com/company/szaboscandic) 

Data Sheet

AEBP2, His-tag

Human, recombinant, N-terminal His-tag

Catalog #: 50281

Lot #: 150210-Q **Conc.:** 0.34 mg/ml

Formulated in: 40 mM Tris-HCl pH 8.0, 110 mM NaCl, 2.2 mM KCl and 20% glycerol.

Stability: At least 6 months at -80°C . Avoid freeze/thaw cycles. Storing diluted protein is not recommended, if necessary, use carrier protein (BSA 0.1 – 0.5%).

References:

1. Kim, H., *et al.*, *PLoS One*. 2011; **6(9)**:e25174.
2. Cao., R., *et al.*, *Mol. Cell*. 2004 Jul 2; **15(1)**: 57-67.

Description:

Human AE binding protein 2 (AEBP2), GenBank Accession No. NM_153207, a.a. 2-503 (end) with N-terminal His-tag, MW= 53.6 kDa, expressed in Sf9 cells via a baculovirus expression system. *Protein runs aberrantly in SDS-PAGE gels, and has been confirmed by Western blotting.

Application:

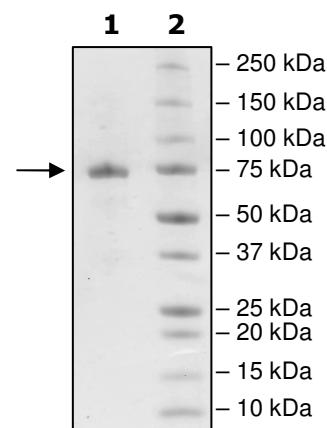
Useful for the study of enzyme kinetics, screening inhibitors, and selectivity profiling.

Quality Assurance

**4-20% SDS-PAGE
Coomassie staining**

Lane 1:
2 μg AEBP2
Lane 2:
Protein Marker

MW: 53.6 kDa
Purity: $\geq 90\%$



OUR PRODUCTS ARE FOR RESEARCH USE ONLY. NOT FOR DIAGNOSTIC OR THERAPEUTIC USE.

To place your order, please contact us by Phone **1.858.829.3082** Fax **1.858.481.8694**

Or you can Email us at: info@bpsbioscience.com

Please visit our website at: www.bpsbioscience.com



6044 Cornerstone Court West, Suite E
San Diego, CA 92121
Tel: 1.858.829.3082
Fax: 1.858.481.8694
Email: info@bpsbioscience.com

Protein Sequence:

MHHHHHAAAITDMADLEELSRLSPLPPGSPGSAARGRAEPPPEEEEEEEEEEEA
EAVAALLNNGSGGGGGGGGGGGVGGGEAETMSEPSPEASQAGEDEDEEEDDEE
EDESSESSGGGEEESSAESLVGSSGGSSSDETRSLSPGAASSSSGDGDGKEGLEEK
GPRGSQGGGGGGSSSSSVSSGGDEGYGTGGGGSSATSGGRRGSLEMSSDGEPL
SRMSEDSISSTIMDVSTISSGRSTPAMMNGQGSTTSSSKNIAYNCCWDQCACFN
SSPDLADHIRSIHVDGQRGGVFVCLWKGCKVYNTPTSQSWLQRHMLTHSGDKPKF
CVVGGCNASFASQGGGLARHVPTFHSQQNSSKVSSQPKAKEESPSKAGMNRKRLK
NKRRLSLPRPHDFDAQTLDAIRHRAICFNLSAHIESLGKGHSVVFHSTVIKRKEDSG
KIKLLLHWMPEDILPDVWVNESERHQLKTKVVHLSKLPKDTALLDPNIYRTMPQKRL
KR

OUR PRODUCTS ARE FOR RESEARCH USE ONLY. NOT FOR DIAGNOSTIC OR THERAPEUTIC USE.
To place your order, please contact us by Phone **1.858.829.3082** Fax **1.858.481.8694**
Or you can Email us at: info@bpsbioscience.com
Please visit our website at: www.bpsbioscience.com